



# Rocky Trails



April 2017

Volume 11 Issue 3



The Newsletter of the Columbia Gem and Mineral Society

## EDITOR'S MESSAGE

Dear Members,

I hope everyone is enjoying the change in the seasons and has had a chance to get outdoors. I would like to follow up on our President's message from last month that the club has a wonderful lapidary workshop that has excellent, high quality machines and tools that are available for use by our members. There is everything you need to make beautiful cabochons, cut geodes, or cut slabs for all your crafting projects. We have an 18" slab cutter, saws for small jobs, grinding and polishing wheels for capping, and other lapidary equipment. In addition, the club has a library housed at the shop that can inform members on lapidary techniques and provide creative ideas. Give Gary Hert a call to make an appointment to meet him at the shop and he will be happy to instruct you on the safe operation and use of all the equipment. I encourage members to take advantage of the the opportunity enjoy the shop. It is a lot of fun and the rewards can be astonishing!

Don't forget the club picnic on April 30<sup>th</sup> from 1:00 pm to 5:00 pm at the workshop. We always have delicious food and great fellowship. I look forward to seeing everyone there.

Until next time,  
*Ron Ahle*



## **NEXT MEETING** **April 17, 2017**

### **PROGRAM:**

Mana Hewitt will talk about jewelry making techniques and her jewelry.

### **REFRESHMENTS**

Gary & Pat Hert

### **DOOR PRIZE**

Derek Hillman

## **ARCHAEOLOGY DAY**

### AUGUSTA MUSEUM of HISTORY & AUGUSTA ARCHAEOLOGICAL SOCIETY Present Archaeology Day

Saturday, May 6, 2017....10:00 AM - 4:00 PM  
free admission at the 1797 Ezekiel Harris House  
1822 Broad Street

VISIT [www.augustamuseum.org](http://www.augustamuseum.org) for more information or call the Augusta Museum of History 706-722-8454, or the Augusta Archaeological Society 706-564-5868 / 706-210-0776

Archaeologists will be on hand to identify and classify prehistoric and historic artifacts • Paleo-Indian projectile points will be formally recorded • Artifacts from local sites on display, including artifacts from the Ezekiel Harris House • Flint knapping and primitive weapons demonstrations • Ezekiel Harris House Tours

Club meetings are at The McKissick Museum at USC. Parking is available beside the museum where Bull St. runs into Pendleton St. See map on page 10. If you are unable to use the front steps of the McKissick Museum, there is an elevator on the ground floor down the hall from the parking lot. If you need to use the elevator call 803-261-9317 to have the door on the street level by the parking lot opened.

### ABOUT THE PROGRAM

Mana's work has been exhibited regionally, nationally, and overseas. Her works are included in numerous collections including the SCANA Corporation, First Citizens Bank Headquarters, the Columbia Museum of Art, the South Carolina State Museum, the Lieberman Collection NY, the Federal Reserve Bank, NC, Palmetto-Richland Children's Hospital, and the Tree of Life Temple, Columbia, SC.

Mana Hewitt was born into a nomadic military family traveling the US and Europe until finally landing in South Carolina. With a mother that was an art teacher she was drawn to art from her earliest childhood. She studied at the University of SC where she earned her BA and MFA. Her career has been primarily in education having been a college instructor at Columbia College, and the University of South Carolina. Currently she is a Senior Instructor and Gallery Director for McMaster Gallery in the Department of Art at USC.

STATEMENT...I have always been compelled to make things, to experiment with new processes and investigate new ideas. This has led to an ever-expanding number of media that I have employed. My works in metal have led to an interest in jewelry as narrative sculpture. These works explore word play through imagery associated with the figure, technology, and the environment. Composed of multiply layered etched sterling, cast figures, found objects and resin they set the stage for the wearers interpretation of a tale. My goal is to create jewelry items that are aesthetically pleasing and conceptually interesting.

*From her website with Mana Hewitt's permission*



### Field Trip to Graves Mountain

April 28 – 30, 2017 Graves Mountain, Lincolnton, GA Rock Swap & Dig

Collecting Rutile, Kyanite, Lazulite, Iridescent Hematite, Pyrophyllite, Pyrite, Ilmenite, Fuchsite, Barite, Sulfur, variscite, woodhouseite, crandallite, strengite, phosphosiderite, cacoxenite, blue quartz, quartz crystals, etc.

Friday April 28, 8AM to 6 PM

Saturday April 29, 8AM to 6PM

Sunday April 30, 8AM to 6PM

The caretaker in charge of Graves Mountain, Clarence Norman Jr., has announced plans to hold a three day dig and rock swap on the Mountain during April and October. He will have the mountain open to collecting from 8 am to 6 pm each day. All participants must stop at the welcome table in the Hospitality tent to sign a liability release and make a small contribution to defray the cost of opening the mountain and providing port-o-lets. There will be several golf cart type, four wheeled vehicles available to transport those participants who have trouble walking long distances. The dig will cease and everyone is expected to be off the mountain by around 6 pm each day. Participants will be allowed to park in a designated area on the mountain.

**Rock Swap and Hot Food/Drinks:** Junior will set aside an area in the upper parking lot for tables to be setup for daily rock swaps. Anyone who would like to setup a table(s), please contact Junior at the phone numbers listed below. Hot food cooked on the grill, cold drinks and chips will be available for purchase on the mountain during all three days of these events.

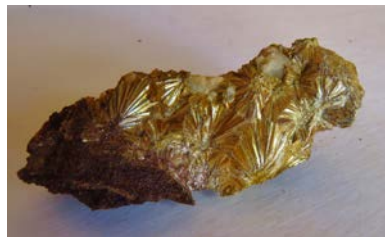
Contact Information:

Clarence Norman Jr. (Junior) - 706-359-1544 (his business) or 706-401-3173 (his cell)

#### **THESE DIGS ARE OPEN TO ALL**

**NO NEED TO SIGN-UP, JUST SHOW UP FOR ALL "ROCK SWAP AND DIGS"!**

Graves mountain is accessible and open for mineral collecting by colleges, universities, and gem and mineral societies. Groups as small as two INDIVIDUAL mineral collectors can now reserve the mountain!



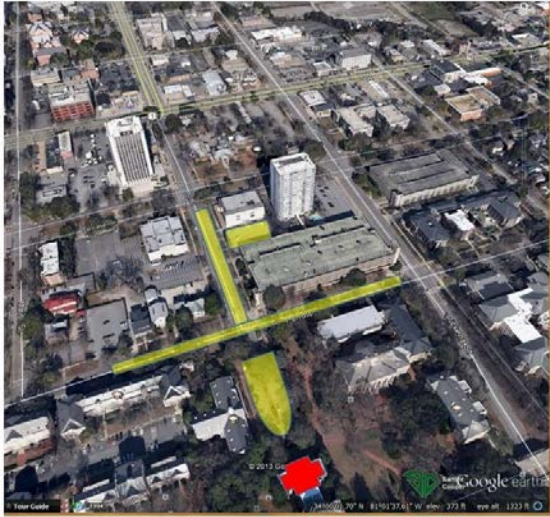
Golden pyrophyllite



Rutile



Lazulite



**Yellow shaded areas = suggested parking**      **McKissick Museum (in Red)**

### [McKissick Museum](#)

#### **McKissick Museum:**

[www.artsandsciences.sc.edu/mikissickmuseum](http://www.artsandsciences.sc.edu/mikissickmuseum); phone 803.777.7251; College of Arts and Sciences, University of South Carolina; 816 Bull Street, Columbia, SC 29208

**Natural Curiosity:** The University of South Carolina and the Evolution of Scientific Inquiry in the Natural World is an ongoing exhibit in the 3rd floor gallery. Humans possess a fascination with the natural world around them. From the 32,000-year-old cave paintings of horses in France to the giraffe stickers today's children paste into their activity books, we can see that humans are eager to see, touch, collect, and understand nature. Ongoing, 3<sup>rd</sup> floor gallery.

Chris CiCiMurri Curator of Natural Science. 803-777-2823; [cicimurri@sc.edu](mailto:cicimurri@sc.edu)

### [South Carolina State Museum](#)

Boeing Observatory Public Solar Observing Times:  
Mon. – Fri: 10 a.m. to 5 p.m....Saturday: 11 a.m. to 6 p.m....Sunday: 1 to 5 p.m....Sunset to 8 p.m. during Second Shift Tuesday each week.

**Meteorite Times Magazine** is an on-line bi-monthly magazine devoted to every area of meteorite interest. Readers will find it full of meteorite articles, images, and stories about the people of the meteorite community. It is brought to you by [The Meteorite Exchange, Inc.](#) Read and learn about meteorites through the eyes of meteorite collectors, hunters, dealers, and researchers, as they study, hunt for, photograph, and collect meteorites from around the world. Join us six times a year for new issues full of meteorite information, news, and photography. Back issues from the last 12 years are always available for further study also.

[www.scmuseum.org/](http://www.scmuseum.org/) 803-898-4921 301 Gervais Street Columbia, SC 29201

Meteor Showers

<http://www.amsmeteors.org>

#### **Lyrids**

Active from April 16th to April 25th Peak Night Apr. 21 - 22

The Lyrids are a medium strength shower that usually produces good rates for three nights centered on the maximum. These meteors also usually lack persistent trains but can produce fireballs. These meteors are best seen from the northern hemisphere where the radiant is high in the sky at dawn. Activity from this shower can be seen from the southern hemisphere, but at a lower rate.

Next major shower peak:

Lyrids on April 21-22nd night.

The moon will be 16% of full.

The Lyrids are a medium strength shower that usually produces good rates for three nights centered on the maximum. These meteors also usually lack persistent trains but can produce fireballs. These meteors are best seen from the northern hemisphere where the radiant is high in the sky at dawn.

**The Lyrids will be the major active meteor shower!**

**EXECUTIVE MEETING MINUTES****March, 2017 Board Meeting of Columbia Gem and Mineral Society, Inc.**

The Columbia Gem and Mineral Society met on the 4<sup>th</sup> Monday, February 27, 2017, at Grecian Gardens at 2312 Sunset Blvd., West Columbia, SC 29169. Members and officers present were Jimmy Armstrong, Berina Suphin, Jim Cobb, Dan Elswick, Sue Shrader, Ron Ahle, Angela Valvasori, Sharon Sterrett, and Susan Bloodworth. President Jimmy Armstrong called the meeting to order at 7:08.

**Committee and Officer Reports:** Jimmy Armstrong reminded everyone that the **Picnic** will be on April 30, 2017 at the workshop. On Membership, Susan Bloodworth reported that her computer was currently down but she would have it working soon and complete the updated club rooster. Sue Shrader reported that the April **Program** would be given by Mana Hewitt on jewelry making. Dan Elswick will put the information on Facebook. Ron Ahle agreed to give a program in June on Alaskan Glaciers. Sue Shrader reported she will have a Glass Fusing **Class** in May. Jimmy Armstrong, Ron Ahle and Gary Hert agreed to inventory the **Workshop** machinery, materials and hand tools. Publishing the club charter in the **Newsletter** was discussed. Sue Shrader will get the file to Ron Ahle. It was noted that **Archelogy Day**, May 6, 2017, will be in at the 1797 Ezekiel Harris House located at 1822 Broad Street in Augusta Georgia. (Visit [www.augustamuseum.org](http://www.augustamuseum.org) for more information on this free event.) The need to have club members give ideas for **Field Trips** was discussed. It is important that club members lead trips. Sue Shrader will help **Historian**, Angela Valvasori, with information on club history. Sue Shrader reported a Thank You card was received from the Cayce Museum in response to our \$100.00 donation.

**Old Business:** In the February executive board meeting, the Budget committee agreed to provide a written report to the show committee with recommendations to potentially make the show more profitable. This report was provided to the show committee prior to the March Executive Board meeting. The Show Committee presented information and asked questions of the Budget Committee on the recommendations. Ideas on ways to save money and make money at the show were discussed. A motion to have 8 billboards, the same as 2016, was made by Sue Shrader. It was seconded by Susan Bloodworth and carried. The meeting was adjourned at 8:55.

Respectfully submitted by  
*Sharon Sterrett*

**Columbia Gem & Mineral Society Picnic  
& Rock Swap Sale...Show & Tell  
Sunday April 30, 2017 1:00 to**



**Club Lapidary Workshop  
1601 Frink Street  
Cayce SC 29033**



**Bring a dish of vegetables, meat, dessert,  
fruit or chips and dip to share.  
Club will provide paper products and ice.  
Bring your rocks and lapidary work to sell,  
swap, or for show & tell**

Questions call Sue 803-261-9317 [ashrader@mindspring.com](mailto:ashrader@mindspring.com)

## GENERAL MEETING MINUTES

### March 20, 2017 General Meeting of Columbia Gem and Mineral Society, Inc.

The Columbia Gem and Mineral Society, Inc. held the monthly club meeting on the 4<sup>th</sup> Monday, February 20, 2017, at the McKissick Museum at 816 Bull Street, Columbia, SC 29208 on the USC campus. Because of the Martin Luther King Holiday the General and Board Meetings were reversed. President Jimmy Armstrong called the meeting to order at 7:33 p.m.

**Refreshments** were supplied by Pat and Gary Hert.

**Door prizes** were supplied by Derek Hillman and Kim Cochran.

**New Member** Barbara Molina was present.

**Chair Reports:** Susan Bloodworth reported that she has **Membership** forms and membership cards to give to paid members. The club has 84 adults and 13 children. Abbie Gates gave the **Sunshine** report. Abbie set Jack Seech a card from the club. Ahle reported to look in the Rocky Trails for information on the semi-annual Graves Mountain Rock Swap and Dig. Gary Hert reported that he is available on Sunday, Monday and Tuesday to be at the **Workshop**. Call Gary to use the equipment. Ron Ahle requested that all information for the **Newsletter** be set by the first of the month. Sue Shrader will have a glass fusion **Class** in May. Sue Shrader reported the **Program** in April will be given by Mana Hewitt on jewelry making techniques.

**Old Business:** none

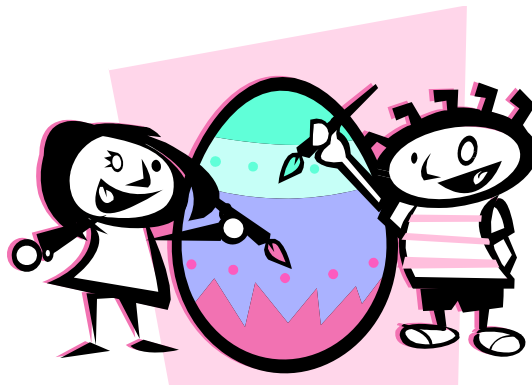
**New Business:** Sue Shrader reported the **picnic** will be April 30, 2017 at the workshop from 1:00 to 5:00. Sue Shrader reported on a **Raffle** the federation is having in place of the stamp program. The proceeds will be used for 2018 scholarships.

**Program:** Kim Cochran gave a program on Birthstones.

Don Burger made a motion to adjourn at 9:04. It was seconded by Shellie Newel and carried.

**Door Prizes:** Derek Hillman brought enough chert for everyone. The numbers were drawn for the prizes brought by Kim Cochran. The winners were: Angela Valvasori, Jesse Gates, Abbie Gates, Alta Cadle, Pat Hert, Barbara Molina, Tony Ethridge, Pam Ethridge, Don Burger, Sharon Sterrett, Dave Dunlap, Fabienne Bolet, Audrey Free and Susan Bloodworth.

Respectfully submitted by  
*Sharon Sterrett*





## Dixie Mineral Council Field Trips

The Southeast Federation of Mineralogical Societies, Inc



The Friendly Federation - Founded in 1976 to serve  
DMC Program of the SFMS Field Trip Committee  
Copyright © All rights reserved.

An Official Field Trip of the Charlotte Gem & Mineral Society (Charlotte, NC) (HOST)  
An Official Field Trip of the Columbia Gem and Mineral Society

**Saturday, April 15, 2017**  
**8:00 AM – 4:00 PM Eastern Time**  
**Sharpes Emerald Prospect**  
**Alexander County, NC**  
**Release Form Required**  
**Fee Site (Details Below)**

**TRIP:** Sharpes Emerald Prospect is operated in association with the Mountain Area Gem and Mineral Association (MAGMA). The club has been generous enough to allow CG&MC to host a field trip at their site. The mine is located in what is considered the most productive emerald mining district in North America. Emeralds are yet to be found, but there are current mineral finds of glass-clear tessin, smoky quartz, tourmaline, muscovite mica, beryl, and other minerals are in abundance. The mine is geared with rockhounds and collectors in mind, and is not salted with material from offsite.

**COLLECTING:** Mining and gathering can suit a variety of styles. Hard rock digging is available in pits and trenches throughout the site. Less rigorous collecting can be found by sifting and gathering in dump piles on the property. All areas of the mine are open to collectors and new areas are opened regularly.

**BRING:** Only hand tools are allowed on site – shovel, pick, hammer, chisel, etc. No power equipment or heavy machinery. Buckets, sifting screens, etc are also useful. Spring weather is unpredictable, so come prepared with season appropriate clothes, sensible footwear, protective eyewear, and raingear if the forecast indicates poor weather. No alcohol is allowed on site, and mine owners request that no garbage is left on the premises.

**REQUIREMENTS:** All visitors must pay fee and sign release form before digging. Disclosure forms and payment can be brought on day of field trip or sent in advance to:

Hiddenite Gems Investment Group  
PO Box 542  
Leicester, NC 28748

Release forms are available here:

<http://www.wncrocks.com/resources/Sharpes%20Emerald%20Prospect%20Release.pdf>

**SPECIAL CONDITIONS:** Protective equipment such as goggles/eyewear, boots, and gloves are recommended. **FEE:** \$25/day for adults, \$20 per day for MAGMA paid members. Children 12 years of age or younger are free but must be accompanied by guardian. **REGISTRATION:** Advance registration is not required, but release form must be completed. **CHILDREN:** Yes, children are allowed, but anyone 12 years of age or under must be accompanied by adult. No pets or facilities. There is a gas station a mile down the road with bathrooms, drinks and snacks.

**DIRECTIONS AND WHERE TO MEET:**

From I-40, take exit 132 toward NC-16. Follow NC-16 North to Hwy-64 East. Turn left on Prichard Lane. Look for sign saying "SHARPES" on right side of road by entrance to mine.

**CONTACT:**

Prior to event, Sam Baker (704) 516-9649.

On day of event: Murray Simon (704) 543-6651





**An Official Field Trip of the Mid-Tennessee Gem & Mineral Society, Inc.  
(Murfreesboro, TN) (HOST)  
An Official Field Trip of the Columbia Gem and Mineral Society**

**Saturday, May 6, 2017  
10:00AM until 3:00PM CDT  
Cumberland Furnace, TN**

**COLLECTING:** We are heading to Cumberland Furnace to collect slag. The slag was a byproduct of making iron. Some of the slag is quite colorful in shades of blue and green ... some with swirls. The slag is easily cut and polished and makes nice pendants – it is too soft for rings.

Our target is a dump pile on the banks of the stream that runs through Cumberland Furnace (access by crossing a large field owned by the community). This dump pile is located about a ¼ of a mile from the parking area. Although the dump pile has the greatest potential, slag can be found anywhere along the banks (both upstream and downstream). Another way to search is by wading downstream from the furnace if the creek is low. I am not sure if conditions will permit - bring wading shoes just in case if you wish to collect in the stream.

**BRING:** You need to bring a hand tool, trowel, small shovel, etc to dig in the slag pile and gloves to protect your hands. Bring a back pack or small buckets for carrying. Boots or wading shoes are recommended as your feet may get wet otherwise.

**CHILDREN:** Everyone is welcome but children must be 6 years or older. They will not be allowed to roam around unattended and must obey all safety requirements and have all safety equipment.

**PETS:** All pets must be under control at all times.

**SEVERAL LODGING SUGGESTIONS:** Depending on which direction you are coming from, I would recommend staying in the Nashville area, Clarksville (north of the furnace) or Dickson (south of the furnace).

**DIRECTIONS AND WHERE TO MEET:**

From Nashville, TN off of I-40 take exit 196 for US-70 S (Bellevue/Newsom Station) go 0.2 miles.

Turn right at TN-1 W/US-70S W go 1.8 miles.

Turn left at TN-1 W/US-70 W/Charlotte Pike go 16.1 miles.

Turn right at TN-47 (White Bluff) go 9.6 miles.

Turn right at TN-48 (Charlotte) go 6.8 miles.

Take a slight left at Earl Leech Rd go 0.2 miles.

Turn left on Cinder Road. You will see a log cabin (Starks Cabin) on the left hand side of the road. You can park in the field next to the cabin.

**ASSEMBLY TIME:** 10:00 AM at Cinder Road, Cumberland Furnace, TN

Meet near the old log cabin on Cinder Road.

**CONTACT:**

**For further information or alternative directions contact:** John Martin, MTGMS President at [info@mtgms.org](mailto:info@mtgms.org) call my cell phone 615-210-5385 Visit our website [www.mtgms.org](http://www.mtgms.org) and visit us on Facebook.



### Scholarship Committee, SFMS Workshop Scholarship Raffle

At the 2016 Annual Meeting, the SFMS replaced the stamp collecting program with a drawing to raise funds to provide full Scholarships to the SFMS Workshops. THE SFMS is asking all member clubs to participate in two ways. The first way is to donate an item to be a drawing prize. Each member club will receive acknowledgement if it donates a prize, or if a member of the club donates a prize. All prizes should be mailed to Dave Wayment, PO Box 780791, Sebastian, FL 23978. Each prize should be identified, include the value of the item (we request that prizes have at least a \$25 value), identify who made the item if it is hand made, and who donated the item. Photographs and descriptions of all prizes will be posted on the SFMS website and published in the Loadstar

The second way to participate is to sell the drawing tickets. Each member club is being sent 100 tickets for the drawing. The tickets are \$5 each or 5 tickets for \$20. For CGMS, Sue Shrader will be in charge of selling the tickets. The drawing for the prizes will be held at the Annual Meeting.

Photos of the donated prizes will be available starting with the March Lodestar, and shortly on the website. If you have any questions, please contact Dave Wayment at 772-532-6432.

[http://www.amfed.org/sfms/\\_pdf/Lodestar%20February%202017.pdf](http://www.amfed.org/sfms/_pdf/Lodestar%20February%202017.pdf)

Please help make this program a success. Let's see how many SFMS Workshop Scholarships we can create for 2018. *The Raffle Tickets are for sale at the club meetings*

### 61<sup>st</sup> Region II Science and Engineering Fair

On Friday, March 10, 2017 The Region II Science and Engineering Fair took place at The Carolina Coliseum, 701 Assembly Street, Columbia, SC 29201. The judges for The Columbia Gem and Mineral Society in the Junior Division were Jimmy Armstrong, Susan Bloodworth and Dave Dunlap. In the Senior Division the Judges were Jimmy Armstrong and Dave Dunlap.

The Awards Ceremony was held on Sunday, March 19, 2017 at USC's School of Law, 701 Main Street, Columbia, SC 29208. Jimmy Armstrong presented the awards for CGAMS. Our First Place winners received \$100.00, Second Place winners received \$50.00 and Third Place winners received \$25.00. All winners received a certificate.

The Junior Division winners were:

<u>Student</u>	<u>School</u>	<u>Project</u>
1st Place: <b>Paige Maylath</b>	Chapin Middle School	I Swim With That?
2 <sup>nd</sup> Place: <b>Esther Darko</b>	Kelly Middle School	Using the Antimicrobial Properties of Calcium Carbonate and Calcium Oxide to Transform Undrinkable Water into Clean...
3 <sup>rd</sup> Place: <b>Lilly Bickel</b>	Dent Middle School	Ocean Pollution Solution

The Senior Division Winners were:

1 <sup>st</sup> Place: <b>Vinita Cheepurupalli</b>	Spring Valley HS	Novel Mosquito Control: A Natural Approach to Reducing and Repelling Mosquito Populations
2 <sup>nd</sup> Place: <b>Sreya Varanasi</b>	Spring Valley HS	The Effect pf copper(11) sulfate and iron (11) sulfate gas on production, absorbance and pH of <i>Chlamydomonas reinhardtii</i>
3 <sup>rd</sup> Place: <b>Victoria Hopkins</b>	Spring Valley HS	The effect of cilantro on lead concentration in water and the growth of Escherichia coli colonies

## **AREA SHOWS**

April 8-9—Madison, TN: Annual show; Middle Tennessee Rockhounds, Amqui Station; 303 Madison St; Sat. 10-4; Free Admission; 4th Annual Dig It, Gem, Mineral and Fossil Festival: Wayne Ramsey, (615)-491-2293; e-mail: [swap@rockhound.org](mailto:swap@rockhound.org); Web site: [rockhound.org](http://rockhound.org)

April 22-23—Memphis TN: Annual show; Memphis Archaeological and Geological Society, Memphis International Agricenter; 7777 Walnut Grove Rd. Memphis, TN ;WC McDaniel, (901)-274-7706; e-mail: [info@theearthwideopen.com](mailto:info@theearthwideopen.com); Web site: [www.theearthwideopen.com](http://www.theearthwideopen.com)

May 6-7—North Charleston, SC: Annual show; Lowcountry Gem and Mineral Society, North Charleston Coliseum; 5001 Coliseum Drive; Sat. 10-5, Sun. 10-5; Free Admission; Dig in the Fossil Pit, unwrap the mystery goodies in our grab bags, or discover nature's hidden beauty by cracking open a geode!; contact Katie Reed, North Charleston, SC 29405; e-mail: [katie.huemmer@gmail.com](mailto:katie.huemmer@gmail.com)

May 12-14—Franklin, NC: Annual show; Gem & Mineral Society of Franklin, NC, Carpenter Building; 1288 Georgia Road (US441); Fri. 10-5, Sat. 10-5, Sun. 10-4; Free Admission; Demos, rough and finished goods.; contact Norman Holbert, (828)-634-0350; e-mail: [normholbert@comcast.net](mailto:normholbert@comcast.net)

November 17 -19; Columbia, SC 50<sup>th</sup> Annual Gem Mineral & Jewelry Show ...Jamil Temple, 206 Jamil Rd. Columbia, SC 29210; Adults \$5.00, 16 & under Free ; All military free  
803-736-9317 [ashrader@mindspring.com](mailto:ashrader@mindspring.com)

## **Rock Swaps**

April 15, 2017 10am to 4pm Marietta, GA Cobb County Gem & Mineral Society 3rd Annual Rock Swap... 516 Atlanta St. Marietta, GA  
Bob Hohn [robert\\_hohn@comcast.net](mailto:robert_hohn@comcast.net)

April 28 – 30, 2017 Graves Mountain, Lincolnton, GA Rock Swap & Dig  
Collecting Rutile, Kyanite, Lazulite, Iridescent Hematite, Pyrophyllite, Pyrite, Ilmenite, Fuchsite, Barite, Sulfur, variscite, woodhouseite, crandallite, strengite, phosphosiderite, cacoxenite, blue quartz, quartz crystals, etc.  
Friday April 28, 8AM to 6 PM  
Saturday April 29, 8AM to 6PM  
Sunday April 30, 8AM to 6PM



**Columbia Gem and Mineral Society**  
MEMBERSHIP FORM  
(Membership Year runs January 1 – December 31)  
<http://www.cgams.org>



Check one: **DUES CURRENT MEMBERS**

Individual \$25 \_\_\_\_\_  
Family \$30 \_\_\_\_\_

**DUES NEW MEMBERS ONLY (Prorated Quarterly)**

Individual \$26 \_\_\_\_\_ \$21 \_\_\_\_\_ \$14 \_\_\_\_\_ \$7 \_\_\_\_\_  
Family \$31 \_\_\_\_\_ \$24 \_\_\_\_\_ \$16 \_\_\_\_\_ \$8 \_\_\_\_\_  
Jan.1 April 1 July 1 Oct.1

Name: \_\_\_\_\_ Birth Date: \_\_\_\_\_

Address: \_\_\_\_\_

City \_\_\_\_\_ State \_\_\_\_\_ Zip: \_\_\_\_\_

Home Phone: \_\_\_\_\_

Cell Phone(s) \_\_\_\_\_

Email Address: \_\_\_\_\_

**FAMILY MEMBERSHIP: Spouse and children under 18 yrs. living at the same address.**

Spouse: \_\_\_\_\_ Birth Date: \_\_\_\_\_

Child: \_\_\_\_\_ Birth Date: \_\_\_\_\_

Child: \_\_\_\_\_ Birth Date: \_\_\_\_\_

Child: \_\_\_\_\_ Birth Date: \_\_\_\_\_

Child: \_\_\_\_\_ Birth Date: \_\_\_\_\_

**CLUB PARTICIPATION:** Please indicate which committee you can help with:

Field Trips \_\_\_\_\_ Membership \_\_\_\_\_ Newsletter \_\_\_\_\_ Programs \_\_\_\_\_ Social \_\_\_\_\_

Faceting Guild \_\_\_\_\_ Workshop \_\_\_\_\_ Show Chairman \_\_\_\_\_ Publicity \_\_\_\_\_ Sunshine \_\_\_\_\_

Rookie Rockhounds \_\_\_\_\_

May we call on you to work with a Board Member on a committee or project? \_\_\_\_\_

Make all checks payable to Columbia Gem and Mineral Society

And mail to: Columbia Gem & Mineral Society, PO Box 6333, Columbia, SC 29260

**Previous Membership in another Mineral Society?**

Have you held an office in another club? Club/Office \_\_\_\_\_

Do you have a rock collection? If so, what? \_\_\_\_\_

What lapidary skills and interests do you have? \_\_\_\_\_

*For Club Use*

Amount Paid \_\_\_\_\_ Check# \_\_\_\_\_ Cash Received \_\_\_\_\_ Date Received \_\_\_\_\_

Club Officer Receiving Payment \_\_\_\_\_

\_\_\_\_\_

The Columbia Gem and Mineral Society is an organization of persons associated together to promote popular interest in and to provide means for the exchange of knowledge of the Earth Sciences – Geology, Mineralogy, and Paleontology – and of the related Arts – Lapidary and other. The Society is a member of the Southeast Federation Mineralogical Societies Inc. and affiliates of the American Federation of Mineralogical Society Inc.

**2017 OFFICERS and COMMITTEE CHAIRPERSONS**

**EXECUTIVE COMMITTEE**

President.....Jimmie Armstrong...(803) 438-6000.....rvrdvr29078@gmail.com  
 Vice President.....Ron Ahle.....419-2923.....the bears@earthlink.net  
 Treasurer.....Laura Tesh.....731-4760.....lauralaw@bellsouth.net  
 Secretary.....Sharon Sterrett.....356-1472.....ssterrett@sc.rr.com  
 Past President.....Angela Valvasori.....419-2923.....thebears@earthlink.net

**COMMITTEE**

Membership .....Susan Bloodworth.....604-1045.....susanbloodworth374@att.net  
 Auctioneer.....Benira Sutphin.....315-5250.....benira@bellsouth.net  
 Club Liaison.....Jim Cobb.....794-0045.....jocobb3@bellsouth.netFaceting  
 Guild.....Fred Meetze.....345-7463.....fredfacetor@gmail.com  
 Facebook.....Dan Elswick.....252-2346.....elswickdan@yahoo.com  
 Field Trip.....Open  
 Historian.....Angela Valvasori.....419-2923.....thebears@earthlink.net  
 Librarian.....Sheila Frame.....739-0682.....snframe@aol.com  
 Newsletter Editor.....Ron Ahle.....419-2923.....thebears@earthlink.net  
 Program.....Sue Shrader.....736-9317.....sue\_shrader@mindspring.com  
 Rookie Rockhound .....Open  
 Show.....Michael Montebello.....791-9921.....mauimonte@hotmail.com  
 Sunshine .....Abbie Gates.....799-9279.....2rustygates@att.net  
 Website.....Michael Montebello.....791-9921.....mauimonte@hotmail.com  
 Workshop.....Gary Hert.....794-9362.....gchert@hotmail.com





**CGMS Website**

***Please visit our Website:***

<http://www.cgams.org>

Webmaster: Mike Montebello

**Monthly Meeting**

Except for January, the meetings are held the third Monday of each month at the McKissick Museum's Auditorium, on the USC campus. Socializing and refreshments at 7:00 pm; Meeting at 7:30 pm. Please enter from the Horseshoe entrance.

**Executive Board Meetings:**

Except for January, the meetings are held on the fourth Monday of each month at Grecian Gardens, 2312 Sunset Blvd., and West Columbia. Meal is at 6:30pm. Meeting is at 7:00 pm.

**Rocky Trails  
PO Box 6333  
Columbia, SC 29260**