



# Rocky Trails



April 2018

Volume 12 Issue 3

The Newsletter of the Columbia Gem and Mineral Society



## EDITOR'S MESSAGE

Dear Members,

Greetings members. Spring at last! A great time to get out and the club picnic is the perfect opportunity. Come out to this classic annual event on Sunday, April 22<sup>nd</sup> to enjoy good food, fellowship and learn about our hobby. This is a great way to meet fellow members share stories about rockhounding adventures!

In last month's issue of the Rocky Trails we asked for volunteers to help sort, identify, and organize rock and fossil specimens donated by Max Smith's family. I am glad to report that we have completed the first task of going through the hundreds of pounds of specimens. This could not have been done without all to the folks (from both the Aiken and Columbia Clubs) who came out and donated their weekend time to help. It was a huge job and the club will benefit from the work that was accomplished.

Welcome to all the new members to our club. We look forward to sharing our club activities with all of you! Just as a reminder, for everyone who has not paid your annual dues, the dues were needed by the end of March. Don't let your membership become delinquent. If you have friends who would like to join the club, there is an application form on our website.

Until next time,  
Ron Ahle

## NEXT MEETING

**April 16, 2018**

### PROGRAM:

#### **Show and Tell**

Bring a rock that you have found or bought, or a piece of jewelry. This includes items you have found on field trips, made in a lapidary class, or from your collection. Certificates will be awarded to the prettiest and ugliest items.

Bring those fossils, crystals or jewelry!

### REFRESHMENTS

Naomi & Gary Cadle

### DOOR PRIZE

Sue Shrader

## LAPIDARY WORKSHOP

The workshop is open and the hourly rate for using one of these machines is \$4.00/hour. If you are interested in using one of these machines, call Gary Hert @ 794-9362. The Club has a 24" flat lap polisher that is available for rent. Please contact Gary for details.

Club meetings are at The McKissick Museum at USC. Parking is available beside the museum where Bull St. runs into Pendleton St. See map on page 10. If you are unable to use the front steps of the McKissick Museum, there is an elevator on the ground floor down the hall from the parking lot. If you need to use the elevator call 803-261-9317 to have the door on the street level by the parking lot opened.



**Columbia Gem & Mineral Society Picnic  
& Rock Swap Sale...Show & Tell**

**Sunday April 22, 2018; 1:00 to 5:00**



**Club Lapidary Workshop  
1601 Frink Street  
Cayce SC 29033**



**Bring a dish of vegetables, meat, dessert,  
fruit or chips and dip to share.  
Club will provide paper products and ice.  
Bring your rocks and lapidary work to sell,  
swap, or for show & tell**

**Questions call Sue 803-261-9317 ashraider@mindspring.com**

**Assemble Grab Bags for the Columbia Gem & Mineral Society Show**

Tuesday May 8, 2018 12:00 to 3:00

Club Lapidary Workshop. Cayce, SC

Bring your lunch and a drink. Bring any crystals or fossils to use in the grab-bags.

To sign up call Sue 803-736-9317 ashraider@mindspring.com



**Sunshine**

Abbie Gates broke her right ankle and is recovering to a point where she is able to get around.

Scott Shrader had emergency surgery for a ruptured appendix and the infection that it caused. He is in recovery.

Sue Shrader is recovering after hip surgery.

### [Field Trip to Graves Mountain](#)

#### April 27-29, 2018 Graves Mountain, Lincolnton, GA Rock Swap & Dig

Collecting Rutile, Kyanite, Lazulite, Iridescent Hematite, Pyrophyllite, Pyrite, Ilmenite, Fuchsite, Barite, Sulfur, variscite, woodhouseite, crandallite, strengite, phosphosiderite, cacoxenite, blue quartz, quartz crystals, etc.

Friday April 27, 8AM to 6 PM

Saturday April 28, 8AM to 6PM

Sunday April 29, 8AM to 6PM

The caretaker in charge of Graves Mountain, Clarence Norman Jr., has announced plans to hold a three day dig and rock swap on the Mountain during April and October. He will have the mountain open to collecting from 8 am to 6 pm each day. All participants must stop at the welcome table in the Hospitality tent to sign a liability release and make a small contribution to defray the cost of opening the mountain and providing port-o-lets. There will be several golf cart type, four wheeled vehicles available to transport those participants who have trouble walking long distances. The dig will cease and everyone is expected to be off the mountain by around 6 pm each day. Participants will be allowed to park in a designated area on the mountain.

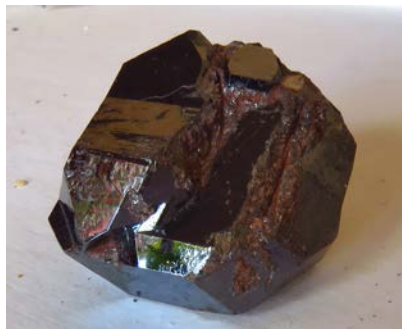
**Rock Swap and Hot Food/Drinks:** Junior will set aside an area in the upper parking lot for tables to be setup for daily rock swaps. Anyone who would like to setup a table(s), please contact Junior at the phone numbers listed below. Hot food cooked on the grill, cold drinks and chips will be available for purchase on the mountain during all three days of these events.

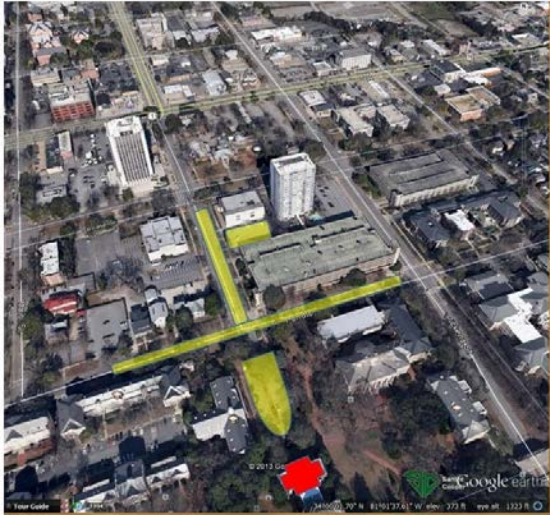
Contact Information:

Clarence Norman Jr. (Junior) - 706-359-1544 (his business) or 706-401-3173 (his cell)

**DIRECTIONS:** From Columbia, take I-20 east to the exit for Washington, GA SR 78 (SR 10, SR 17) and turn left. Travel north to Washington, turn right onto SR 378 and drive 11 miles to the Graves Mountain area. The entrance to Graves Mountain is on your right about 8/10 mile past the Lincoln county line sign. - The entrance is a paved road that goes through a gate and up a hill. Please park along the access road and then proceed to the "Welcome Tent" at the end of the pavement to obtain a liability release form and to make a donation for the portable bathrooms, etc.

**THESE DIGS ARE OPEN TO ALL  
NO NEED TO SIGN-UP, JUST SHOW UP FOR ALL "ROCK SWAP AND DIGS"!**





**Yellow shaded areas = suggested parking**      **McKissick Museum (in Red)**

### [McKissick Museum](#)

#### **McKissick Museum:**

[www.artsandsciences.sc.edu/mikissickmuseum](http://www.artsandsciences.sc.edu/mikissickmuseum); phone 803.777.7251; College of Arts and Sciences, University of South Carolina; 816 Bull Street, Columbia, SC 29208

**Natural Curiosity:** The University of South Carolina and the Evolution of Scientific Inquiry in the Natural World is an ongoing exhibit in the 3rd floor gallery. Humans possess a fascination with the natural world around them. From the 32,000-year-old cave paintings of horses in France to the giraffe stickers today's children paste into their activity books, we can see that humans are eager to see, touch, collect, and understand nature. Ongoing, 3<sup>rd</sup> floor gallery.

Chris CiCiMurri Curator of Natural Science. 803-777-2823; [cicimurri@sc.edu](mailto:cicimurri@sc.edu)

### [South Carolina State Museum](#)

#### **Cosmic Fridays: A Musical Experience**

Fri., April 27.... Doors open at 6 p.m. Shows at 7, 8, 9, and 10 p.m.

Our Friday night planetarium experiences have gone Cosmic! In addition to laser shows, guests can also immerse themselves in a NEW full dome musical experience featuring eye-catching visuals in the 55ft digital dome BlueCross BlueShield of South Carolina planetarium. Plus, food available for purchase and a cash bar. ONE SHOW: \$10 general public / \$8 museum members. TWO SHOWS: \$15 general public / \$12 museum members.

#### **Lyrids**

Active from April 16th to April 25th      Peak Night April 21 to 22

The Lyrids are a medium strength shower that usually produces good rates for three nights centered on the maximum. These meteors also usually lack persistent trains but can produce fireballs. These meteors are best seen from the northern hemisphere where the radiant is high in the sky at dawn. Activity from this shower can be seen from the southern hemisphere, but at a lower rate.

#### **Eta Aquariids**

Active from April 19th to May 26th      Peak Night May 6 to 7

The Eta Aquariids are a strong shower when viewed from the southern tropics. From the equator northward, they usually only produce medium rates of 10-30 per hour just before dawn. From the equator to 25S they can produce rates of 40-60 per hour just before dawn at maximum. The longer nights in the southern hemisphere allows the radiant to rise higher in their sky. South of 25S the radiant altitude actually decreases. Activity is good for a week centered the night of maximum activity. These are swift meteors that produce a high percentage of persistent trains, but few fireballs.

[www.scmuseum.org/](http://www.scmuseum.org/) 803-898-4921 301 Gervais Street Columbia, SC 29201

## EXECUTIVE MEETING MINUTES

### March 2018 Board Meeting of Columbia Gem and Mineral Society, Inc.

The Columbia Gem and Mineral Society met on March 25, 2018 at the CGMS workshop at Grecian Gardens. Members and officers present were Jimmy Armstrong, Ron Ahle, Angelia Valvasori, Sharon Sterrett, Sue Shrader, Susan Bloodworth, and Dan Elswick. President Jimmy Armstrong called the meeting to order at 7:00.

**President Report:** Jimmy thanked all for coming. Jimmy thanked all who participated in the sorting, organization, and identification of mineral specimens and fossils at the workshop, especially Ron who coordinated the efforts. **Vice President Report:** Ron Ahle also thanked all for efforts at the workshop and said the day was fun. He said now some specimens could be used for cutting geodes at the show, sharing with the Aiken Club, sharing with the museum at the McKissick Museum, using for grab bags, and sharing with club members through door prizes and a silent auction. Ron wants to make sure boxes are label, contact is made with the Aiken Club for their particular interests, and pull some items for the April Club Picnic. He asked for ideas about how to proceed. Some officers said they would contact Aiken Club, meet with Ron for identifying specimens for door prizes and grab bags, and put specimens out for the April Picnic Sale. Some officers said they would be glad to wash specimens for children's grab bags. Some discussion was made about having a silent auction using some of the better specimens. **Secretary and Membership:** Susan Bloodworth indicated that she provided the most recent update for membership for sending out the Rocky Trails and that membership had increased over last year.

**Programs:** Sue Shrader commended Kim Cochran for his interesting and fun presentation. She also reminded board members that she received questions from the public and forwarded pertinent information to club officers and members. She asked for ideas for future programs and Ron Ahle agreed to do a program on caves in July. Other ideas for programs were "Show and Tell," Cici Murray from the museum, meteorites, Dr. Goodyear, geology, lapidary work, Mike Koenig, and Jim Knight. Sue said flyers for our show were ready and could be passed out. Sue said the **Picnic would be on Sunday, April 22, at the workshop on Frink Street.** She said to remind members to bring food and specimens to swap and trade at the picnic. She said she would be doing a presentation at the end of August at the Lexington County Library. **Facebook:** Dan Elswick said Facebook interest continues to grow. **Workshop:** Sue said she would be teaching a glass fusion glass in June. **Rocky Trails:** Ron said to please forward him all pertinent information by the 1<sup>st</sup> of each month, but for April, members could send information by the 8<sup>th</sup> because he would be on vacation. **Liaison:** Jim Cobb said Aiken Club had a wonderful show in March. They also had a great presentation in March with Amos Cunningham who talked about specimens found on his property.

**Old Business:** none, **New Business:** There was some discussion about how to have a silent auction for some of the better specimens in the Max Smith collection.

Since there was no other business, Jim called for a motion to adjourn, which was voted on and the meeting adjourned at 8:20.

Respectfully submitted by  
*Susan Bloodworth*

## GENERAL MEETING MINUTES

### March 19, 2018 General Meeting of Columbia Gem and Mineral Society, Inc.

The Columbia Gem and Mineral Society, Inc. held the monthly club meeting on the 3<sup>rd</sup> Monday, February 19, 2018, at the McKissick Museum at 816 Bull Street, Columbia, SC 29208 on the USC campus. President Jimmy Armstrong called the meeting to order at 7:30 p.m.

Jimmy introduced the guest speaker and asked visitors to introduce themselves. Jimmy thanked Gary and Pat Hert and Susan Bloodworth for refreshments, and he thanked Chris Glass and Kim Cochran for contributing door prizes. **President's Report:** Jimmy Armstrong informed members that the Max Smith collection had been sorted and organized, and he thanked all who helped. **Treasurer's Report:** no update. **Membership:** Susan Bloodworth said that membership was at 110. **Programs:** Sue Shrader announced the upcoming picnic would be on April 22 at the work shop on Frink Street. She also noted that she would be offering a glass fusion class and setting up a day for making grab bags. She would post dates at a later time. **Show Committee:** Sharon Sterrett said that they were working on details. **Vice President Report:** Ron Ahle talked about plans for the Max Smith Collection: share with Aiken Club, grade for show to cut geodes, and share with members. **Field Trip Update:** Ron talked about the Dixie Mineral Field Trip in Clarksville, Georgia, and the Graves Mountain Field Trip open April 27-29 which had rutile quartz, kyanite, and lazurite. **Facebook:** Dan Elswick said that we were over 200 likes, and he invited members to share interesting pertinent information on Facebook. There was a general discussion about setting up a group Facebook site, but members indicated that it was preferable to leave the page open for the public. **Workshop:** Gary Hert noted he had added a padlock for security. He also reminded members that if they wanted to use workshop, to call him and set up time. **Sunshine:** Abby Gates said Sue Shrader's son, Scott, had been seriously ill from appendectomy surgery. She (Abby) was better from her broken foot, and Sue Shrader was moving about better after hip surgery. **News Letter:** Ron Ahle said he would work on updating membership email list, and Susan Bloodworth would send him updated members' emails. **Liaison:** Jim Cobb said Aiken Club had a wonderful Gem and Mineral Show and that the Columbia and Aiken Clubs continue to enjoy a great relationship.

**Old Business:** none

**New Business:** Jimmy Armstrong asked for recommendations for finding solution for relocating the workshop before May 2019. He suggested that the club set up a committee to work on finding location for workshop. The members voted to set up this committee. Ron Ahle also asked members to look at what may be available near them.

**Adjourn:** Since there was no other business, Jimmy called for a motion to adjourn meeting. The meeting was adjourned, and door prizes donated by Chris Glass and Ken Cochran were drawn. Sue Shrader introduced speaker Kim Cochran.

**Program:** Kim Cochran conducted a rock and mineral test with those in attendance. Prizes were given out for highest scores.

Respectfully submitted by  
*Susan Bloodworth*



## Dixie Mineral Council Field Trips

The Southeast Federation of Mineralogical Societies, Inc



The Friendly Federation - Founded in 1976 to serve  
DMC Program of the SFMS Field Trip Committee  
Copyright © All rights reserved.

An Official Field Trip of the Lowcountry Gem & Mineral Society (Macon, GA) (HOST)  
An Official Field Trip of the Columbia Gem and Mineral Society

**Saturday, May 19, 2018**  
**10:00 AM til 3 PM EDT**  
**119 Railroad Ave**  
**Harleyville, SC 29448**

**No limit on Attendees; No Registration Required, No Fee**

**TRIP:** While fossil hunting at the LaFarge Quarry is no longer permitted, collecting is permitted in a lot next to Old Town Hall in Harleyville, SC. The material is fossil-bearing dump material brought in from the nearby LaFarge Quarry. The collecting site is approximately the size of a tennis court.

**COLLECTING:** The material from this quarry cuts 80 feet through the Harleyville Formation (Late Marine Eocene) and the Cross Formation (Middle Marine Eocene). You will find fossil shark teeth, bones, brachiopods, and other marine fossils.

**BRING:** Digging tools, shovels, screens, buckets, work gloves, and don't forget weather protection gear, water, and snacks. **CHILDREN:** This field trip is suitable for children but they must be supervised at all times.

**PETS:** Pets are allowed as the site is within city limits; leash is required at all times.

**FACILITIES:** As the site is within city limits, nearby facilities are available at or near the site.

**REQUIREMENTS:** No specific requirements are necessary for the site. Safety equipment like hard hat, safety glasses, steel-toed boots, gloves, etc. are not required.

**DIRECTIONS AND WHERE TO MEET:**

From I-26, take Exit 177 toward SC 453 to Harleyville.

Go 1.3 miles (past the LaFarge Quarry).

Turn left onto West Main Street (Hwy. 178) and go 0.3 mile.

Turn right onto Railroad Avenue.

Meet at 119 Railroad Avenue in adjacent to the old Harleyville Town Hall building

**CONTACT:** Lawrence Moss, Field Trip Coordinator, if you have any questions. Phone number 843-819-0726. Email: Jorel611@yahoo.com.

### Social Media Helps our Club Stay Social!

Join us on Facebook, our social media outlet, to learn about activities of the club and to share your club-related experiences. From any Facebook page (not Google), you can search for “Columbia Gem and Mineral Society” to access the club page. Once you get there, you can click on “Like” this page and set your preferences for notifications under the “Following” button.

Share the CGMS Events and Posts with your friends! Add photos of club-related topics! Use this page to share your rock and lapidary interests. Anyone can post on our page, just keep it gem and mineral relevant (no profanity or off-topic posts please). Enjoy, this is one way members of our club can stay connected.

To access our web site, just type “CGMS.ROCKS” in your internet browser or you can search for Columbia Gem and Mineral Society in Google.

### AREA SHOWS

**April 24-26—IRVINE, KENTUCKY:** Annual show; Mountain Mushroom Festival, Estell County School's Central Office; 253 Main Street,. Francine Bonny, (606)-723-1233; e-mail: [mushroomfestival@irvineonline.com](mailto:mushroomfestival@irvineonline.com); Web site: [www.mountainmushroomfestival.org](http://www.mountainmushroomfestival.org)

**April 28-29, 2018 ...Memphis, TN. Memphis Mineral, Fossil, Jewelry Show**  
“The Earth Wide Open” Memphis Archaeological and Geological Society; Memphis International Agricenter, 7777 Walnut Grove Rd. Memphis, TN ; web: [www.TheEarthWideOpen.com](http://www.TheEarthWideOpen.com);  
email [info@theearthwideopen.com](mailto:info@theearthwideopen.com).  
Show Chair James Butchko 901 743-0058  
Dealer Chair WC McDaniel 901-274-7706, 901-490-3575

**May 12, 2018: Aiken, SC : 9 to 3, Horse Creek Antique Bottle & Pottery Show**  
H. Odell Weeks Recreation Center 1700 Whiskey Rd. Aiken, SC  
Geneva 803-593-2271

**May 11, 12, & 13, 2018; Franklin, NC  
Gem & Mineral Society of Franklin, NC**  
Fri. & Sat., May 11th & 12th, 10:00 AM - 5:00 PM  
Sun., May 13th, 10:00 AM- 4:00PM  
Carpenter Community Center, 1288 Georgia Rd. (US441), Franklin, NC  
Contact: Norman Holbert, 828-634-0350, [normholbert@comcast.net](mailto:normholbert@comcast.net)

**May 10-13—FRANKLIN, NC:** Annual show; Bellpoint Promotions , Echo Valley Showplace ; 6456 Sylva Rd. (across from GLW); Damian Belgali, (678)-852-8273; e-mail: [mbellpoint@gmail.com](mailto:mbellpoint@gmail.com); Web site: [bellpointpromotions.com](http://bellpointpromotions.com)

**May 11-13—Franklin, NC: Retail show;** The Gem & Mineral Society of Franklin, NC, Robert C. Carpenter Building; 1288 Georgia Rd. (US441); Norm Holbert, Club - 25 Phillips St., Franklin, NC 28734, (828)-634-0350; e-mail: [normholbert@comcast.net](mailto:normholbert@comcast.net)Club



**May 11-13—Marietta, GA:** Annual show; Georgia Mineral Society, Cobb Civic Center; 548 South Marietta Parkway, SE; Kathy Wiggins, (770)-375-5907; e-mail: kw5760@aol.com; Web site: www.gamineral.org

**May 25-27—Salem, VA:** Annual show; Treasures Of The Earth Gem & Jewelry Shows, Salem Civic Center; 1001 Boulevard; Van Wimmer - Show Director, 5273 Bradshaw Rd, Salem, VA 24153, (540)-384-6047; e-mail: vanwimmer@comcast.net; Web site: [www.toteshows.com](http://www.toteshows.com)

---

## 15th Annual Western North Carolina Rockhound Roundup July 22nd - 29th, 2018

**The largest annual Rockhound gathering in the state!  
Hosted by the Mountain Area Gem and Mineral Association**

This event will be based at Camp Stephens. This property is located just outside the city of Asheville off of Interstate 26. The camp is just 3.5 miles from the Interstate but located in a secluded wooded area on the French Broad River. There is room for many RV's and tent campers. There is a large indoor pavilion with two bathrooms, two showers (note that the showers and bathrooms have been renovated and are in excellent working now) a kitchen, electricity and water for the outside campers and inside the pavilion. There are large campfire pits for use by campers. I will also have two porta potties' on site for extra bathrooms. There will be a dumpster on site for all garbage (be sure to bag your garbage before putting it in the dumpster). Campers will be able to swim, fish, canoe, snorkel, etc. in the river. The camp area is completely wooded so there is plenty of shade. We will be allowed to use the numerous tables provided in the pavilion to set up and swap/sale our rocks and minerals. Three miles from the camp are numerous gas stations, a mall, restaurants, motels/hotels and more. Campers are welcome to begin arriving Sunday afternoon the 21st to set up camp and get ready for the week's events.

Agenda: We have coordinated this event to coincide with the numerous gem and mineral shows that are taking place in Franklin, North Carolina the same week. I am working on a variety of new mines to visit this year and they will be added to this announcement as I confirm their availability. There will be directions given to all attendees, and campers and participants can visit any of the mines listed here, any day of the roundup as many times as they like. I will have release forms and take payment for some mines at the camp and will provide instructions as to where to pay for some mines. Mines we will have full access to during the week of the roundup:

**Crabtree Emerald Mine** in Mitchell County, NC. Fee: \$10 for those camping at the roundup, \$15 for all others. Release forms and payment will be collected at the camp prior to the dig. Directions will be provided at camp. **Sinkhole Mine** in Mitchell County, NC. No fee, directions will be provided at camp. **Little Pine Garnet Mine** in Madison County, NC. Fee: \$25 per person. Forms and payment are handled at the office of the Sandy Bottom Trail Rides before proceeding to the mine. Directions will be provided at camp. **Sharpe's Emerald Prospect** in Hiddenite, NC. Fee \$20 for those camping at the roundup, \$25 for all others. Release forms and payment will be collected at the camp prior to the dig. Directions will be provided at camp. More mines to be added!

We will be visiting the numerous gem and mineral shows in Franklin, NC daily.

There will be demonstrations on wire wrap, flint knapping, cabochon making, etc. Display tables will be available to show off your favorite specimens. The members have a cookout in the evening and a big campfire. There will be tables setup throughout the week for people to sell and trade their rocks and minerals, gems and jewelry.

Saturday the 28th; THE FEAST! Everyone should bring a dish or desert and something to drink. If you need to cook something for the meal, you should start cooking around 1:00 to be ready to eat around 3:00.

Fee for Roundup: \$40.00 per person. Vendors, \$60.00. This covers all 7 days of the Roundup. Kids 12 and under are free.

If you plan to only attend a few of the days, the cost will be \$10.00 per day.

Accommodations: Camping on the Camp Stephens property is included in the above cost.

Directions: Take exit 33 off of Interstate 26 just outside of Asheville NC. Go west on Brevard Road/Hwy. 191. Drive 3.5 miles to Clayton Road on the left, turn left and drive 2/10ths of a mile to the entrance to Camp Stephens on the left. You will see a large MAGMA sign at the entrance. If coming from Exit 37 off I-26, turn right onto Clayton Road, the event will be on the right. Address: 263 Clayton Road, Arden, NC.

There are two KOA campgrounds in the area:

East Asheville KOA: reservations:1-800-562-5907, information: 828-686-3121

West Asheville KOA: reservations: 1-800-562-9015, information: 828-665-7015

For those who would rather stay in a hotel in the area, there are several hotel/motels 3.5 miles from the camp at the I-26 exit. For more info on these motels:

Country Inn and Suites: 845 BREVARD RD, Asheville, NC 28806 (828) 670-9000

Rodeway Inn and Suites: 9 Wedgefield Drive, Asheville, NC 28806 (828) 670-8800

Fairfield Inn and Suites: 11 Rocky Ridge Road, Asheville, NC 28806 (828) 665-4242

Hampton Inn: One Rocky Ridge Road, Asheville, NC 28806 (828) 667-2022

Comfort Suites: 890 Brevard Road, Asheville, NC 28806 (828) 665-4000

This roundup is open to all clubs and anyone visiting the area from out of town who would like to attend. Remember to bring plenty of rocks and minerals to trade, sell, and show.

For more information, contact Rick Jacquot at: 828-779-4501 or email [rick@wncrocks.com](mailto:rick@wncrocks.com)

The Columbia Gem and Mineral Society is an organization of persons associated together to promote popular interest in and to provide means for the exchange of knowledge of the Earth Sciences – Geology, Mineralogy, and Paleontology – and of the related Arts – Lapidary and other. The Society is a member of the Southeast Federation Mineralogical Societies Inc. and affiliates of the American Federation of Mineralogical Society Inc.

**2017 OFFICERS and COMMITTEE CHAIRPERSONS**

**EXECUTIVE COMMITTEE**

President.....Jimmie Armstrong...(803) 438-6000.....rvrdvr29078@gmail.com  
 Vice President.....Ron Ahle.....419-2923.....the bears@earthlink.net  
 Treasurer.....Laura Tesh.....731-4760.....lauralaw@bellsouth.net  
 Secretary..... Susan Bloodworth.....604-1045.....susanbloodworth374@att.net

**COMMITTEE**

Membership .....Susan Bloodworth.....604-1045.....susanbloodworth374@att.net  
 Auctioneer.....Benira Sutphin.....315-5250.....benira@bellsouth.net  
 Club Liaison.....Jim Cobb.....794-0045.....jocobb3@bellsouth.netFaceting  
 Guild.....Fred Meetze.....345-7463.....fredfacator@gmail.com  
 Facebook.....Dan Elswick.....252-2346.....elswickdan@yahoo.com  
 Field Trip.....Open  
 Historian.....Angela Valvasori.....419-2923.....thebears@earthlink.net  
 Librarian.....Sheila Frame.....739-0682.....snframe@aol.com  
 Newsletter Editor.....Ron Ahle.....419-2923.....thebears@earthlink.net  
 Program.....Sue Shrader.....736-9317.....sue\_shrader@mindspring.com  
 Rookie Rockhound .....Open  
 Show.....Michael Montebello.....791-9921.....mauimonte@hotmail.com  
 Sunshine .....Abbie Gates.....799-9279.....2rustygates@att.net  
 Website.....Michael Montebello.....791-9921.....mauimonte@hotmail.com  
 Workshop.....Gary Hert.....794-9362.....gchert@hotmail.com



**CGMS Website**

***Please visit our Website:***

<http://www.cgams.org>

Webmaster: Mike Montebello

**Monthly Meeting**

Except for January, the meetings are held the third Monday of each month at the McKissick Museum's Auditorium, on the USC campus. Socializing and refreshments at 7:00 pm; Meeting at 7:30 pm. Please enter from the Horseshoe entrance.

**Executive Board Meetings:**

Except for January, the meetings are held on the fourth Monday of each month at Grecian Gardens, 2312 Sunset Blvd., and West Columbia. Meal is at 6:30pm. Meeting is at 7:00 pm.

**Rocky Trails  
PO Box 6333  
Columbia, SC 29260**