



Rocky Trails



June 2019

Volume 13 Issue 6



The Newsletter of the Columbia Gem and Mineral Society

EDITOR'S MESSAGE

Greetings,

We have moved our workshop to its new location. This move was the culmination of months of hard work and would not have been possible without the dedication of so many of our members. Please refer to the workshop report in this issue for more information.

On June 8th, club members had a display table at the "Natural History DayRocks" at the State Museum. Members in attendance mingled with museum staff and the general public sharing information and free fossils. Our president brought some of his very fine specimens (museum quality) to display as seen in the picture below.



On a personal note, I wanted to mention how much we will miss Dot Harmon. She was the last surviving charter member of our club and a nicer person you will never meet.

On behalf of Angela and me, we would like to thank the club for honoring us with life time memberships!

Ron Ahle, editor

PS: Be sure and come to this month's meeting to hear Kim Cochran's presentation on Antarctic fossils. This will be a very interesting and timely presentation.

NEXT MEETING

June 17, 2019

PROGRAM:

Kim Cochran Antarctic geology and fossils
He will also bring several samples of minerals and fossils to show and pass around. Kim lives near Atlanta and is a member of the Georgia Mineral Society and several other mineral societies. He is a retired firefighter and had been rock hounding throughout the south for over 50 years.

REFRESHMENTS

Sue Shrader & Susan Bloodworth

DOOR PRIZES

Club

Have supper with Kim Cochran before the meeting. Meet at the Grecian Gardens Restaurant on June 17, at 5:30. The address is 2312 Sunset Blvd. West Columbia, SC 29169.

SUNSHINE

John Narung fell off a ladder and broke his leg in several places, requiring surgery. Call or write him at 207 Weddell St. # 2-A Columbia, SC 29223
tajfinejewelry@gmail.com
(803) 727-7070

Club meetings are at The McKissick Museum at USC. Parking is available beside the museum where Bull St. runs into Pendleton St. See map on page 4. If you are unable to use the front steps of the McKissick Museum, there is an elevator on the ground floor down the hall from the parking lot. If you need to use the elevator call 803-261-9317 to have the door on the street level by the parking lot opened.



Dinosaur bones shimmering with opal reveal a new species

By Ashley Strickland, CNN

(CNN) — A hunt for precious gemstones revealed the first fossil evidence of a dinosaur herd, including a previously undiscovered dinosaur species, in Australia. The new dinosaur fossil was found in an opal mine and has turned into the gem itself, making it the most complete opalized dinosaur skeleton in the world, according to a new study.

The fossils were first discovered in the 1980s by opal miner Bob Foster in the Sheepyard opal field. He took them in a duffle bag to the Australian Museum in Sydney and paleontologists that worked at the museum returned to the site to help him excavate. They uncovered more than 60 fossils in the mine.

They were displayed there for a few years before Foster brought them to the Australian Opal Centre. When the fossils were officially donated by his children to the center in 2015, the scientific research could finally begin.

University of New England, Armidale, Paleontologist Phil Bell realized the fossils must belong to a previously undiscovered dinosaur species. But as he and his colleagues looked at more of the fossils, they realized the bones belonged to more than one dinosaur.

"We initially assumed it was a single skeleton, but when I started looking at some of the bones, I realized that we had four scapulae (shoulder blades) all from different sized animals," Bell said in a statement. "There are about 60 opalized bones from one adult dinosaur, including part of the braincase, and bones from at least another three animals."

The new study detailing the fossils published Monday in the *Journal of Vertebrate Paleontology*.

The new species has been named *Fostoria dhimbangunmal*, the genus as a nod to Bob Foster's discovery of the fossil, and the species name means "sheepyard" in the Yuwaalaraay language, once spoken by people indigenous to New South Wales.

Fostoria was an herbivore that stood on its hind legs and belonged to the same group of dinosaurs as iguanodons. The parts of four *Fostoria* skeletons were found and they include younger dinosaurs as well as larger adults that could have been 16 feet long.

This led the researchers to believe they found a family of dinosaurs or at least a small herd.

"Fostoria has given us the most complete opalized dinosaur skeleton in the world. Partial skeletons of extinct swimming reptiles have been found at other Australian opal fields, but for opalized dinosaurs we generally have only a single bone or tooth, or in rare instances, a few bones," said Jenni Brammall, study author, paleontologist and special projects officer of the Australian Opal Centre. "To recover dozens of bones from the one skeleton is a first."

Opal can be just about any color in the visible spectrum and most of the world's opal is mined from the Australian outback, according to the Australian Opal Centre. The outback has the right geologic recipe for opal to form near the edges of an ancient inland sea. It's also Australia's national gemstone.

Opals form in rock cavities, so essentially when a bone is buried in sand or clay and turns into stone, opal creates a fossil replica of the bone.

There are about 15% to 20% of the bones present in the main Fostoria skeleton, which makes it one of the most complete fossils found in Australia. It's also the 24th species found in Australia.

"The rate of discovery is astounding. On average, there's at least one new dinosaur discovered around the world every week," Bell said. "With more paleontologists and scientists looking further afield than ever before, it's an exciting time for dinosaur lovers everywhere, especially in Australia."



Social Media Helps our Club Stay Social!

Join us on Facebook, our social media outlet, to learn about activities of the club and to share your club-related experiences. From any Facebook page (not Google), you can search for "Columbia Gem and Mineral Society" to access the club page. Once you get there, you can click on "Like" this page and set your preferences for notifications under the "Following" button. Share the CGMS Events and Posts with your friends! Add photos of club-related topics! Use this page to share your rock and lapidary interests. Anyone can post on our page, just keep it gem and mineral relevant (no profanity or off-topic posts please). Enjoy, this is one way members of our club can stay connected. To access our web site, just type "CGMS.ROCKS" in your internet browser or you can search for Columbia Gem and Mineral Society in Google.

The Club's website is: www.cgms.rocks

MEMBERSHIP

2019 dues are overdue. If you have not renewed please contact Sheila Frame immediately because she will be updating the Membership Roster with current members.

In Remembrance of Dot Harmon

It is with much sorrow that we have lost our club's last surviving charter member, Dot Harmon, who passed away Saturday, May 25th. Dot was born November 15, 1926 in Westminster, SC. She attended Walhalla High School and continued her education at Georgia Baptist Hospital School of Nursing. She began her 38 years nursing career in Columbia. Dot and her husband Buzz enjoyed 57 years of marriage.

She is survived by two daughters, Penny Harmon DuBois (Elgin, S.C) and Marsha Harmon (Franklin, N.C.); two grandsons, and four great grandchildren.

Dot was a very nice and gracious person who had many longtime friends. Her and Buzz were great folks to go rock hounding with and had many stories to share with other members. Going to her house was like walking into a museum of antiques, rock and minerals. They were truly great collectors. Dot had an infectious smile and was a joy to be around. She will be missed.

Dot was laid to rest on June 1st at Greenlawn Memorial Park, Serenity Gardens.

CGMS Lapidary Workshop

Call or email Gary Hert at 803-794-9362 or gchert@hotmail.com to use the rock saws and cabbing machines.

Moving - Lease Expires Soon

The lease on the club's lapidary workshop expired at the end of May. Since the Club has not yet located a new workshop, a storage space at Ample Storage has been rented. The storage unit has electricity and is climate controlled. It can be used both as storage and a temporary location for lapidary work until a permanent location is found. Ample Storage is located at 3118 August Rd. in West Columbia.

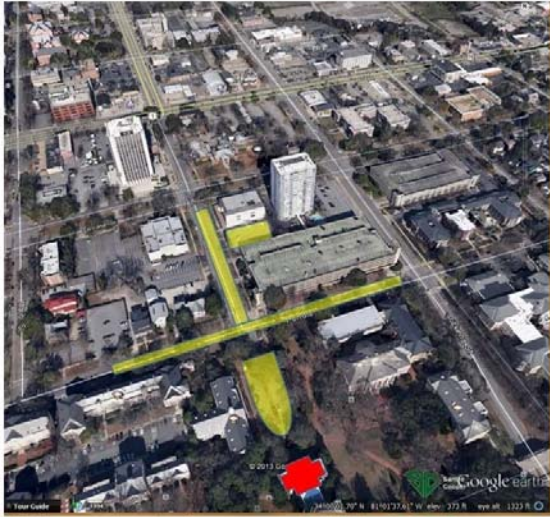
THANKS FOR ALL THE CLUB Members who helped pack up and move. The move was well organized by Sheila Frame & Sharron Sterrett. Everything went smoothly.

New Location Needed

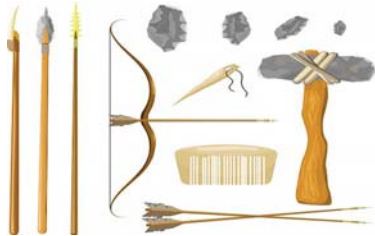
The club is seeking a new location for the workshop. A long term lease or purchase is desired. If you have any suggestions please contact one of the Executive Officers.

Sue sue_shrader@mindspring.com 803-261-917 call or text





Yellow shaded areas = suggested parking **McKissick Museum (in Red)**



[McKissick Museum](#)

McKissick Museum:

www.artsandsciences.sc.edu/mikissickmuseum; phone 803.777.7251; College of Arts and Sciences, University of South Carolina; 816 Bull Street, Columbia, SC 29208

Natural Curiosity: The University of South Carolina and the Evolution of Scientific Inquiry in the Natural World is an ongoing exhibit in the 3rd floor gallery. Explore your own “natural curiosity” in this exhibit that highlights not only the treasures of nature, but also the evolution of the field of natural history. Beginning soon after USC was founded as South Carolina College, professors and students alike collected samples of animal, vegetable, and mineral to study and grow their understanding of the world around them. Today, visitors can still learn from these real and authentic objects or use newly installed touchscreens to dive deeper into the collections and explore the Historic Southern Naturalists. Permanent Exhibition. Exhibition hours are Monday through Friday 8:30 a.m. to 5 p.m. Saturday 11 a.m. to 3 p.m.

[South Carolina State Museum](http://scmuseum.org/events/upcoming-events/) <http://scmuseum.org/events/upcoming-events/>

301 Gervais Street
Columbia, SC 29201
803-898-4921

Second Shift Twosdays: Every Tuesday from 5 – 10 p.m., General admission is 2 for \$10

The museum is open late every Tuesday. Explore four floors of permanent and changing exhibits, planetarium shows, 4D Theater films, night-sky viewing in the Observatory and more.

Boeing Observatory Public Solar Observing Times:

Mon. to Fri: 10 a.m. to 5 p.m.

Saturday: 11 a.m. to 6 p.m.

Sunday: 1 to 5 p.m.

Night Observing: until 10 p.m. during Second Shift Tuesday each week.

GENERAL MEETING MINUTES

May 20, 2019 General Meeting of Columbia Gem and Mineral Society, Inc.

The Columbia Gem and Mineral Society, Inc. held the monthly club meeting on the 3rd Monday, May 23, 2019, at the McKissick Museum at 816 Bull Street, Columbia, SC 29208 on the USC campus.

7:00 **President:** Jimmy Armstrong called the meeting to order. Jimmy thanked Dave and Claire Schuetrum refreshments and welcomed visitors. . Jimmy announced that we had been successful in moving the workshop to Ample Storage where we would set up the workshop. The storage unit has electricity and climate control.

Treasurer: Angela Valvasori said that she had CG&MS patches for sale. **Membership:** Sheila Frame said we now have 96 adults and 18 children as paid members. **Programs:** Sue Shrader said we could have small classes in the workshop. She said she was trying to contact Cameron Walker from Vulcan mines for a program. Sue passed around sign-up sheets for refreshments and door prizes. She said the club would be setting up at the Natural History Day at the South Carolina State Museum on June 8. **Sunshine:** Abbie Gates said John Narang had fallen from a ladder and seriously hurt his leg. John would be out of commission for 3 months. Terry Tokaz said that Dot Harmon was now at Palmetto in Parklane.

New Business: Tom Daniel said there was a Faceting Guild Competition for which the deadline is in August, and he would be entering as a novice. **New Business:** Jimmy Armstrong announced that we now had 2 new Life Members: Ron Ahle and Angela Valvasori. Both Ron and Angela have gone beyond expectations with their contributions to the club. Both have given great efforts and time in giving presentations, researching and preparing of rock specimens for auctions and for shows, assisting with the workshop, and serving as officers countless times over the years.



Since there was no old or new business, members voted to adjourn to do door prizes and begin the program.

Respectfully submitted by

EXECUTIVE MEETING MINUTES

May 23, 2019 Board Meeting of Columbia Gem and Mineral Society, Inc.

The Columbia Gem and Mineral Society met on the 4th Monday, May 23, 2019, at Grecian Gardens at 2312 Sunset Blvd., West Columbia, SC 29169. Attending: Ron Ahle, Angela Valvasori, Sheila Frame, Jimmy Armstrong, Jim Cobb, Dan Elswick, Sue Shrader, and Susan Bloodworth. At 7:00 **President:** Jimmy Armstrong called the meeting to order and thanked all for coming and thanked all for helping with moving the workshop. Jimmy then addressed a security issue with email and said not to respond to anyone using his name on email.

Treasurer: Angela Valvasori said she had scheduled a date for the electricity to be cut off at the workshop and had paid for the last grass cutting at the workshop. **Membership:** Sheila Frame said the club now has 114 paid members. **Programs:** Sue Shrader acknowledged Ron Ahle's outstanding presentation on Rock Art, and Jimmy Armstrong thanked Ron for the presentation. Sue said she was working on future programs for meetings: Kim Cochran, Vulcan Mines, Congaree National Park, State Archeology, and Congaree Lunch and Learn. Jimmy Armstrong said that Kim Watkins had asked him to do a presentation on fossils. Jimmy said he would also need someone to assist by talking about Rocks and Minerals. **Field Trip:** Board Members said that the club had many people who could assist with ideas for planning future field trips. The Magma Rock Round-Up would be an excellent place to network with mine owners who would allow digs since many mines would be open during the Round-Up. The Magma Rock Round-Up is included in the Rocky Trails and would be in late July. **Sunshine:** John Narang fell from a ladder and seriously hurt his leg. Sue Shrader's son, Scott, had gotten married, and Mike Montebello's daughter had gotten married. Jimmy Armstrong informed the Board that Betty Sawyer, Catherine Sawyer's mother, is very ill. Both are members of the Club.

Workshop: Gary Hert said he would assess to see what needed to be done to set up lapidary equipment in the storage unit. Gary also said he had put up a large building in his backyard and presented the option to set up saw and cabochon machines there so he could better facilitate members. Gary also verified that the purchase of geodes for the show had been approved by the board. Sue Shrader then reminded all that the last day to go to the old workshop would be May 31, and keys would need to be returned. Sue said she would be doing one last workday to get a few remaining items, remove the curtains, and pack up and store remaining rock specimens. Gary Hert said that a future option for a permanent workshop could be a building from Graceland Homes. Jim Cobb said we could purchase a piece of property, and Ron Ahle said we should continue to look for a permanent solution for a workshop.

Old Business: Sue Shrader said the South Carolina State Museum had invited the CG&MS to set up an exhibit for the Natural History Day on June 8, 2019 at the museum. **New Business:** Angela Valvasori expressed a concern about only one member being able to update information on the Club's Webpage. Jimmy said he would discuss this issue with Mike Montebello. Dan Elswick said that the same issue would also be a concern for the Facebook Page. Dan said he had added Sue Shrader as editor for Facebook. Since there was no additional business, board members voted to adjourn.

Respectfully submitted by
Susan Bloodworth



Dixie Mineral Council Field Trips

The Southeast Federation of Mineralogical Societies, Inc



The Friendly Federation - Founded in 1976 to serve
DMC Program of the SFMS Field Trip Committee
Copyright © All rights reserved.

An Official Field Trip of the Western South Carolina Gem and Mineral Society Society
(Greenville, SC) (HOST)

An Official Field Trip of the Columbia Gem and Mineral Society

Friday, July 19, 2019
9:00 AM to 6:00 PM Eastern Time
Diamond Hill Quartz Mine
Abbeville, SC
Fee Site

TRIP: The mine is an open pit mine with many spoil piles to dig through. Our club has been coming to the mine for over 30 years

COLLECTING: The main mineral is quartz crystals in the form of amethyst, smoky, skeletal, clear, and milky. More rare minerals include beryl and cacoxenite.

BRING: Your choice of hammers, digging tools, screens, and gloves. Bring sunscreen, picnic lunch, snacks, and plenty to drink.

TERRAIN: Disturbed earth with some pits. Use reasonable precautions

FEE: \$15 group rate if you state that you are with the Dixie Mineral Council group. \$10 for those 65 or over or between 13 to 17 years of age. \$5 for 12 years and under.

CHILDREN (MAYBE): Allowed with adult supervision.

PETS (NO): Allowed on leashes

FACILITIES: Porta-potties and picnic tables. No running water other than the creek.

ADDITIONAL INFORMATION: Check the website at diamondhillmine.com.

DIRECTIONS AND WHERE TO MEET:

Address: 50-99 Diamond Mine Rd., Abbeville, SC
34°16'13.5"N 82°34'28.8"W

From Interstate 85 travel south on SC 28 through Anderson, SC and follow it to SC 284. Turn right on SC 284. Drive to Diamond Mine Road. Turn onto Diamond Mine Road and look for a very dug up area with a lot of cars.

CONTACT: Tim Barton at (828)577-4505 or Bill Wetzel at wwetz14@gmail.com or (864)404-0025



Amethyst plate

An Official Field Trip of the Henderson County Gem and Mineral Society (Hendersonville, NC) (HOST)
An Official Field Trip of the (enter your associated club's name here)

Friday, June 21, 2019
Meet at 9:00 a.m. Eastern Time
At site from 10:00 a.m. to 5 p.m.
Thermal City Gold Mine
5240 US 221 North Highway, Union Mills, NC 28167
Limit 35 People
Registration Required
Fee: \$10 per person site fee

TRIP: A unique experience, family-friendly and hosted by people who are real prospectors! Anyone who wants to pan or prospect for gold is welcome. Here you can learn about and enjoy the tradition and history of gold mining in North Carolina. Lots of other NC gems and minerals to find, see or buy. Camping available and a shop to buy rockhounding equipment.

COLLECTING: The material from the site or river bed will be easy to work with, and we're hoping for a nice, hot day to enjoy the water. Comfortable, covered flume areas for sluicing. Other possible finds common to this area of NC include: moonstone, emerald, citrine, aventurine, smoky quartz, tourmaline, ruby, etc. You will have assistance if needed to identify your finds.

BRING: Screens and pans are available with your \$10 day fee, but for river prospecting please bring your own equipment. A sluice of your own can be set up in the river. If you're more experienced or want a LOT of material, the site has 4 high bankers they will load, or bring your own equipment and save \$10 a load. Cost is \$60 per load or \$70 for screened material when using site's equipment. Share the cost with a few friends!

REQUIREMENTS: Because this site is public and set up for all ages to enjoy, just the basic requirements for your particular group's safety and comfort. We should always have beverages/water, sunscreen/hats, sturdy shoes and the like but no hiking is required. In the water, use safety and move carefully. We will have a first-aid kit and some bottled water.

SPECIAL CONDITIONS: If you choose to pan for gold in the river, you must use your own equipment. Check the website for more options. Fee: \$10.00 per person for the day.

REGISTRATION: Trip size will be limited to 35 persons. Please register so we have a head-count and can contact anyone on a wait list. Email: Kathryn Hackett Fields at Kahfields@Reagan.com, subject line: HCGMS Field Trip. If you can "ride share" one or more from the meeting place to the site, please include that. Can also register at HCGMS monthly Club meeting, May 20 or June 17 (if not full by then). The Thermal City Gold Mine website is your best source for comprehensive information, and for camping details/costs. You can also call Tim Barton, 828-577-4505.

CHILDREN (Yes): The site encourages "ages 3 to 93" and adult supervision appropriate to ages. The flume is covered allowing fun rain or shine. **No Pets**

FACILITIES: Facilities are adequate for a group, and there is a museum and rock shop as well as a wide variety of equipment for purchase. Picnic tables and beautiful surroundings.

ADDITIONAL INFORMATION: The Club will bring bottled water, some ice and morning snacks along with a few folding tables and coolers for lunch bags. Bring your lunch, and enjoy the many area offerings after your day.

DIRECTIONS AND WHERE TO MEET: Our meeting place and registration check-off will be the Ingles at 550 Rt. 9 in Black Mtn. area. Look for green Subaru Forrester with a balloon to find the spot. This location is about 30 miles from the site. Ride-sharing can be done at this point to have less vehicles on-site.

Take the NC-9 exit # 64 off of I-40 East (Montreat/Black Mtn.), go .24 miles then turn right onto NC Hwy. 9/Black Mtn., up another .2 miles and see Ingles on the right. We will wait there from 9 - 9:25 a.m. before leaving for the site by 9:30. Thermal City Gold Mine is about another 21 miles down I-40 East, Exit 85, then US 221 South for 8.76 mi.

CONTACT: Tim Barton may be contacted for general information and meeting place location at 828-577-4505. Day-of-trip contact phone is 828-231-3555, text or call Kathryn, (Trip Registrant)

16th Annual Western North Carolina Rockhound Roundup July 21st - 28th, 2019

The largest annual Rockhound gathering in North Carolina!

Hosted by: M.A.G.M.A., the Mountain Area Gem and Mineral Association

This event will be based at Camp Stephens. This property is located just outside the city of Asheville off of Interstate 26. The camp is just 3.5 miles from the Interstate but located in a secluded wooded area on the French Broad River. There is room for many RV's and tent campers. There is a large indoor pavilion with two bathrooms, two showers (note that the showers and bathrooms have been renovated and are in excellent working condition now) a kitchen, electricity and water for the outside campers and inside the pavilion. There are large campfire pits for use by campers. I will also have two porta potties' on site for extra bathrooms. There will be a dumpster on site for all garbage (be sure to bag your garbage before putting it in the dumpster). Campers will be able to swim, fish, canoe, snorkel, etc. in the river. The camp area is completely wooded so there is plenty of shade. We will be allowed to use the numerous tables provided in the pavilion to set up and swap/sale our rocks and minerals. Three miles from the camp are numerous gas stations, a mall, restaurants, motels/hotels and more. Campers can arrive anytime Sunday the 21st to set up camp and get ready for the week's events. Camping on the Camp Stephens property is included in the cost.

Agenda: We have coordinated this event to coincide with the numerous gem and mineral shows that are taking place in Franklin, North Carolina the same week. We will visit a variety of mines for collecting. There will be directions to the mines given to all attendees, campers and participants can visit any of the mines listed here, any day of the roundup as many times as they like. I will have release

forms and take payment for some mines at the camp and will provide instructions as to where to pay for some mines.

Mines we will have full access to during the week of the roundup:

Crabtree Emerald Mine in Mitchell County, NC. Fee: \$15 for those camping at the roundup, \$20 for all others. Release forms and payment will be collected at the camp prior to the dig. Directions will be provided at camp. **Sinkhole Mine** in Mitchell County, NC. No fee, directions will be provided at camp. **Little Pine Garnet Mine** in Madison County, NC. Fee: \$25 per person. Forms and payment are handled at the office of the Sandy Bottom Trail Rides before proceeding to the mine. Directions will be provided at camp. **Sharpes Emerald Prospect** in Hiddenite, NC. Fee \$20 for those camping at the roundup, \$25 for all others. Release forms and payment will be collected at the camp prior to the dig. Directions will be provided at camp.

We will be visiting the numerous gem and mineral shows in Franklin, NC daily. There will be demonstrations on wire wrap, flint knapping, cabochon making, etc. Display tables will be available to show off your favorite specimens. The members have a cookout in the evening and a big campfire. There will be tables setup throughout the week for people to sell and trade their rocks and minerals, gems and jewelry.

Saturday the 27th; THE FEAST! Everyone bring a dish or desert and something to drink. If you need to cook something for the meal, you should start cooking around 1:00 to be ready to eat around 3:00.

Fee for Roundup: \$40.00 per person. Vendors, \$60.00. This covers all 7 days of the Roundup. Kids 12 and under are free. If you plan to only attend a few of the days, the cost will be \$10.00 per day.

[Kyanite Field Trip Dig - June 15-16](#)

Come dig your own beautiful blue Kyanite blades right out of the ground just like the old time prospectors! Our Justice Kyanite deposit is located on over 100 acres of Fantasia's privately owned land. All mining at this dig will be done with hand tools only, and you will need to bring your own shovels, screens, or any other tools you would like to use. Enjoy the feeling of being the first person to see these kyanite blades since Mother Nature formed them in the Earth. There is a small stream on the property with water you can use to rinse the stones you dig to help see the beautiful kyanite right in the matrix. Keep everything you dig!

This is going to be our ONLY public dig at this mine for all of 2019, so don't miss this amazing opportunity to dig your own spectacular blue kyanite blades!

Location: 599 Browntown Rd, Prospect VA 23960

Dates: June 15-16, 2019

Times: 10 AM until dark each day

Lodging: Hotels are available in Farmville, VA or in Appomattox, VA. In addition you may camp out on our 101+ acres of kyanite rich land at no extra charge during this dig (motor homes and tents welcome!) If you want to start a camp fire or bon fire on our property, cook hot dogs, marshmallows, or just relax at night you are welcome to do so but MUST have a working fire extinguisher for safety.

Amenities: The land is completely undeveloped and there is NO running water, NO bathrooms, or any other modern conveniences on site.

Free Tailgate Rock Swap: If you are looking to sell any stones feel free to bring them and you are

welcome to set up shop out of your trunk or bring a table and set up anywhere you like. We don't charge for this and hope people will just enjoy seeing what other rockhounds have available. We will be bringing some stones from our other mines across the USA and Mexico which will also be for sale, and look forward to seeing all the specimens others bring from mines around the world.

Cost per rockhound:

Adults - Only \$10.00 per adult for both days

Tweens and Teens (Ages 10-17) - only \$5.00 for both days

Our younger rockhounds under 10 years old dig for free!

To help us get an advance head count please RSVP by email to digs@fantasiamining.com or by phone at 330-400-8741 if you know for certain you will be attending. The RSVP is NOT required and if you aren't sure you can make it until the day of the dig feel free to just show up! This RSVP request is just a courtesy to us so we know around how many people to expect.

We ask that everyone cleans up after themselves and that no litter is left on the property. As long as the land is respected, no one disturbs the neighbors, or causes any issues, we will be doing this every summer! While there is nothing unsafe we are aware of on the property, due to legal and insurance regulations everyone will be required to sign a liability waiver when first arriving.

We hope to see you there!

AREA SHOWS

June 21-23—Gastonia, NC: Show; Gaston Gem, Mineral and Faceters Club; Absher Flowers VFW Post 9337, 3250 W. Franklin Blvd (HWY 74); Premiere Edition of our Summer Gemboree is taking place with indoor and outdoor experiences in crystals, gem and mineral specimens, fossils, geodes and jewelry, and a sluice on site; contact Robert Winstanley, (704) 577-3391; Email: machine66man@gmail.com; Website: www.facebook.com/groups/gastongems

July 26-28... Franklin, NC: Macon County Gemboree; Gem & Mineral Society of Franklin NC, Robert C. Carpenter Community Building; 1288 Georgia Road; contact Linda Harbuck(800)-336-7829; e-mail: lindah@franklin-chamber.com; www.visitfranklinnc.com

July 27-August 4, 2019: Spruce Pine, NC: 35nd Annual Grassy Creek Gem & Mineral Show Organized by: Parkway Fire and Rescue Department Parkway Fire and Rescue (Parkway Fairgrounds 136 Majestic View, Spruce Pine, North Carolina 28777) Contact Us: grassycreekgemshow@gmail.com

Launch of American Geode's gem, mineral, fossil show page!

American Geode's gem, mineral, and fossil show page will be #1 on Google, Yahoo, when people search for gem, mineral, fossil shows. No log-in, signing up, or passwords. American Geode wants EVERYBODY, from academics, to college students, to interior design professionals to come to your shows and to buy at your shows. American Geode works with more diverse crowd than just serious mineral collectors.

Even if your club does not host shows, please visit American Geode for shows to visit when you are traveling on vacation or traveling for business!

<http://www.americangeode.com/shows/>

The Columbia Gem and Mineral Society is an organization of persons associated together to promote popular interest in and to provide means for the exchange of knowledge of the Earth Sciences – Geology, Mineralogy, and Paleontology – and of the related Arts – Lapidary and other. The Society is a member of the Southeast Federation Mineralogical Societies Inc. and affiliates of the American Federation of Mineralogical Society Inc.

2019 OFFICERS and COMMITTEE CHAIRPERSONS

EXECUTIVE COMMITTEE

President.....Jimmie Armstrong...(803) 438-6000.....rvrdvr29078@gmail.com
 Vice President.....Ron Ahle.....419-2923.....the bears@earthlink.net
 Treasurer.....Angela Valvasori.....419-2923.....the bears@earthlink.net
 Secretary.....Susan Bloodworth.....604-1045.....susanbloodworth374@att.net

COMMITTEE

MembershipSheila Frame.....739-0682.....ibframed@gmail.com
 Auctioneer.....Benira Sutphin.....315-5250.....benira@bellsouth.net
 Club Liaison.....Jim Cobb.....794-0045.....jocobb3@bellsouth.net
 Faceting Guild.....Fred Meetze.....345-7463.....fredfacetor@gmail.com
 Facebook.....Dan Elswick.....727-9186.....elswickdan@yahoo.com
 Field Trip.....David Hanes.....(336) 442-0639.....davehanes@aol.com
 Historian.....Angela Valvasori.....419-2923.....the bears@earthlink.net
 Librarian.....Sheila Frame.....739-0682.....snframe@aol.com
 Newsletter Editor.....Ron Ahle.....419-2923.....thebears@earthlink.net
 Program.....Sue Shrader.....736-9317.....sue_shrader@mindspring.com
 Rookie RockhoundOpen
 Show.....Michael Montebello.....791-9921.....mauimonte@hotmail.com
 SunshineAbbie Gates.....799-9279.....fossilwoman43@gmail.com
 Website.....Michael Montebello.....791-9921.....mauimonte@hotmail.com
 Workshop.....Gary Hert.....794-9362.....gchert@hotmail.com





CGMS Website

Please visit our Website:

<http://www.cgams.org>

Webmaster: Mike Montebello

Monthly Meeting

Except for January, the meetings are held the third Monday of each month at the McKissick Museum's Auditorium, on the USC campus. Socializing and refreshments at 7:00 pm; Meeting at 7:30 pm. Please enter from the Horseshoe entrance.

Executive Board Meetings:

Except for January, the meetings are held on the fourth Monday of each month at Grecian Gardens, 2312 Sunset Blvd., and West Columbia. Meal is at 6:30 pm. Meeting is at 7:00 pm.

**Rocky Trails
PO Box 6333
Columbia, SC 29260**