



Rocky Trails



July 2017

Volume 11 Issue 7



The Newsletter of the Columbia Gem and Mineral Society

EDITOR'S MESSAGE

Dear Members,

We had a very enjoyable drop-in at the workshop on July 12th. A dozen or so members attended and brought food choices that were diverse and delicious. Several members used the saws and the cabbing machines. Still others reminisced about days gone by reviewing old photos and documents about the club's history. Many of the members present have been in the club for more than twenty years and had lots of memories to share. This is one of the great experiences of belonging to a club such as ours where long time friendships are fostered and great experiences are shared.

The value of the workshop was once again brought into view. Gery assisted folks with operation of machines and tools that are available for use by our members. Just as a reminder, we have everything you need to make beautiful cabochons, cut geodes, or cut slabs for all your crafting projects. We have an 18" slab cutter, saws for small jobs, grinding and polishing wheels for cabbing, and other lapidary equipment. I encourage members to take advantage of the opportunity to enjoy the shop

Until next time,
Ron Ahle

PS. Be sure to make your plans for the eclipse. Many great activities are being planned all over the Columbia area.

NEXT MEETING

July 17, 2017

PROGRAM:

Jimmy Armstrong and Katherine Sawyer will bring some of fossils and artifacts they have found this year diving in the coastal South Carolina rivers. Members; Bring anything you have found, made or bought for members to look at.

REFRESHMENTS

Alan & Michelle Kozuske

DOOR PRIZE

Sue Shrader

Sunshine

Susan Bloodworth will have thyroid surgery on June 5 in Columbia.

Benira Sutphin son Chase and wife had a 4th daughter!

WORKSHOP

If you would like to use the workshop, call or email Gary Hert gchert@hotmail.com 803-794-9362 to use the rock saws and cabbing machines

Club meetings are at The McKissick Museum at USC. Parking is available beside the museum where Bull St. runs into Pendleton St. See map on page 10. If you are unable to use the front steps of the McKissick Museum, there is an elevator on the ground floor down the hall from the parking lot. If you need to use the elevator call 803-261-9317 to have the door on the street level by the parking lot opened.

GENERAL MEETING MINUTES

General Meeting of Columbia Gem and Mineral Society, Inc., May 15, 2017

The Columbia Gem and Mineral Society, Inc. held the monthly club meeting on the 3rd Monday, May 15, 2017, at the McKissick Museum at 816 Bull Street, Columbia, SC 29208 on the USC campus. Vice President Ron Ahle called the meeting to order at 7:34 p.m. **Refreshments** were supplied by Don and Pat Burger. **Door prizes** were supplied by Fred Meetze.

Chair Reports: Susan Bloodworth reported that the **Membership** had 96 adults and 16 children. Sue Shrader reported that the June **Program** would be given by Ron Ahle on Glaciers of Alaska. The **Workshop** will be open on May 23rd from 5:00 to 7:30 for a drop-in. Bring dinner for yourself. Bring a project you have been working on or see Gary and use the machines. Ron Ahle requested that all information for the **Newsletter** be set by the first of the month. Ron asked members to send items to share. Look in the Rocky Trails for **Field Trip** information. Abbie Gates sadly reported that Fred and Jennie Meetze son, Bert, had unexpectedly passed away from a heart attack. Details for the service were unavailable. Abbie sent a card to Jack Seech in the Sumter Heath and Rehab. Jean Geer is stronger but still needs oxygen. Dan Elswick asked that everyone "like" our **Facebook** page and share information.

Old Business & New Business: None.

Program: USC Jewelry Instructor, Mana Hewitt, gave the program and showed examples of her work.
Door Prizes: Door Prize winners were Isabelle Wentzel, Linda Gandy, Daniel Brown, Madelyn Wentzel, Olivia Brown, Sharon Sterrett, Gary Cadel, Susan Richardson, Sue Shrader and Angela Valvasori.

General Meeting of Columbia Gem and Mineral Society, Inc., June 20, 2017

The Columbia Gem and Mineral Society, Inc. held the monthly club meeting on the 3rd Monday, June 20, 2017, at the McKissick Museum at 816 Bull Street, Columbia, SC 29208 on the USC campus. President Jimmy Armstrong called the meeting to order at 7:30 p.m. **Refreshments** were supplied by Sue Shrader and Sharon Sterrett. **Door prizes** were supplied by Jimmy Armstrong. **Visitors** were Dave Schuetrum.

Please note: *The August General Meeting on the 21st will be cancelled because of the eclipse.*

Chair Reports: The **Workshop** will be open on July 11th from 5:00 to 7:30 for a drop-in. Bring dinner for yourself. Bring a project you have been working on or see Gary and use the machines. Sue Shrader reported that the July **Program** would be given by Dave Cicimurri on extinct marine creatures. Dan Elswick asked that everyone "like" our **Facebook** page and share information. Look in the Rocky Trails for **Field Trip** information. Fred Meetze reported that the **Faceting Guild** will be closed for the summer.

Old Business & New Business: None.

Program: Ron Ahle gave a program on "Glaciers of Alaska."
Door Prizes: Door Prize winners were Sue Shrader, Ron Ahle, Dave Schuetrum, Olivia Brown, Martha Blackmon, Catherine Sawyer, Betty Sawyer, Shellie Newell, Curtis Blackmon, Dan Brown, Fred Meetze, Barbara Fenstermacher and Terri Tokaz.

Submitted by Sharon Sterrett

The Columbia Gem & Mineral Society August 21 Meeting is canceled due to the Total Solar Eclipse

On Aug. 21, 2017, a total solar eclipse will be visible from coast to coast. America will see its first total solar eclipse since 1979. The next one won't happen until April 2024.

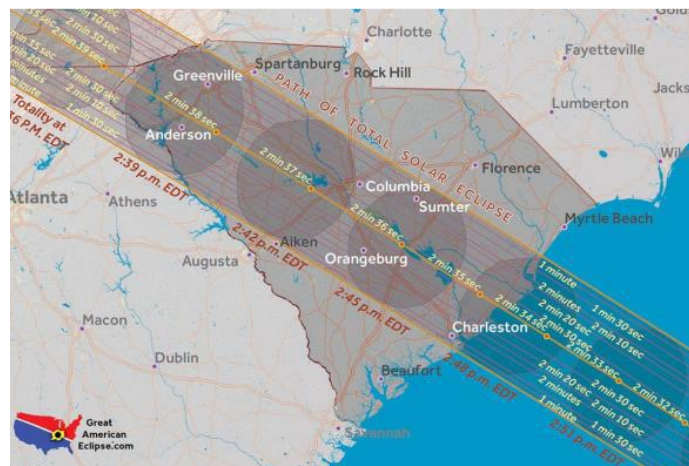
On Aug. 21, 2017, a total solar eclipse will be visible from coast to coast, according to [NASA](#). It will be the first total eclipse visible only in the USA since the country was founded in 1776. It will also be the first total solar eclipse to sweep across the entire country in 99 years, NASA says. And not since 1970 has there been an opportunity to see a total solar eclipse in such easily accessible and widespread areas of the nation. A total solar eclipse occurs when the moon gets in the way of the sun, turning day to an eerie twilight. Barring pesky clouds, more Americans should be able to see this one than ever before as it passes through 12 states. The eclipse will start on the West Coast in Oregon and trace a 67-mile wide path east across the country, finally exiting the East Coast in South Carolina. At any given location, the total eclipse will last for around 2 or 3 minutes.

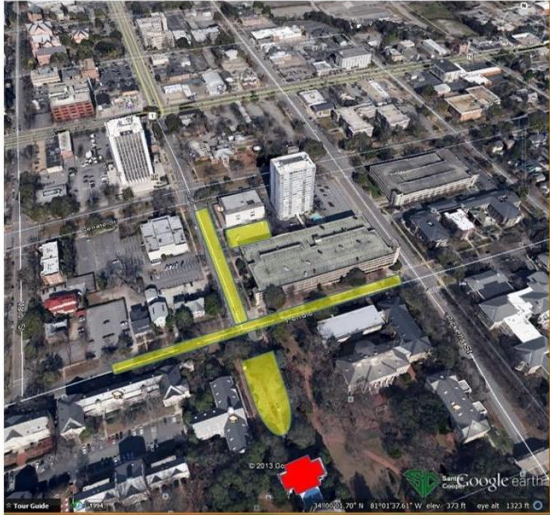
It will pass directly over cities such as Salem, Ore., Idaho Falls, Lincoln, Neb., Kansas City, Nashville, and **Columbia and Charleston, S.C.** Places within a one- or two-hour drive of the eclipse include Portland, Ore., Boise, Cheyenne, Rapid City, Omaha, Neb., Topeka, St. Louis, Louisville, Knoxville, Chattanooga, Atlanta and Charlotte. At 2:41 p.m. viewers who have gathered in the Greater Columbia, S.C., area will experience the longest period of 100% total eclipse for a metro area on the entire East Coast of the United States — ranging from 2 minutes and 30 seconds to 2 minutes and 36 seconds of total darkness.

An estimated 12 million people live within the path of totality, according to [Space.com](#). The number of people within just one day's drive of the totality zone is around 200 million.

And in Columbia, S.C., the city is expecting and preparing for visitors to come to the region due to its unique location in the path and "to celebrate and witness the spectacle of totality," said Merritt McNeely of the [South Carolina State Museum](#)

<http://www.usatoday.com/story/tech/sciencefair/2016/08/21/total-solar-eclipse-august-2017/88514886/>





Yellow shaded areas = suggested parking **McKissick Museum (in Red)**

[McKissick Museum](#)

McKissick Museum:

www.artsandsciences.sc.edu/mikissickmuseum; phone 803.777.7251; College of Arts and Sciences, University of South Carolina; 816 Bull Street, Columbia, SC 29208

Natural Curiosity: The University of South Carolina and the Evolution of Scientific Inquiry in the Natural World is an ongoing exhibit in the 3rd floor gallery. Humans possess a fascination with the natural world around them. From the 32,000-year-old cave paintings of horses in France to the giraffe stickers today's children paste into their activity books, we can see that humans are eager to see, touch, collect, and understand nature. Ongoing, 3rd floor gallery.

Chris CiCiMurri Curator of Natural Science. 803-777-2823; cicimurri@sc.edu

EXECUTIVE MEETING MINUTES

Board Meeting of Columbia Gem and Mineral Society, Inc. May 22, 2017

The Columbia Gem and Mineral Society met on the 4th Monday, May 22, 2017, at Grecian Gardens at 2312 Sunset Blvd., West Columbia, SC 29169. Members and officers present were Angela Valvasori, Sue Shrader, Jimmy Armstrong, Ron Ahle, Jim Cobb, Dan Elswick, Gary Hert Susan Bloodworth and Sharon Sterrett. President Jimmy Armstrong called the meeting to order at 6:57.

Committee and Officer Reports: Susan Bloodworth reported she had received three new **Memberships** since last Monday. Under the **Show** report Susan Bloodworth reported that small items were needed for the salted mine. If adequate donations were not received the club might need to buy material. Gary Hert reported that geodes and saw oil was needed. Sue Shrader made a motion to allow a budget of \$2000.00 for geodes. It was seconded by Dan Elswick. Under discussion Gary said he would consider new and past dealers with a goal of 85% hollow geodes. The motion passed. There will be a get-together at the **Workshop** on July 11. **Field Trips** were noted in the Rocky Trails. Dan Elswick Reported 157 "likes" on **Facebook**. He requested cover photos and asked that members make comments to bring club information back up to the top. Under **Sunshine** Sue Shrader reported on Bert Meetze's, Fred and Jennie Meetze's son's, funeral. Ron Ahle requested members send articles for the **Rocky Trails**.

Old Business: The shop inventory was discussed.

New Business: None.

The meeting was adjourned at 8:34 by a motion made by Ron Ahle, seconded by Jim Cobb and carried by the board.

Submitted by Sharon Sterrett

EXECUTIVE MEETING MINUTESJune 29, 2017 Board Meeting of Columbia Gem and Mineral Society, Inc.

The Columbia Gem and Mineral Society met on the 4th Monday, June 29, 2017, at Grecian Gardens at 2312 Sunset Blvd., West Columbia, SC 29169. Members and officers present were Jimmy Armstrong, Berina Suphin, Jim Cobb, Dan Elswick, Sue Shrader, Ron Ahle, Angela Valvasori, and Susan Bloodworth. President Jimmy Armstrong called the meeting to order at 7:00.

Committee and Officer Reports: Sue Shrader said the **July program** will be a show & tell & sale. Dace CiCiMurri will give a talk later. Jim Spireck will also give a talk on The Hunley later. Dan Elswick is keeping up with the club **Facebook** page. He encouraged everyone to make comments and provide him with club information. Sue Shrader gave a **sunshine report** noting that Susan Bloodworth is recovering from thyroid surgery. Benira Sutphin is a grandmother again with a new granddaughter. reported she will have a **Glass Fusing Class** in May. Gary Hert is available to be at the **workshop** on Sunday, Monday and Tuesday Call him to set up a time. Gary suggested to charge an annual fee to use the workshop instead of an hourly rate. This will be discussed at the general meeting to get some feedback. Gary stated cab machines need new belts. Club liaison, Jim Cobb, has been attending the Aiken Club meetings. **Historian**, Angela Valvasori, is working on the 50-year show anniversary history of the club. She has several old photos and CDs. She will present this at the November meeting. A dissuasion took place on how to present it at the show. She photographed some slides on a light table. She will fill a display case with club history items and photos at the show.

Old Business: A new website was disused since the old one had been hacked and unusable. Mike Montebello and his daughter Stacey Montebello will work on a new one and keep it maintained. \$300.00 was approved to get it started plus additional fees to maintain it each year. Sue Shrader made a motion to approve this amount. Angela Valvasari 2nd. Motion passed. Need more written info from on new website from Mike. The Federation Raffle was discussed. See Sue Shrader for tickets. Gary Hert bought geodes for the show. He will pick them up at the wholesale show the end of July in Franklin, NC. Jimmy Armstrong, Ron Ahle and Sue Shrader made a plan to inventory the **Workshop** machinery and tools. Angela said she cannot use her lapidary scholarship she won in 2015 for working at the show. Sue Shrader will look up the alternate winner. Benira Sutphin said attendance is down at William Holland during Federation weeks for this year. She stressed what a great deal it is to attend. The meeting was adjourned by a motion made by Benira Sutphin, seconded by Jim Cobb and carried by the board.

Respectfully submitted by
Sue Shrader



Dixie Mineral Council Field Trips

The Southeast Federation of Mineralogical Societies, Inc



The Friendly Federation - Founded in 1976 to serve
DMC Program of the SFMS Field Trip Committee
Copyright © All rights reserved.

An Official Field Trip of the Gaston Gem Mineral and Faceter's Club (Gastonia, NC) (HOST)
An Official Field Trip of the Columbia Gem & Mineral Club

Saturday, August 26, 2017
8:30AM - 4PM Eastern
Propst Farm
Lincoln County, NC
Fee: \$25 per person

TRIP: The property recently reopened after several months following the passing of Mrs. Propst. The property has been producing corundum, since the 1960's. Digging will take place in front and behind the barn as well as other possible areas designated by the current owner, Ronald Lineberger.

COLLECTING: Some large and unusual corundum specimens have been coming out of the ground recently including a large Kyanite included specimen and a small clear ruby. Good specimens of magnetite and quartz crystals are occasionally found. The ground is hard packed red clay. Digging can be easy or moderately hard depending on the location and depth of the hole you dig.

BRING: Long and short shovels and small or large buckets minimum. 1 inch and half inch classifiers, small picks, tarps and probing tools may come in handy. Bring water or soft drinks and snacks. An extra change of clothes may be needed as the ground is red clay.

FEE: \$25 per person

REQUIREMENTS: All collectors will be required to sign a permission / liability form and pay \$25 before setting up to dig. Digging is allowed in the designated areas only. All holes **MUST** be filled in before you leave the property.

SPECIAL CONDITIONS: Parking is on the grass near the dig area.

CHILDREN: Allowed with parental supervision.

PETS: Allowed on leash only.

FACILITIES: There is no toilet but there is a service station with facilities at the exit of HWY 321 and Startown Road.

ADDITIONAL INFORMATION:

Address: Propst Farm - 3668 Startown Road, Maiden NC 28650

Lodging: Rooms are available in nearby Lincolnton NC or Hickory NC.

DIRECTIONS AND WHERE TO MEET:

About 13 miles south of I-40 via US321 and Startown Road or About 26 miles north of I-85 via US321 and Startown Road. (Startown road intersects 321 and the Propst Farm is approximately 3 miles south of NC highway US 321). Dig is on residential land, pull in between 2 brick houses - We will have a sign on road where to turn in.

AREA SHOWS

July 27 to 30, 2017 Franklin, NC Gem & Lapidary Wholesalers Wholesale Show 10AM-6PM Daily; 10AM-3PM Sunday Watauga Festival Center 6295 Sylva Road Franklin , NC Wholesale Only Shows – Open Only to the Trade Valid Business License OR Tax Certificate OR Sales and Use Tax Permit in Gem or Jewelry Related Business is Required. To register go to...<http://glwshows.com/shows/072017-franklin-nc/> 601.879.8832

July 26-30— Franklin, NC Annual show; Damian Belgali, Echo Valley Show Place (across fr GLW); 6456 Sylva Rd (across from GLW); Wed. 9-5, Thu. 9-5, Fri. 9-5, Sun. 9-4; Free Admission; wholesale and retail dealers from all around the world; a variety of minerals, rough rock, fossil and gemstones; open to the public ; contact Damian Belgali, (678)-852-8273; e-mail: mbellpoint@gmail.com

July 30-August 6—Spruce Pine, NC: Annual show; Parkway Fire and Rescue, Parkway Fire and Rescue new gem show field; 136 Majestic View; Daily 10-6; Free Admission; Donna Collis, 136 Majestic View, Spruce Pine, NC 28777, (828)-765-5519; e-mail: collisdonna@yahoo.com; Web site: <http://www.grassycreekgemshow.org>

August 11-13—Dalton, GA: Annual show; Dalton Gem and Mineral Jewelry Show, Northwest Georgia Trade and Convention Center; 2211 Dug Gap Battle Rd.; Fri. 2-7, Sat. 10-6, Sun. 11-5; Adults \$4, Children free under 17; Join us for the 26th Annual Dalton Gem and Mineral Jewelry Show! contact Mohammad Tahir, (706)-537-8960; tahir1269@yahoo.com; <https://www.facebook.com/pg/daltongemandmineraljewelryshow>

November 17 -19; Columbia, SC 50th Annual Gem Mineral & Jewelry Show ...Jamil Temple, 206 Jamil Rd. Columbia, SC 29210; Adults \$5.00, 16 & under Free ; All military free 803-736-9317 ashrader@mindspring.com

The Columbia Gem and Mineral Society is an organization of persons associated together to promote popular interest in and to provide means for the exchange of knowledge of the Earth Sciences – Geology, Mineralogy, and Paleontology – and of the related Arts – Lapidary and other. The Society is a member of the Southeast Federation Mineralogical Societies Inc. and affiliates of the American Federation of Mineralogical Society Inc.

2017 OFFICERS and COMMITTEE CHAIRPERSONS

EXECUTIVE COMMITTEE

President.....Jimmie Armstrong...(803) 438-6000.....rvrdvr29078@gmail.com
 Vice President.....Ron Ahle.....419-2923.....the bears@earthlink.net
 Treasurer.....Laura Tesh.....731-4760.....lauralaw@bellsouth.net
 Secretary.....Sharon Sterrett.....356-1472.....ssterrett@sc.rr.com
 Past President.....Angela Valvasori.....419-2923.....thebears@earthlink.net

COMMITTEE

MembershipSusan Bloodworth.....604-1045.....susanbloodworth374@att.net
 Auctioneer.....Benira Sutphin.....315-5250.....benira@bellsouth.net
 Club Liaison.....Jim Cobb.....794-0045.....jocobb3@bellsouth.netFaceting
 Guild.....Fred Meetze.....345-7463.....fredfacator@gmail.com
 Facebook.....Dan Elswick.....252-2346.....elswickdan@yahoo.com
 Field Trip.....Open
 Historian.....Angela Valvasori.....419-2923.....thebears@earthlink.net
 Librarian.....Sheila Frame.....739-0682.....snframe@aol.com
 Newsletter Editor.....Ron Ahle.....419-2923.....thebears@earthlink.net
 Program.....Sue Shrader.....736-9317.....sue_shrader@mindspring.com
 Rookie RockhoundOpen
 Show.....Michael Montebello.....791-9921.....mauimonte@hotmail.com
 SunshineAbbie Gates.....799-9279.....2rustygates@att.net
 Website.....Michael Montebello.....791-9921.....mauimonte@hotmail.com
 Workshop.....Gary Hert.....794-9362.....gchert@hotmail.com



CGMS Website

Please visit our Website:

<http://www.cgams.org>

Webmaster: Mike Montebello

Monthly Meeting

Except for January, the meetings are held the third Monday of each month at the McKissick Museum's Auditorium, on the USC campus. Socializing and refreshments at 7:00 pm; Meeting at 7:30 pm. Please enter from the Horseshoe entrance.

Executive Board Meetings:

Except for January, the meetings are held on the fourth Monday of each month at Grecian Gardens, 2312 Sunset Blvd., and West Columbia. Meal is at 6:30pm. Meeting is at 7:00 pm.

**Rocky Trails
PO Box 6333
Columbia, SC 29260**