



# Rocky Trails



April 2019

Volume 13 Issue 4

The Newsletter of the Columbia Gem and Mineral Society

## EDITOR'S MESSAGE

Greetings,

For those who missed it, we had our second and final auction of fossils and minerals from the Max Smith donation at last month's meeting. It was a big success with many active bidders going home with nice collectibles (see photo below). The club would like to thank everyone who participated from the sorting of the materials to the final bids on specimens. The proceeds will go towards moving and maintaining our workshop.

Speaking of the workshop, we will be moving to a new location soon. One thing that would help is reducing inventory through sales and donations. On April 23<sup>rd</sup> and again on May 7<sup>th</sup>, we will have get togethers at the club workshop where club members will be given an opportunity to purchase a wide range of items from the shop. This will include furniture, lapidary items, rocks, and other items of interest and value. Our actual moving day is tentatively set for May 18<sup>th</sup>. The move will be a difficult task and volunteer help will be greatly appreciated.

On a lighter note. There are many activities for member to get involved in. We have our annual Picnic on May 5<sup>th</sup> and are encouraging members to bring Mexican dishes to share. There are also a number of fieldtrip opportunities including a club trip to Mason's Mine for sapphires. Speaking from experience, and with a little effort, you will find sapphires.

If you have friends who would like to join the club, there is an application form in this issue of the Rocky Trails and at our website. For all of the rest of you who haven't renewed your membership, get your dues in as soon as possible

Ron Ahle, editor

PS: Be sure and come to this month's meeting to hear Jerry Lipsky's presentation on corals. He makes really good presentations

## NEXT MEETING

April 15, 2019

### PROGRAM:

#### **Jerry Lipsky Fossil Corals**

Part 2: Anatomy, Taxonomy, and Extinct Sub-Classes

### REFRESHMENTS

Sharon Sterrett, Susan Richardson, John Narung, Sheila Frame, Gordon Murphy, Mandie Wenzel

### DOOR PRIZES

Provided by club from the lapidary workshop.

## SUNSHINE

June Morrison broke her wrist and injured her shoulder. She is taking physical therapy. Chris Glass is home now and cooking again. We have missed her cakes!



Club meetings are at The McKissick Museum at USC. Parking is available beside the museum where Bull St. runs into Pendleton St. See map on page 4. If you are unable to use the front steps of the McKissick Museum, there is an elevator on the ground floor down the hall from the parking lot. If you need to use the elevator call 803-261-9317 to have the door on the street level by the parking lot opened.



**Notes about Jerry Lipsky's Presentation: Fossil Corals Part 2: Anatomy, Taxonomy, and Extinct Sub-Classes**

Some of us are fortunate enough to grow up in an environment where we are so immersed in an aspect of nature, that later in life, we are surprised to learn that what we had long “discovered” on our own, had to be taught to others as a major topic. So it was for me growing up, where I spent my weekends on the reefs of south Florida and the Florida Keys. My older brother started out spearfishing (later a regret of his). The tactics included stopping the boat in about 40 feet of water and drifting for an hour or so with the boat. I just tagged along, floated and observed. At fourteen years old, I noticed there was a pattern to how the reefs and ocean floor were structured. Later that year, we started SCUBA diving, so my opportunities to study these patterns expanded from depths of 150 feet up to the breaking reef and the area of shallow water behind the reef. Several years later, as a geology student at the University of Miami, when reef structure was being “taught”, I felt so fortunate to have learned this all by experience.

Corals belong to the phylum Cnidaria, known to some of us as Coelenterates. Related classes of Cnidaria include Hydrozoa (hydroids) and the Scyphozoans (jellyfish). With the exception of fire corals and the like, these other classes do not have hard body parts that were readily fossilized. For the most part, these classes have left little fossil evidence in the record, and are not a common pursuit of the average fossil collector. By Jerry Lipsky

Jerry is a member of The Aiken Gem, Mineral and Fossil Society





### Social Media Helps our Club Stay Social!

Join us on Facebook, our social media outlet, to learn about activities of the club and to share your club-related experiences. From any Facebook page (not Google), you can search for "Columbia Gem and Mineral Society" to access the club page. Once you get there, you can click on "Like" this page and set your preferences for notifications under the "Following" button. Share the CGMS Events and Posts with your friends! Add photos of club-related topics! Use this page to share your rock and lapidary interests. Anyone can post on our page, just keep it gem and mineral relevant (no profanity or off-topic posts please). Enjoy, this is one way members of our club can stay connected. To access our web site, just type "CGMS.ROCKS" in your internet browser or you can search for Columbia Gem and Mineral Society in Google.

The Club's website is: [www.cgms.rocks](http://www.cgms.rocks)

### MEMBERSHIP

2019 dues are over-due. If you have not renewed please contact Sheila Frame immediately because she will be updating the Membership Roster with current members.

A membership form is attached to the Rocky Trails.



**CGMS Lapidary Workshop**

1601 Frink St. Cayce, SC 29033

Call or email Gary Hert at 803-794-9362 or gchert@hotmail.com to use the rock saws and capping machines.

**Moving - Lease Expires Soon**

The lease on the club's lapidary workshop expires at the end of May. Since the Club has not yet located a new workshop, a storage space at Ample Storage has been rented. The storage unit has electricity and is climate controlled. It can be used both as storage and a temporary location for lapidary work until a permanent location is found. Ample Storage is located at 3118 August Rd. in West Columbia.

Organization and packing for the move. The extra bookcases, tables, chairs, equipment, and rocks that the Club no longer needs have been identified. These will be available at the workshop get togethers shown below. There is more to do. Help is needed for the move and to prepare for the move:

**Organization Day**

Saturday May 11, 10:00 to 3:00

To prepare for Moving Day

**Workshop Moving Day**

Saturday May 18

Sunday May 19

**Columbia Gem & Mineral Society**  
**Workshop Informal**  
**Get Together**  
**Lapidary Workshop**  
 1601 Frink St.  
 Cayce, SC 29033  
**Tuesday April 23, 2019**  
**5:00 to 7:30 PM**

Bring your own food and drink. It can be pizza, sub sandwich, or something you have made. Come out to eat and talk about whatever. The workshop has paper plates, cups, & plastic forks knives.

if you want to use the saws or the capping machines Call Gary 803-794-9362  
 gchert@hotmail.com

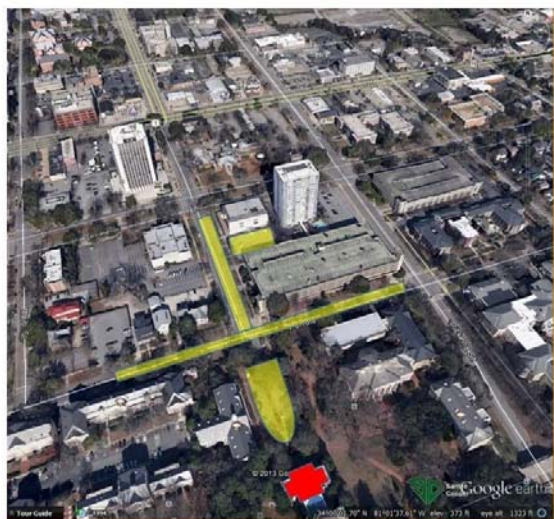
Bring something to work on while you are there. Bring anything you have found, made or bought. Drop in and visit the workshop! If you plan to be there call Sue 803-261-9317  
 ashraider@mindspring.com

**Columbia Gem & Mineral Society**  
**Workshop Informal**  
**Get Together Lapidary Workshop**  
 1601 Frink St. Cayce, SC 29033  
**Tuesday May 7, 2019 ...5:00 to 7:30 PM**

Bring your own food and drink. It can be pizza, sub sandwich, or something you have made. Come out to eat and talk about whatever. The workshop has paper plates, cups, & plastic forks knives.

if you want to use the saws or the capping machines  
 Call Gary 803-794-9362  
 gchert@hotmail.com

Bring something to work on while you are there. Bring anything you have found, made or bought. Drop in and visit the workshop! If you plan to be there call Sue 803-261-9317  
 ashraider@mindspring.com



**Yellow shaded areas = suggested parking** **McKissick Museum (in Red)**



### McKissick Museum

#### **McKissick Museum:**

[www.artsandsciences.sc.edu/mikissickmuseum](http://www.artsandsciences.sc.edu/mikissickmuseum); phone 803.777.7251; College of Arts and Sciences, University of South Carolina; 816 Bull Street, Columbia, SC 29208

**Natural Curiosity:** The University of South Carolina and the Evolution of Scientific Inquiry in the Natural World is an ongoing exhibit in the 3rd floor gallery. Explore your own “natural curiosity” in this exhibit that highlights not only the treasures of nature, but also the evolution of the field of natural history. Beginning soon after USC was founded as South Carolina College, professors and students alike collected samples of animal, vegetable, and mineral to study and grow their understanding of the world around them. Today, visitors can still learn from these real and authentic objects or use newly installed touchscreens to dive deeper into the collections and explore the Historic Southern Naturalists. Permanent Exhibition. Exhibition hours are Monday through Friday 8:30 a.m. to 5 p.m. Saturday 11 a.m. to 3 p.m.

### South Carolina State Museum

<http://scmuseum.org/events/upcoming-events/>

301 Gervais Street  
Columbia, SC 29201  
803-898-4921

**Second Shift Twosdays:** Every Tuesday from 5 – 10 p.m., General admission is 2 for \$10

The museum is open late every Tuesday. Explore four floors of permanent and changing exhibits, planetarium shows, 4D Theater films, night-sky viewing in the Observatory and more.

#### **Boeing Observatory Public Solar Observing Times:**

Mon. to Fri: 10 a.m. to 5 p.m.

Saturday: 11 a.m. to 6 p.m.

Sunday: 1 to 5 p.m.

**Night Observing:** until 10 p.m. during Second Shift Tuesday each week.



#### **Natural History Day – Rocks:**

**Sat., June 8 from 10 a.m. – 4 p.m.**

Join the State Museum for a very special day full of minerals, geology, archeology, rocks and more!

The Columbia Gem & Mineral Society will have a table with displays and demonstrations. The purpose is to explain the use of naturally occurring materials for personal use (jewelry, home décor).

### GENERAL MEETING MINUTES

#### March 18, 2019 General Meeting of Columbia Gem and Mineral Society, Inc.

The Columbia Gem and Mineral Society, Inc. held the monthly club meeting on the 3rd Monday, March 18, 2019, at the McKissick Museum at 816 Bull Street, Columbia, SC 29208 on the USC campus.

7:00 **President:** Jimmy Armstrong called the meeting to order. Jimmy greeted Beth Slicewall, visitor, and thanked Gordon Murphy for the refreshments. He said the club had provided the door prizes. Pat Hert showed Columbia Gem and Mineral Society shirts and items available for members to buy.

**Vice President:** Ron Ahle talked about the evening's silent auction, noting that the items came from the Max Smith's collection. The money from the auction would be used for the Columbia Gem and Mineral Society's expenses and workshop needs. Ron also invited all members to go to the Grave's Mountain Field Trip listed in the last Rocky Trails.

**Treasurer:** Angela Valvasori said the audit for the 2018 year had been completed by Mandie Wenzel with the help of Jonathan Wenzel. Angela also showed official club patches that members could buy for \$10.00. Angela said that we all should recognize Ron Ahle for his efforts in preparing for the silent auction. Ron spent hours sorting, researching, identifying, labeling, and presenting the items for the auction.

**Programs:** Sue Shrader said there would be a gathering at the workshop on March 19 from 5:00-7:00. Members could purchase rock specimens and furniture at the gathering. Gary Lipsky would be doing the April Program.

**Liaison:** Jim Cobb acknowledged that many of our club members had helped at the Aiken Gem and Mineral Show the previous weekend. **Workshop:** Gary said that there had been interest in the workshop as he had helped some members make cabs over the last month. **Show Committee:** Sue Shrader passed out flyers for our show in November and passed out flyers for the Atlanta Gem and Mineral Show. **Membership:** Sheila Frame said we now had 97 members with 81 adults and 16 children. She reminded all that membership dues were due. She said she had membership cards available.

**Field Trips:** Dave Hanes said he had a field trip planned to Ruby Mines in Franklin, NC for April 26, 27, and 28. He said that the fee to dig would be \$20.00 per person. Dave Hanes said he visited Vulcan Mines in Columbia, SC, where he is working on setting up a field trip for our club. The Quarry is 500 feet deep with a road for large trucks. He said laying around are specimens of granite with hornblende and pyrite. Dave said he would delay the field trip to Vulcan Quarry and that when we did have the field trip, members would need protective gear: glasses, boots, and hard hat. Ron Ahle reminded members about the Dixie Mineral Field Trip.

**Sunshine:** Abbie Gates said June Morrison was recovering from a fractured wrist, Chris Glass was home from rehab, Pat Hert was dealing with Lupus issues, and Jesse Gates was overcoming the loss of his sister.

Ron Ahle explained the process of the silent auction and told members that they could bid from 8:00 until 8:40. Since there was no new or old business, members voted to adjourn to draw door prizes and begin the silent auction.

Respectfully submitted by  
*Susan Bloodworth*

### EXECUTIVE MEETING MINUTES

#### March 25, 2019 Board Meeting of Columbia Gem and Mineral Society, Inc.

The Columbia Gem and Mineral Society met on the 4th Monday, March 25, 2019, at Grecian Gardens at 2312 Sunset Blvd., West Columbia, SC 29169. Attending: Ron Ahle, Angela Valvasori, Sheila Frame, Sharon Sterrett, Dan Elswick, Jim Cobb, and Susan Bloodworth.

**7:07 Vice President:** Ron Ahle called the meeting to order. Ron said he would be trying to set up a field trip in May to 40 Acre Rock and Savage Bay in Camden, SC. Ron then noted that the club had a great auction which helped eliminate many specimens from the Max Smith collection. Ron said that many people's efforts went into the success of the two auctions from the collection. Members also commended Ron for his hours of sorting, identifying, researching, labeling, and preparing items for the auction. Ron said there were still geodes to be sorted in the collection.

**Treasurer:** Angela gave the treasurer report and indicated that the silent auctions were a success. Also, Angela noted she had taken in some money from sales of rock specimens and other items at the workshop.

**History:** Angela also talked about some interesting historical facts concerning the club. Angela had taken home and sorted a box of documents, newsletters and other paper items that had been found in the workshop shed. She found an original copy of the vote to change the name of the club to The Columbia Gem and Mineral Society. A field guide had also been found which contained information about dig sites, locations, and mineral specimens. Ron suggested that the club make a copy of the field guide and donate the field guide to the McKissick Gem and Mineral Museum.

**Membership:** Sheila Frame said we now have 98 paid members for 2019: 82 adults and 16 children. 24 are new members.

**Facebook:** Dan Elswick said he had 300 likes and was curious about how many new members came from Facebook connections.

**Liaison:** Jim Cobb said that the Aiken-Augusta Show had very large attendance.

**Programs:** Jerry Lipsky will present for the April meeting, and Ron Ahle will be presenting on Rock Art in May or June.

**Picnic** on Sunday, May 5 from 2:00-5:00: The club will be holding a picnic at the workshop. Since it will be Cinco de Mayo, the theme will be Mexican. Those that contribute to picnic refreshments, please bring a Mexican dish.

Since the **workshop** lease on Frink Street will be terminated at the end of June, Board Members discussed the up-coming events that will take place at the workshop in preparation for the move. The club will have gatherings to take or buy furniture and rock specimens that do not need to be put in storage: Tuesday, April 23 from 5:00-7:00 pm and Tuesday, May 7 from 5:00-7:00 pm. Workday: Saturday, May 11, is designated as a workday to prepare materials for moving. Moving Days: Saturday, May 18, and Sunday, May 19, club members will be moving items from the workshop on Frink Street to a storage unit (Ample Storage on Augusta Hwy in West Columbia) which has electricity and climate control where we can set up a small, temporary workshop. We will need lots of help to move.



### EXECUTIVE MEETING MINUTES, continued

After much discussion, the Members of Board voted to approve a motion to rent a 10' by 30' storage unit at Ample Storage on Augusta Hwy in West Columbia, SC. The storage unit has climate control and electricity to be used as a temporary workshop and to store club materials and supplies. Susan Bloodworth said she would check with UTurn at Calvary Chapel of Lexington to see if the program could provide some helpers to move Workshop items on May 18 and to provide a truck. Additionally,

Susan said she would see if UTurn would take furnishings that the club no longer needed for the Thrift Store that supports the UTurn Program. Susan said if she could work out this arrangement, the club would need to make a donation to the UTurn Program. Sharon Sterrett said she would measure furnishings and equipment at the workshop to see how to set up the storage unit to accommodate the arrangement for a temporary workshop at the storage unit.

New Business: Angela Valvasori said the club had been asked to set up an exhibit and activities for a Natural History Event on June 8, 2019, at the SC State Museum in Columbia, SC. The exhibit would need some hands-on educational activities and to display how rocks and minerals are used for cabochons, beading, wire wrapping, geode cracking, etc. Board Members agreed that the club members could set up activities and an exhibit and that members could take turns manning the booth.

Since there was no more old or new business, board members voted to adjourn at 8:35.

Respectfully submitted by  
*Susan Bloodworth*

### April Field Trip to Ruby City/Mason Sapphire Mine

A CGMS field trip has been scheduled for the last weekend in April, 2019, 4/27/19 – 4/28/19. This scheduled weekend trip includes the opportunity to dig for raw gem stones at the ruby and sapphire mines owned by Masons Mines/Ruby City. They would charge **each participant \$20.00 per day to dig**, and let you keep all that you dig up and collect. We need at least 20 club members for this trip to get this deal. A Ruby City guide would accompany the group and help us on both days. We would not have to prepay this fee until the morning of the hike into the mining area.

This field trip would require that we show up for the hike into the mining area on early Saturday morning (4/27/19) and we could continue the mining on Sunday, 4/28/19. If you wanted to dig both days we would recommend that you stay over Saturday night, for the Sunday visit. ***You can keep all that you dig and collect and collection buckets are included, free.***

The mines are located around Franklin, NC, beyond the town limits (which is at least a 3.5 hour drive from Columbia, SC), so we would hope that anyone who came on this field trip would dig for the 2 days, weather permitting. For those campers, Ruby City/Masons Mines has 2 camping areas close to the mines, one of which has access to electrical power. Both campsites share a brand-new bath house. All participants need to bring and wear Personal Protective Equipment (**PPE**) while digging at the mines.

Please contact David Hanes, the Field Trip Coordinator, at (336) 442-0639, if you are interested and have not signed the trip sheet that was passed around on the February, 2019 CGMS meeting.



[Future CGMS Field Trip to the Columbia Vulcan Quarry](#)**The Columbia Vulcan Quarry Field Trip**

The Vulcan Quarry Field Trip includes a drive down into the Vulcan Quarry located at 545 Georgia St., in downtown Columbia, SC, along the Congaree River. The tour and quarry walk-around would give the group a view of an important granite quarry that has been in operation since the late 19<sup>th</sup> century. The tour could last at least 3 hours, and all participants could collect and keep some very unique mineral samples from a quarry that is 200 feet below sea level. The quarry tour leader would be **Mr. Cameron Walker, the District Operations Manager – Southeast Division, of the Vulcan Materials Company**, who will tell us the history and business mission of this important mineral resource. Mr. Walker has been working in quarries since his 19<sup>th</sup> birthday.

*All tour participants would be required to wear Personal Protective Equipment (PPE) such as hard hats, steel – toed boots and safety glasses, and attend a safety discussion just before the tour.*

A date has not been set for this field trip yet, but a tour could be quickly scheduled within 3 weeks. Please contact David Hanes, the CGMS Field Trip Coordinator, at (336) 442-0639, if you are interested and have not signed the trip sheet that was passed around on the February, 2019 CGMS meeting.

Below is a 3/11/2019 photograph from the top of the quarry into its depths:



### Field Trip to Graves Mountain

April 26 – 28, 2019 Graves Mountain, Lincoln, GA Rock Swap & Dig

Collecting Rutile, Kyanite, Lazulite, Iridescent Hematite, Pyrophyllite, Pyrite, Ilmenite, Fuchsite, Barite, Sulfur, variscite, woodhouseite, crandallite, strengite, phosphosiderite, cacoenite, blue quartz, quartz crystals, etc.

Friday April 26, 8 am to 6 pm

Saturday April 27, 8 am to 6 pm

Sunday April 28, 8 am to 6 pm

The caretaker in charge of Graves Mountain, Clarence Norman Jr., has announced plans to hold a three day dig and rock swap on the Mountain during April and October. He will have the mountain open to collecting from 8 am to 6 pm each day. All participants must stop at the welcome table in the Hospitality tent to sign a liability release and make a small contribution to defray the cost of opening the mountain and providing port-o-lets. There will be several golf cart type, four wheeled vehicles available to transport those participants who have trouble walking long distances. The dig will cease and everyone is expected to be off the mountain by around 6 pm each day. Participants will be allowed to park in a designated area on the mountain.

**Rock Swap and Hot Food/Drinks:** Junior will set aside an area in the upper parking lot for tables to be setup for daily rock swaps. Anyone who would like to setup a table(s), please contact Junior at the phone numbers listed below. Hot food cooked on the grill, cold drinks and chips will be available for purchase on the mountain during all three days of these events.

Contact Information:

Clarence Norman Jr. (Junior) - 706-359-1544 (his business) or 706-401-3173 (his cell)

**THESE DIGS ARE OPEN TO ALL**  
**NO NEED TO SIGN-UP, JUST SHOW UP FOR ALL "ROCK SWAP AND DIGS"!**

Graves Mountain is accessible and open for mineral collecting by colleges, universities, and gem and mineral societies. Groups as small as two INDIVIDUAL mineral collectors can now reserve the mountain!

**DIRECTIONS:** From Atlanta's I-285, take I-20 east to the exit for Washington, GA SR 78 (SR 10, SR 17) and turn left.

Travel north to Washington, turn right onto SR 378 and drive 11 miles to the Graves Mountain area. The entrance to Graves Mountain is on your right about 8/10 mile past the Lincoln county line sign



Rutile



Golden pyrophyllite



## Dixie Mineral Council Field Trips

The Southeast Federation of Mineralogical Societies, Inc



The Friendly Federation - Founded in 1976 to serve  
DMC Program of the SFMS Field Trip Committee  
Copyright © All rights reserved.

An Official Field Trip of the Northeast Georgia Mineral Society (Cornelia, GA) (HOST)  
An Official Field Trip of the Columbia Gem and Mineral Society

**Saturday, May 18, 2019**  
**10:00 AM Eastern Time**  
**Chunky Gal Mountain**  
**Clay County, NC**

**TRIP:** Chunky Gal Mountain -- people always wonder about that name. Legend has it that it was named for a young Native American woman who fell in love with a young man from another tribe. Some stories say she prevailed by defying the odds and crossing the mountain to be with her beloved, while other stories say she never saw him again. Hopefully it was the happy ending. It is certainly a happy place for rockhounds.

**COLLECTING:** Green smaragdite is abundant and can be found in small chunks to large boulders. It is a variety of the amphibole mineral actinolite and gets its emerald green color from a touch of chromium. Some of the smaragdite has tiny bits of pink to red corundum in it.

**BRING:** Rock hammer, chisel, short handled sledge, a UV light for verifying corundum, gloves, safety glasses, hiking boots, 5 gallon bucket, and paper for wrapping specimens. You should also bring sunscreen, insect repellent, hat, water, and snacks.

**Very Important – Please read carefully: According to National Forest rules, “Materials must be removed using small hand tools without mechanical means or motorized equipment. Removing mineral materials with a pick, shovel, sluice box or similar large tools can cause significant impacts to resources is considered mechanical so therefore not allowed.”**

For more information about these rules, see the following website:  
[www.fs.usda.gov/detail/nfsnc/recreation/?cid=stelprdb5420144](http://www.fs.usda.gov/detail/nfsnc/recreation/?cid=stelprdb5420144).

**TERRAIN:** Wooded areas are steep and rocky and may be difficult for people with mobility issues. There may be poison ivy, snakes, ticks, mosquitoes, and other wildlife in the area. Parking may be limited, so carpooling is highly recommended.

**FEE:** None.



**CHILDREN (MAYBE):** The terrain may be difficult for small children and they may encounter dangerous wildlife. Parents are encouraged to consider their child's interest and abilities before attending this trip. **All children must be accompanied by an adult at all times. Attendees with unattended children will be asked to leave for the safety of the children and other participants.**

**PETS (NO):** This location is not suitable for pets so pets are **NOT** allowed.

**FACILITIES:** There are no facilities at this location. Closest facilities are in Hayesville, NC, about 16 miles to the west, and Franklin, NC, about 19 miles to the east. Cell coverage may be spotty or non-existent.

**LODGING:** There are some hotels in Franklin, NC and near Hayesville, NC, and several in Murphy, NC (about 30 miles away).

**ADDITIONAL INFORMATION:** Northwest Georgia Mineral Society members will be available to answer questions about the site and will have water and snacks.

#### **DIRECTIONS AND WHERE TO MEET:**

GPS coordinates: 35 04' 10.0" N, 83 37' 43.3 W  
Intersection of Highway 64 and Buck Creek Road

**From the west:** Approximately 16 miles from Hayesville, NC on Hwy 64 (left turn onto Buck Creek Road).

**From the east:** Approximately 19 miles from Franklin, NC on Hwy 64 (right turn onto Buck Creek Road).

**CONTACT:** Kim Cochran, 770-979-8331. Cell phone the day of trip, Charles Carter, 770-998-1127.



Smaragdite with corundum

## **16th Annual Western North Carolina Rockhound Roundup July 21st - 28th, 2019**

**The largest annual Rockhound gathering in North Carolina!**

**Hosted by: M.A.G.M.A., the Mountain Area Gem and Mineral Association**

**This event will be based at Camp Stephens. This property is located just outside the city of Asheville off of Interstate 26. The camp is just 3.5 miles from the Interstate but located in a secluded wooded area on the French Broad River. There is room for many RV's and tent campers. There is a large indoor pavilion with two bathrooms, two showers (note that the showers and bathrooms have been renovated and are in excellent working condition now) a kitchen, electricity and water for the outside campers and inside the pavilion. There are large campfire pits for use by campers. I will also have two porta potties' on site for extra bathrooms. There will be a dumpster on site for all garbage (be sure to bag your garbage before putting it in the dumpster). Campers will be able to swim, fish, canoe, snorkel, etc. in the river. The camp area is completely wooded so there is plenty of shade. We will be allowed to use the numerous tables provided in the pavilion to set up and swap/sale our rocks and minerals. Three miles from the camp are numerous gas stations, a mall, restaurants, motels/hotels and more.**

**Campers can arrive anytime Sunday the 21st to set up camp and get ready for the week's events.**

**Agenda: We have coordinated this event to coincide with the numerous gem and mineral shows that are taking place in Franklin, North Carolina the same week. We will visit a variety of mines for collecting. There will be directions to the mines given to all attendees, campers and participants can visit any of the mines listed here, any day of the roundup as many times as they like. I will have release forms and take payment for some mines at the camp and will provide instructions as to where to pay for some mines.**

**Mines we will have full access to during the week of the roundup:**

**Crabtree Emerald Mine in Mitchell County, NC. Fee: \$15 for those camping at the roundup, \$20 for all others. Release forms and payment will be collected at the camp prior to the dig. Directions will be provided at camp.**

**Sinkhole Mine in Mitchell County, NC. No fee, directions will be provided at camp.**

**Little Pine Garnet Mine in Madison County, NC. Fee: \$25 per person. Forms and payment are handled at the office of the Sandy Bottom Trail Rides before proceeding to the mine. Directions will be provided at camp.**

**Sharpes Emerald Prospect in Hiddenite, NC. Fee \$20 for those camping at the roundup, \$25 for all others. Release forms and payment will be collected at the camp prior to the dig. Directions will be provided at camp.**

**We will be visiting the numerous gem and mineral shows in Franklin, NC daily.**

**There will be demonstrations on wire wrap, flint knapping, cabochon making, etc. Display tables will be available to show off your favorite specimens. The members have a cookout in the evening and a big campfire. There will be tables setup throughout the week for people to sell and trade their rocks and minerals, gems and jewelry.**

**Saturday the 27th; THE FEAST! Everyone should bring a dish or desert and something to drink. If you need to cook something for the meal, you should start cooking around 1:00 to be ready to eat around 3:00.**

**Fee for Roundup: \$40.00 per person. Vendors, \$60.00. This covers all 7 days of the Roundup. Kids 12 and under are free. If you plan to only attend a few of the days, the cost will be \$10.00 per day.**

**Accommodations: Camping on the Camp Stephens property is included in the above cost**

---



LAST WEEK...For SFMS members to have priority for classes before we open to the public! We have some amazing classes this year and lots of fun planned to connect with fellow Federation members...You don't want to miss this one!

Join us for the  
2019 SFMS Workshop  
at William Holland  
June 9th - 14th, 2019

Please find all the information regarding classes, registration form and payment at the new website:

[www.sfmsworkshops.org](http://www.sfmsworkshops.org)

For questions please contact  
Kristine Robertson  
[kristine@kmarella.com](mailto:kristine@kmarella.com)  
[863-640-2887](tel:863-640-2887)



## AREA SHOWS

**April 12-14, SARASOTA, FLORIDA:** Frank Cox Productions; Sarasota Municipal Auditorium, 801 N. Tamiami Trail (U.S. 41); frankcox@comcast.net; Website: <http://www.frankcoxproductions.com>

**April 27-28, 2019, Memphis, TN:** Memphis Mineral, Fossil, and Jewelry Show  
"The Earth Wide Open" Memphis Archaeological and Geological Society  
Memphis International Agricenter, 7777 Walnut Grove Rd. Memphis, TN  
web: [www.TheEarthWideOpen.com](http://www.TheEarthWideOpen.com)  
inf@]theearthwideopen.com. James Butchko 901-692-7518

**May 8-12, FRANKLIN, NORTH CAROLINA:** Annual show; Echo Valley Gem Show ; Echo Valley Gem Show (across from GLW), 6456 Sylva Rd.; Damian w/ Bellpoint ; Email: [mbellpoint@gmail.com](mailto:mbellpoint@gmail.com); Website: [www.bellpointinc.com](http://www.bellpointinc.com)

### **Launch of American Geode's gem, mineral, fossil show page!**

American Geode's gem, mineral, and fossil show page will be #1 on Google, Yahoo, when people search for gem, mineral, fossil shows. No log-in, signing up, or passwords. American Geode wants EVERYBODY, from academics, to college students, to interior design professionals to come to your shows and to buy at your shows. American Geode works with more diverse crowd than just serious mineral collectors.

Even if your club does not host shows, please visit American Geode for shows to visit when you are traveling on vacation or traveling for business!

<http://www.americangeode.com/shows/>

## Fossils show worldwide catastrophe on the day the dinosaurs died

By Ben Guarino  
March 29, 2019  
From The Washington Post



Sixty-six million years ago, a massive asteroid crashed into a shallow sea near Mexico. The impact carved out a 90-mile-wide crater and flung mountains of earth into space. Earthbound debris fell to the planet in droplets of molten rock and glass.

Ancient fish caught glass blobs in their gills as they swam, gape-mouthed, beneath the strange rain. Large, sloshing waves flung animals onto dry land, then more waves buried them in silt. Scientists working in North Dakota recently dug up fossils of these fish: They died within the first minutes or hours after the asteroid hit, according to a paper published Friday in Proceedings of the National Academy of Sciences, a discovery that has sparked tremendous excitement among paleontologists.

"You're going back to the day that the dinosaurs died," said Timothy Bralower, a Pennsylvania State University paleoceanographer who is studying the impact crater and was not involved with this work. "That's what this is. This is the day the dinosaurs died."

About 3 in 4 species perished in what is called the Cretaceous-Paleogene extinction, also known as the K-Pg event or K-T extinction. The killer asteroid most famously claimed the dinosaurs. But the T. rex and the triceratops were joined by hordes of other living things. Freshwater and marine creatures were victims, as were plants and microorganisms, including 93 percent of plankton. (A lone branch of dinosaurs, the birds, lives on.)

Four decades of research buttresses the asteroid extinction theory, widely embraced as the most plausible explanation for the disappearance of dinosaurs. In the late 1970s, Luis and Walter Alvarez, a father-son scientist duo at the University of California at Berkeley, examined an unusual geologic layer between the Cretaceous and Paleogene periods. The boundary was full of the element iridium, which is rare in Earth's crust but not in asteroids. Walter Alvarez is one of the authors of the new study.

The Hell Creek fossils represent "the first mass death assemblage of large organisms anyone has found" that sits at the K-Pg boundary, study author Robert DePalma said in a statement.

DePalma, a doctoral student at the University of Kansas, began excavating the site at North Dakota's Hell Creek formation in 2013. Since then, DePalma and other paleontologists have found heaps of fossilized sturgeon and paddlefish with glass spheres still in their gills.

They found squid-like animals called ammonites, shark teeth and the remains of predatory aquatic lizards called mosasaurs. They found dead mammals, insects, trees and a triceratops. They found foot-long fossil feathers, dinosaur tracks and prehistoric mammal burrows. They found fossilized tree gunk called amber that had captured the glass spheres, too.

The site has "all the trademark signals from the Chicxulub impact," Bralower said, including the glass beads and lots of iridium. In the geologic layer just above the fossil deposit, ferns dominate, the signs of a recovering ecosystem. "It's spellbinding," he said.

In the early 1990s, researchers found the scar left by the asteroid — a crater in the Yucatan Peninsula. The impact was named after the nearby Mexican town of Chicxulub. Suggested "kill mechanisms" for the Chicxulub impact abound: It may have poisoned the planet with heavy metals, turned the ocean to acid, shrouded Earth in darkness or ignited global firestorms. Its punch may have triggered volcanoes that spewed like shaken soda cans.

Hell Creek is more than 2,000 miles from the Chicxulub crater. But a hail of glass beads, called tektites, rained there within 15 minutes of the impact, said study author Jan Smit, a paleontologist at Vrije University in Amsterdam who also was an early discoverer of iridium at the K-Pg boundary.

The fish, pressed in the mud like flowers in a diary, are remarkably well-preserved. "It's the equivalent of finding people in life positions buried by ash after Pompeii," Bralower said.

At the time of the dinosaurs, the Hell Creek site was a river valley. The river fed into an inland sea that connected the Arctic Ocean to a prehistoric Gulf of Mexico. After the asteroid struck, seismic waves from a magnitude 10 to 11 earthquake rippled through this sea, according to the study authors.

This caused not a tsunami but what's known as seiche waves, the back-and-forth sloshes sometimes seen in miniature in a bathtub. These can be symptoms of very distant tremors — such as the seiche waves that churned in Norwegian fjords in 2011 after the giant Tohoku earthquake near Japan.

Seiche waves from the inland sea reached 30 feet, drowning the river valley in a pulse of water, gravel and sand. The rain of rocks and glass followed. The tektites dug "small funnels in the sediment laid down by the seiche," Smit said, "so you know for sure they are coming down when the waves are still running upriver." This is preservation, in other words, of a fresh hell.

# Columbia Gem and Mineral Society



## MEMBERSHIP FORM

Year \_\_\_\_\_

(Membership Year runs January 1 – December 31)

<https://www.cgms.rock>

Check one: DUES CURRENT MEMBERS

Individual \$25 \_\_\_\_\_

Family \$30 \_\_\_\_\_

DUES for NEW MEMBERS ONLY (Prorated Quarterly)

Individual \$26 \_\_\_\_\_ \$21 \_\_\_\_\_ \$14 \_\_\_\_\_ \$7 \_\_\_\_\_

Family \$31 \_\_\_\_\_ \$24 \_\_\_\_\_ \$16 \_\_\_\_\_ \$8 \_\_\_\_\_

Jan 1 Apr 1 July 1 Oct 1

Name: \_\_\_\_\_ Birth Date: \_\_\_\_\_

Address: \_\_\_\_\_

City \_\_\_\_\_ State \_\_\_\_\_ Zip: \_\_\_\_\_

Home Phone: \_\_\_\_\_

Cell Phone(s): \_\_\_\_\_

Email Address: \_\_\_\_\_

For those with privacy concerns: If you don't want your home phone or physical address published in the Club Roster please circle or highlight: No phone No address

**FAMILY MEMBERSHIP:** Spouse and children under 18 yrs. living at the same address.

Spouse: \_\_\_\_\_ Birth Date: \_\_\_\_\_

Child: \_\_\_\_\_ Birth Date: \_\_\_\_\_

Child: \_\_\_\_\_ Birth Date: \_\_\_\_\_

Child: \_\_\_\_\_ Birth Date: \_\_\_\_\_

Child: \_\_\_\_\_ Birth Date: \_\_\_\_\_

**CLUB PARTICIPATION:** Please indicate which committee you can help with:

Field Trips\_\_ Membership\_\_ Newsletter\_\_ Programs\_\_ Social\_\_ Faceting Guild\_\_

Workshop\_\_ Show Chairman\_\_ Publicity\_\_ Sunshine\_\_ Rookie Rockhound' s\_\_

May we call on you to work with a Board Member on a committee or project? \_\_\_\_\_

Make checks payable to: Columbia Gem & Mineral Society (and) mail to: PO Box 6333  
Columbia, SC 29260

Previous Membership in another Mineral Society? Club \_\_\_\_\_

Have you held an office in another club? Club/Office \_\_\_\_\_

Do you have a rock collection? If so; what? \_\_\_\_\_

What lapidary skills and interests do you have? \_\_\_\_\_

For Club Use



The Columbia Gem and Mineral Society is an organization of persons associated together to promote popular interest in and to provide means for the exchange of knowledge of the Earth Sciences – Geology, Mineralogy, and Paleontology – and of the related Arts – Lapidary and other. The Society is a member of the Southeast Federation Mineralogical Societies Inc. and affiliates of the American Federation of Mineralogical Society Inc.

### **2019 OFFICERS and COMMITTEE CHAIRPERSONS**

#### **EXECUTIVE COMMITTEE**

President.....Jimmie Armstrong...(803) 438-6000.....rvrdvr29078@gmail.com  
 Vice President.....Ron Ahle.....419-2923.....the bears@earthlink.net  
 Treasurer.....Angela Valvasori.....419-2923.....the bears@earthlink.net  
 Secretary.....Susan Bloodworth.....604-1045.....susanbloodworth374@att.net

#### **COMMITTEE**

Membership .....Sheila Frame.....739-0682.....ibframed@gmail.com  
 Auctioneer.....Benira Sutphin.....315-5250.....benira@bellsouth.net  
 Club Liaison.....Jim Cobb.....794-0045.....jocobb3@bellsouth.net  
 Faceting Guild.....Fred Meetze.....345-7463.....fredfacetor@gmail.com  
 Facebook.....Dan Elswick.....727-9186.....elswickdan@yahoo.com  
 Field Trip.....David Hanes.....(336) 442-0639.....davehanes@aol.com  
 Historian.....Angela Valvasori.....419-2923.....the bears@earthlink.net  
 Librarian.....Sheila Frame.....739-0682.....snframe@aol.com  
 Newsletter Editor.....Ron Ahle.....419-2923.....thebears@earthlink.net  
 Program.....Sue Shrader.....736-9317.....sue\_shrader@mindspring.com  
 Rookie Rockhound .....Open  
 Show.....Michael Montebello.....791-9921.....mauimonte@hotmail.com  
 Sunshine .....Abbie Gates.....799-9279.....fossilwoman43@gmail.com  
 Website.....Michael Montebello.....791-9921.....mauimonte@hotmail.com  
 Workshop.....Gary Hert.....794-9362.....gchert@hotmail.com





**CGMS Website**

***Please visit our Website:***

<http://www.cgams.org>

Webmaster: Mike Montebello

**Monthly Meeting**

Except for January, the meetings are held the third Monday of each month at the McKissick Museum's Auditorium, on the USC campus. Socializing and refreshments at 7:00 pm; Meeting at 7:30 pm. Please enter from the Horseshoe entrance.

**Executive Board Meetings:**

Except for January, the meetings are held on the fourth Monday of each month at Grecian Gardens, 2312 Sunset Blvd., and West Columbia. Meal is at 6:30 pm. Meeting is at 7:00 pm.

**Rocky Trails  
PO Box 6333  
Columbia, SC 29260**