



Rocky Trails



May 2018

Volume 12 Issue 4

The Newsletter of the Columbia Gem and Mineral Society



EDITOR'S MESSAGE

Dear Members,

Greetings members. We had a great time at the club picnic with many folks sharing rockhounding stories and a bounty of good food. Lot's of strawberries this year! Gary had the rock saw going while members cut slabs from there material. Dave brought fossils from Alabama and other far off destinations and shared info about them and offered some for sale. A good time was shared by all. Congratulations to Sheila Frame for winning the first of two lapidary scholarships given to our club for participating in the Southeastern Federation of Mineralogical Societies fund raising auction. A drawing for a second award will be made at our next club meeting.

In last month's issue of the Rocky Trails I reported that the sorting of the Max Smith donation was completed. Now we are ready to make some of this material available to members. Come to our next club meeting where we will be having a silent auction and door prizes for some of the fossils from the donation. See more information on page 4.

Welcome to all the new members to our club. We look forward to sharing our club activities with all of you! If you have friends who would like to join the club, there is an application form on our website.

Until next time,
Ron Ahle

PS. The Club's new website is www.cgms.rocks

NEXT MEETING

May 21, 2018

PROGRAM:

Silent Auction

The club will be auctioning fossils from the Max Smith donation as well as item's from the workshop. Members can sell their own items including rocks, tools, jewelry, and books. Your choice; keep the money from the sale, donate it to the club, or split the sales between the club and member. Bring your own change for member's sale; keep up with your own sales and money. Auction purchases should be made using cash or checks.



REPERCUSSIONS



Club meetings are at The McKissick Museum at USC. Parking is available beside the museum where Bull St. runs into Pendleton St. See map on page 10. If you are unable to use the front steps of the McKissick Museum, there is an elevator on the ground floor down the hall from the parking lot. If you need to use the elevator call 803-261-9317 to have the door on the street level by the parking lot opened.

[2018 SFMS Scholarships Awards](#)

The 2018 SFMS Scholarships winners have been drawn. Last year the Columbia Gem and Mineral Society was sent raffle tickets for club members to purchase. The SFMS also requested donations of minerals, fossils, and jewelry to also be drawn as prizes.

The SFMS sponsors Gem, Jewelry and Mineral workshops each year. These are held at Wildacres, near Little Switzerland in North Carolina, and at the William Holland Retreat near the small town of Young Harris in northeast Georgia. A broad range of courses related to the lapidary arts are taught by qualified instructors from throughout the Federation.

The Columbia Gem and Mineral Society has won 2 scholarships based on the donations club members sent in and raffle tickets sold. An email was sent from the Columbia Gem & Mineral Society asking members if they were interested in taking these classes and to respond back. The scholarship winners are to be drawn from these responses.

It was decided at the club board meeting that one would be awarded for the William Holland session June 10 to 16. The drawing was held on May 1st and the award has been given to Sheila Frame.

The second one will be awarded for the Wildacres sessions on either August 20 to 26 or September 17 to 23. TO BE DRAWN AT THE MEETING ON MAY 21.

Each scholarship has a value of \$395.00. This includes room, meals and instruction. There is an additional cost for supplies. Cost depends on the class. You would need to contact the instructor. Go to <http://sfmsworkshops.com/>

SFMS Workshop Classes 2018
<http://sfmsworkshops.com/>



Social Media Helps our Club Stay Social!

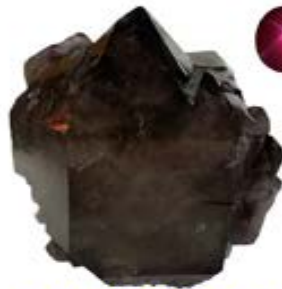
Join us on Facebook, our social media outlet, to learn about activities of the club and to share your club-related experiences. From any Facebook page (not Google), you can search for "Columbia Gem and Mineral Society" to access the club page. Once you get there, you can click on "Like" this page and set your preferences for notifications under the "Following" button.

Share the CGMS Events and Posts with your friends! Add photos of club-related topics! Use this page to share your rock and lapidary interests. Anyone can post on our page, just keep it gem and mineral relevant (no profanity or off-topic posts please). Enjoy, this is one way members of our club can stay connected. To access our web site, just type "CGMS.ROCKS" in your internet browser or you can search for Columbia Gem and Mineral Society in Google.



9th Bi-Annual
Asheville, North Carolina
Gem, Mineral and Fossil Show!
September 21st – 23rd, 2018

Rocks, Gems, Crystals, Minerals, Fossils,
 Artifacts, Meteorites and More!



Hours: 9am – 6pm Friday and Saturday
10am – 4pm Sunday

Free Admission
Rain or Shine

Food and Drinks available,
 11am – 4pm Daily

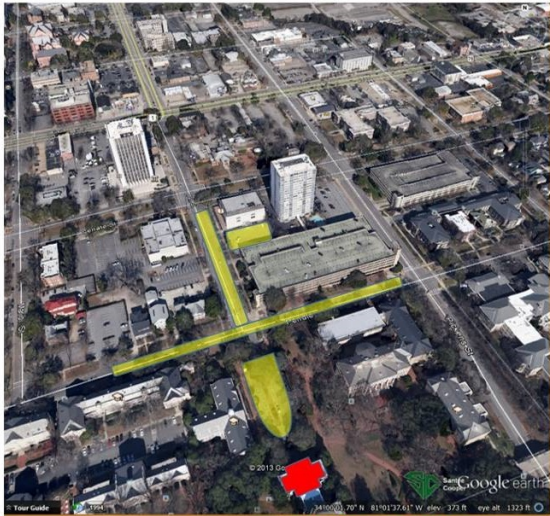
For more information,
contact Rick at:
828-779-4501 or email
rick@wncrocks.com

Directions: Take Exit 33 off of
Interstate 26 East. Turn left (West)
on Brevard Road/Hwy. 191. Drive
3.5 miles to Clayton Road on the
left, turn left and drive 2/10ths of a
mile to the entrance to Camp
Stephens on the left. If coming West
on I-26, take Exit 37, go left under
interstate, turn right onto Clayton
Road, the camp will be on the right.
Look for 'GEM SHOW' signs.
Address: 263 Clayton Road, Arden,
North Carolina.



LAPIDARY WORKSHOP

The workshop is open and the hourly rate for using one of these machines is \$4.00/hour. If you are interested in using one of these machines, call Gary Hert @ 794-9362. The Club has a 24" flat lap polisher that is available for rent. Please contact Gary for details.



Yellow shaded areas =suggested parking **McKissick Museum (in Red)**

McKissick Museum

McKissick Museum:

www.artsandsciences.sc.edu/mikissickmuseum; phone 803.777.7251; College of Arts and Sciences, University of South Carolina; 816 Bull Street, Columbia, SC 29208

Natural Curiosity: The University of South Carolina and the Evolution of Scientific Inquiry in the Natural World is an ongoing exhibit in the 3rd floor gallery. Humans possess a fascination with the natural world around them. From the 32,000-year-old cave paintings of horses in France to the giraffe stickers today's children paste into their activity books, we can see that humans are eager to see, touch, collect, and understand nature. Ongoing, 3rd floor gallery.

Chris CiCiMurri Curator of Natural Science. 803-777-2823; cicimurri@sc.edu

South Carolina State Museum

Eta Aquariids

Active from April 19th to May 26th Peak Night May 6 to 7

The Eta Aquariids are a strong shower when viewed from the southern tropics. From the equator northward, they usually only produce medium rates of 10-30 per hour just before dawn. From the equator to 25S they can produce rates of 40-60 per hour just before dawn at maximum. The longer nights in the southern hemisphere allows the radiant to rise higher in their sky. South of 25S the radiant altitude actually decreases. Activity is good for a week centered the night of maximum activity. These are swift meteors that produce a high percentage of persistent trains, but few fireballs.

www.scmuseum.org/ 803-898-4921 301 Gervais Street Columbia. SC 29201

Max Smith Donation

The Max Smith fossil collection was donated to the Columbia and Aiken Clubs. The specimens have been sorted and partially indentified. The collection has a wide variety of fossils ranging from whale bones from Aurora to bivalves and gastropods from Texas to crinoid and horn coral fossils from Kentucky and Indiana. There are also pliesticene mammal bones, geotized Mississippian fossils and other odds and ends. The fossilized geodes are silica psuedomorphs of an anhydrite pseudomorph of a crinoid or horn coral. The initial replacement of the fossil by anhydrite often “explodes” the shape of the fossil into an object that is barely recognizable because of the increased volume of the replacing anhydrite. There are literally hundreds of pounds of geotized fossils in the donation. Come to the next meeting to see some of the material and have an opportunity to take some home with you. Bring cash and or your check book.



EXECUTIVE MEETING MINUTES

April 2018 Board Meeting of Columbia Gem and Mineral Society, Inc.

The Columbia Gem and Mineral Society met on April 23, 2018 at the CGMS workshop at Grecian Gardens. Members and officers present were Ron Ahle, Angelia Valvasori, Sue Shrader, Susan Bloodworth, Jim Cobb, Benira Sutphin, and Dan Elswick. Vice-President Ron Ahle called the meeting to order at 7:00.

Treasurer's Report: Laura Tesh said that she had completed the 990 filing for the club and that the insurance for the workshop had been paid. **Facebook:** Dan said that it was important to network and share page on Facebook. **Membership:** Susan Bloodworth asked that if anyone sending emails noticed any need for corrections to please let her know. **Secretary:** no news. **Programs:** Sue Shrader said that there would be a Silent Auction for the upcoming May 21 meeting using specimens from the Max Smith Collection. Sue said there would also be a grab bag workday on May 8 at the workshop from 12:00 until 3:00. She said that she had slated Ron Ahle for a Program on caves for July's meeting and that one of the new members had volunteered to do a program later in the year. She said that some of the specimens from the Max Smith collection would be used for door prizes. Sue then discussed the Lapidary Scholarship Awards from a raffle in November. Three club members won: Sue Shrader, Chris Glass, and Susan Richardson. Sue said she just received notice about the winners so she would have to find out how members were to claim their prizes. Sue also said the club had won two scholarships, and she would send out notices to find those who might be interested in attending lapidary workshop at William Holland or Wild Acres. She said once she received notices from those interested that there would be a drawing for the scholarships. Those interested in going would have to pay lab fees, but tuition, room and board would be paid. Sue said she would need to know the names of those interested by May 5, 2018.

Workshop: Gary and Pat Hert had been doing research on available properties that would be good to use for a workshop. Pat had located several properties on Hook Avenue in West Columbia. Jimmy Armstrong informed club members that he had met with the City Manager of Cayce, but said that at the time, Cayce did not have provisions. Ron Ahle said that the club needed to set up a committee for relocating the workshop. The board discussed the move toward setting up this committee. Ron proposed that an Action Item be voted on by Executive Members that each Executive Member identify and locate properties available for use for a workshop and for members to send these to Ron, Sue and Jimmy so they could visually go out a look at these properties' potential for the workshop. Gary Hert also noted that the existing workshop, again, had a security issue, that the police had been called, and the President, Jimmy Armstrong had been sent a copy of the police report. **Liaison:** Jim Cobb just noted that Aiken and Columbia clubs continued to share support and communication. Jim said that he would start visiting other area clubs to promote the Columbia Gem and Mineral Show for 2018. **Historian:** Angela Valvasori had no news. **Field Trips:** Ron Ahle said we should check to see if Harleyville could bring in a dump truck load of dirt so our club could have a field trip there. Ron Ahle also said that the picnic went well. **New News:** Sue Shrader said she had some prong mountings that she would have assessed and put on the silent auction for club members.

Since there was no other business, Ron called for a motion to adjourn, which was voted on and the meeting adjourned at 8:00.

Respectfully submitted by
Susan Bloodworth

GENERAL MEETING MINUTES

April 16, 2018 General Meeting of Columbia Gem and Mineral Society, Inc.

The Columbia Gem and Mineral Society, Inc. held the monthly club meeting on the 3rd Monday, February 19, 2018, at the McKissick Museum at 816 Bull Street, Columbia, SC 29208 on the USC campus. President Jimmy Armstrong called the meeting to order at 7:36 p.m.

President's Report: Jimmy welcomed all members and expressed hope that all made it through storms. He thanked Sue Shrader for door prizes, and Jim Cobb, Tom Cox and Naomi and Gary Cadle for refreshments. Jimmy said he was planning to meet with Cayce's city manager to discuss relocation of workshop. **Vice President's Report:** Ron Ahle reminded members of the upcoming field trip to Graves Mountain for April 27-29. He discussed the Harleyville Dixie Mineral Field Trip on May 19. He talked about the 15th Annual Western North Carolina Rockhound Roundup for July 22-29, 2018. Then Ron discussed the plans for the Max Smith Collection donated to the club. He said the second organization session had taken place and thanked those who helped. Next, the collection needed to be assessed for door prizes, silent auction, show and tell, salt mine, and grab bags. **Membership and Secretary Report:** Susan Bloodworth reminded members to update membership and get their membership cards. She also noted that the club has 128 active members for 2018. **Programs:** Sue Shrader reminded members of the upcoming picnic at the workshop for April 22 from 1:00 until 5:00 and told members to bring food and specimens to swap. She asked for volunteers for food and refreshments for the next meeting. She said there would be a grab bag work day for May 8, 2018 at the workshop from 12:00-3:00. She announced that the program for the evening would be a sharing of specimens from members and awards would be given for the prettiest and ugliest specimens. Sue also said that we needed ideas for programs for upcoming meetings. Ron Ahle said he would be doing a program on caves. Jason Stuart said he would talk to a professor about a future program. **Facebook:** Dan Elswick asked for any news or photos related to field trips, collections, or specimens that members would like to share on Facebook. **Workshop:** Gary Hert reminded members that he was off on Sunday, Mondays, and Tuesdays for those who would like to use the workshop. **Sunshine:** Abby said all were doing well. **Rocky Trails:** All looked great, and new officers' information would be updated. **Liaison:** Jim Cobb said Aiken and Columbia Clubs continue to maintain a good relationship and helped to promote shows. **Historian:** Angela Valvasori had no update. **Auctioneer:** Benira Sutphin had no update.

There was no additional old or new business. Jimmy called for a motion to adjourn and the members voted and moved to adjourn for door prizes and the program at 8:00.

Program: The program was a show and tell where members brought in specimens that were evaluated for prettiest and ugliest. Awards were handed out.

Respectfully submitted by
Susan Bloodworth



Dixie Mineral Council Field Trips

The Southeast Federation of Mineralogical Societies, Inc



The Friendly Federation - Founded in 1976 to serve
DMC Program of the SFMS Field Trip Committee
Copyright © All rights reserved.

An Official Field Trip of the Lowcountry Gem & Mineral Society (Macon, GA) (HOST)
An Official Field Trip of the Columbia Gem and Mineral Society

Saturday, May 19, 2018
10:00 AM til 3 PM EDT
119 Railroad Ave
Harleyville, SC 29448

No limit on Attendees; No Registration Required, No Fee

TRIP: While fossil hunting at the LaFarge Quarry is no longer permitted, collecting is permitted in a lot next to Old Town Hall in Harleyville, SC. The material is fossil-bearing dump material brought in from the nearby LaFarge Quarry. The collecting site is approximately the size of a tennis court.

COLLECTING: The material from this quarry cuts 80 feet through the Harleyville Formation (Late Marine Eocene) and the Cross Formation (Middle Marine Eocene). You will find fossil shark teeth, bones, brachiopods, and other marine fossils.

BRING: Digging tools, shovels, screens, buckets, work gloves, and don't forget weather protection gear, water, and snacks. **CHILDREN:** This field trip is suitable for children but they must be supervised at all times.

PETS: Pets are allowed as the site is within city limits; leash is required at all times.

FACILITIES: As the site is within city limits, nearby facilities are available at or near the site.

REQUIREMENTS: No specific requirements are necessary for the site. Safety equipment like hard hat, safety glasses, steel-toed boots, gloves, etc. are not required.

DIRECTIONS AND WHERE TO MEET:

From I-26, take Exit 177 toward SC 453 to Harleyville.

Go 1.3 miles (past the LaFarge Quarry).

Turn left onto West Main Street (Hwy. 178) and go 0.3 mile.

Turn right onto Railroad Avenue.

Meet at 119 Railroad Avenue in adjacent to the old Harleyville Town Hall building

CONTACT: Lawrence Moss, Field Trip Coordinator, if you have any questions. Phone number 843-819-0726. Email: Jorel611@yahoo.com.



Dixie Mineral Council Field Trips

The Southeast Federation of Mineralogical Societies, Inc



The Friendly Federation - Founded in 1976 to serve
DMC Program of the SFMS Field Trip Committee
Copyright © All rights reserved.

An Official Field Trip of the Middle Tennessee Rockhounds (Nashville, TN) (HOST)
An Official Field Trip of the Columbia Gem & Mineral Club

Saturday June 23, 2018
10AM – 2PM CST
Coon Creek Science Center
McNairy County, Tennessee
Limited to 35 participants
Pre-Registration Required
FEE \$15

TRIP: Within the grounds of Coon Creek Science Center, located in rural McNairy County, Tennessee, lies one of the most important fossil sites in North America. Acquired by the Memphis Museum System in 1988, this property contains a treasure lode of superbly preserved Upper Cretaceous marine shells and vertebrate remains left there 70 million years ago when the water of the Gulf of Mexico receded. Coon Creek fossils are mostly marine invertebrates (clams, snails, oysters, shrimp etc.) that are about 75 million years old. They are found in an unconsolidated clay/sand matrix. Coon Creek fossils are very unique because of the state of their preservation. They are original material – the shells have not turned to stone. They are also very abundant with a huge variety of species. You will be able to collect in a “quarry” area and surface collect from Coon Creek’s stream bed (as guided by the museum staff). You will be “carving” fossils out of the Coon Creek formation by looking through chunks of the formation that have been loosened from the quarry. Participants will use a curved linoleum knife for collecting. Museum instructors will demonstrate how to collect your fossils and how to clean them. Everyone will find fossils! Some of the fossils are very fragile. You keep what you find with a few exceptions. If you find a specimen that would be beneficial for the Museum’s collection or research, the Museum reserves the right to keep that fossil. See also: http://www.memphismuseums.org/coon_creek-overview

Program – Field Paleontology (4 Hours): Introduction – 30 minutes; Collecting Session (quarry and surface) – 2 Hour; Lunch – 30 minutes; Clean and Identify Fossils - 45 minutes

BRING: Lunch (there is no food nearby & no vending machines at the center), water,

boots or shoes that can get wet/dirty, poncho, towel, change of clothes & shoes (for return home), bucket, small digging tool (optional; linoleum knives will be furnished), roll of aluminum foil (to protect your finds), and bug spray.

FEE: \$15 per participant

REGISTRATION: Pre-Registration Procedure: After you supply required information by email to Middle Tennessee Rockhounds (MTR), MTR will assign you a registration number by return email – bring registration number the day of the fieldtrip. [Instructions for mailing the \$15 per participant fee will be included with registration number. Registration is not official until fee is received.] Once registration reaches 35, registration is closed. **To register**, email Fieldtrip@rockhound.org with: Name(s; Last, First), Address/ City/State, Phone (include cell for day of trip), club, age of children (must be 10 to 17 years old and accompanied by a parent or a guardian). Registration requests are limited to family members, couples, and significant others; non-related individuals must email separate registration requests. ***All persons who attend DMC fieldtrips (including children), must be members, in good standing, of an SFMS club (who has provided their membership with SFMS liability insurance).***

CHILDREN: Yes (***no children under 10 per Coon Creek Science Center***); no pets

FACILITIES: Bathrooms and showers are available. There are no restaurants or stores nearby.

RAIN OR SHINE: The Science Center will cancel only if weather is threatening.

DIRECTIONS AND WHERE TO MEET

Address: 2985 Hardin Graveyard Road, Adamsville, TN (approximately 2.5 hours from Nashville; approximately 2 hours from Memphis). Please arrive by 9:45am CST.

Directions: Click on [Coon Creek Science Center Map](#), then click Directions in upper left-hand box and enter your city. See also: http://www.memphismuseums.org/coon_creek-map.

Lodging & Camping: Rooms are available in nearby Henderson and Savannah, Tennessee. Campsites are available at Chickasaw State Park (<http://tnstateparks.com/parks/about/chickasaw>) and Mousetail Landing State Park (<http://tnstateparks.com/parks/about/mousetail-landing>).

CONTACTS:

Mike Mangrum, 615-587-1733; TennRockGuy@gmail.com

Randy Gentry, 615-566-8482; RGentry@biscanconstruction.com (no calls after 10pm CST; leave message if no answer);

To register for field trip, email Fieldtrip@rockhound.org.

AREA SHOWS

May 25-27—Salem, VA: Annual show; Treasures Of The Earth Gem & Jewelry Shows, Salem Civic Center; 1001 Boulevard; Van Wimmer - Show Director, 5273 Bradshaw Rd, Salem, VA 24153, (540)-384-6047; e-mail: vanwimmer@comcast.net; Web site: www.toteshows.com

15th Annual Western North Carolina Rockhound Roundup July 22nd - 29th, 2018

**The largest annual Rockhound gathering in the state!
Hosted by the Mountain Area Gem and Mineral Association**

This event will be based at Camp Stephens. This property is located just outside the city of Asheville off of Interstate 26. The camp is just 3.5 miles from the Interstate but located in a secluded wooded area on the French Broad River. There is room for many RV's and tent campers. There is a large indoor pavilion with two bathrooms, two showers (note that the showers and bathrooms have been renovated and are in excellent working now) a kitchen, electricity and water for the outside campers and inside the pavilion. There are large campfire pits for use by campers. I will also have two porta potties' on site for extra bathrooms. There will be a dumpster on site for all garbage (be sure to bag your garbage before putting it in the dumpster). Campers will be able to swim, fish, canoe, snorkel, etc. in the river. The camp area is completely wooded so there is plenty of shade. We will be allowed to use the numerous tables provided in the pavilion to set up and swap/sale our rocks and minerals. Three miles from the camp are numerous gas stations, a mall, restaurants, motels/hotels and more. Campers are welcome to begin arriving Sunday afternoon the 21st to set up camp and get ready for the week's events.

Agenda: We have coordinated this event to coincide with the numerous gem and mineral shows that are taking place in Franklin, North Carolina the same week. I am working on a variety of new mines to visit this year and they will be added to this announcement as I confirm their availability. There will be directions given to all attendees, and campers and participants can visit any of the mines listed here, any day of the roundup as many times as they like. I will have release forms and take payment for some mines at the camp and will provide instructions as to where to pay for some mines. Mines we will have full access to during the week of the roundup:

Crabtree Emerald Mine in Mitchell County, NC. Fee: \$10 for those camping at the roundup, \$15 for all others. Release forms and payment will be collected at the camp prior to the dig. Directions will be provided at camp. **Sinkhole Mine** in Mitchell County, NC. No fee, directions will be provided at camp. **Little Pine Garnet Mine** in Madison County, NC. Fee: \$25 per person. Forms and payment are handled at the office of the Sandy Bottom Trail Rides before proceeding to the mine. Directions will be provided at camp. **Sharpe's Emerald Prospect** in Hiddenite, NC. Fee \$20 for those camping at the roundup, \$25 for all others. Release forms and payment will be collected at the camp prior to the dig. Directions will be provided at camp. More mines to be added!

We will be visiting the numerous gem and mineral shows in Franklin, NC daily.

There will be demonstrations on wire wrap, flint knapping, cabochon making, etc. Display tables will be available to show off your favorite specimens. The members have a cookout in the evening and a big campfire. There will be tables setup throughout the week for people to sell and trade their rocks and minerals, gems and jewelry.

Saturday the 28th; THE FEAST! Everyone should bring a dish or desert and something to drink. If you need to cook something for the meal, you should start cooking around 1:00 to be ready to eat around 3:00.

Fee for Roundup: \$40.00 per person. Vendors, \$60.00. This covers all 7 days of the Roundup. Kids 12 and under are free.

If you plan to only attend a few of the days, the cost will be \$10.00 per day.

Accommodations: Camping on the Camp Stephens property is included in the above cost.

Directions: Take exit 33 off of Interstate 26 just outside of Asheville NC. Go west on Brevard Road/Hwy. 191. Drive 3.5 miles to Clayton Road on the left, turn left and drive 2/10ths of a mile to the entrance to Camp Stephens on the left. You will see a large MAGMA sign at the entrance. If coming from Exit 37 off I-26, turn right onto Clayton Road, the event will be on the right. Address: 263 Clayton Road, Arden, NC.

There are two KOA campgrounds in the area:

East Asheville KOA: reservations:1-800-562-5907, information: 828-686-3121

West Asheville KOA: reservations: 1-800-562-9015, information: 828-665-7015 For those who would rather stay in a hotel in the area, there are several hotel/motels 3.5 miles from the camp at the I-26 exit. For more info on these motels: Country Inn and Suites: 845 BREVARD RD, Asheville, NC 28806 (828) 670-9000 Rodeway Inn and Suites: 9 Wedgefield Drive, Asheville, NC 28806 (828) 670-8800 Fairfield Inn and Suites: 11 Rocky Ridge Road, Asheville, NC 28806 (828) 665-4242 Hampton Inn: One Rocky Ridge Road, Asheville, NC 28806 (828) 667-2022 Comfort Suites: 890 Brevard Road, Asheville, NC 28806 (828) 665-4000.

This roundup is open to all clubs and anyone visiting the area from out of town who would like to attend. Remember to bring plenty of rocks and minerals to trade, sell, and show.

For more information, contact Rick Jacquot at: 828-779-4501 or email rick@wncrocks.com

The Columbia Gem and Mineral Society is an organization of persons associated together to promote popular interest in and to provide means for the exchange of knowledge of the Earth Sciences – Geology, Mineralogy, and Paleontology – and of the related Arts – Lapidary and other. The Society is a member of the Southeast Federation Mineralogical Societies Inc. and affiliates of the American Federation of Mineralogical Society Inc.

2017 OFFICERS and COMMITTEE CHAIRPERSONS

EXECUTIVE COMMITTEE

President.....Jimmie Armstrong...(803) 438-6000.....rvrdvr29078@gmail.com
 Vice President.....Ron Ahle.....419-2923.....the bears@earthlink.net
 Treasurer.....Laura Tesh.....731-4760.....lauralaw@bellsouth.net
 Secretary..... Susan Bloodworth.....604-1045.....susanbloodworth374@att.net

COMMITTEE

MembershipSusan Bloodworth.....604-1045.....susanbloodworth374@att.net
 Auctioneer.....Benira Sutphin.....315-5250.....benira@bellsouth.net
 Club Liaison.....Jim Cobb.....794-0045.....jocobb3@bellsouth.netFaceting
 Guild.....Fred Meetze.....345-7463.....fredfacator@gmail.com
 Facebook.....Dan Elswick.....252-2346.....elswickdan@yahoo.com
 Field Trip.....Open
 Historian.....Angela Valvasori.....419-2923.....thebears@earthlink.net
 Librarian.....Sheila Frame.....739-0682.....snframe@aol.com
 Newsletter Editor.....Ron Ahle.....419-2923.....thebears@earthlink.net
 Program.....Sue Shrader.....736-9317.....sue_shrader@mindspring.com
 Rookie RockhoundOpen
 Show.....Michael Montebello.....791-9921.....mauimonte@hotmail.com
 SunshineAbbie Gates.....799-9279.....2rustygates@att.net
 Website.....Michael Montebello.....791-9921.....mauimonte@hotmail.com
 Workshop.....Gary Hert.....794-9362.....gchert@hotmail.com



CGMS Website

Please visit our Website:

<http://www.cgams.org>

Webmaster: Mike Montebello

Monthly Meeting

Except for January, the meetings are held the third Monday of each month at the McKissick Museum's Auditorium, on the USC campus. Socializing and refreshments at 7:00 pm; Meeting at 7:30 pm. Please enter from the Horseshoe entrance.

Executive Board Meetings:

Except for January, the meetings are held on the fourth Monday of each month at Grecian Gardens, 2312 Sunset Blvd., and West Columbia. Meal is at 6:30pm. Meeting is at 7:00 pm.

**Rocky Trails
PO Box 6333
Columbia, SC 29260**