



Rocky Trails



March 2022

Volume 16 Issue 3

The Newsletter of the Columbia Gem and Mineral Society

PRESIDENT'S MESSAGE

Hi Folks,

Welcome to all current and new members. We are going to have our general meeting in person on March 21 for the first time in two years. We have been patiently waiting for this day when the COVID threat has dropped to a level that allows us to meet indoors safely and we are ready! The program will be in a group participation format and we are looking forward to hearing from our members and getting caught up! We are currently planning to have our 2022 annual show and a spring picnic on May 1st at Sesquicentennial SP (see page 2). Hopefully general meetings at McKissick Museum will resume in May, 2022.

Worth restating, we are looking for volunteers to take organizational duties such as President, Secretary, Fieldtrip Chair and others. Our current slate of officers has committed to staying on through April at which time some, including myself, will step down. Having officers is critical for our club to function. As it stands, we have a lot of long time members that have been officers for many years who are ready to hand over their positions. Based on your interest in the club, this is an opportunity to lead a very sound organization into a future that can make the club more enjoyable and rewarding for you. If you're interested in being an officer or a project chair, please contact one of the officers. We need help!

Be sure to note upcoming events. Of special interest is the Columbia bottle show. The club is planning to have a table at the bottle show to provide information about our club and recruit new members. As I mentioned in the last newsletter, the Dixie Mineral field trips have been reinstated for 2022 and I would encourage folks to go on some of those trips. Check the pages within this newsletter for more details on these trips. Also, mark your calendars for a field trip to 40 Acre Rock on Saturday, April 9th.

Stay in touch and don't take any risks.

Sincerely,
Ron

NEXT MEETING

March 21, 2022

We will have the March CGMS meeting of 2022 **in person** at Hope Church located at 2609 Seminole Road. Easily accessible from I-26 or I-20 (using a map or GPS is easier than giving directions since there are so many ways to get there). It is in that triangle between Broad River Road, St. Andrews Road, and Malfunction Junction (where I-20 & I-26 intersect).

Use the side door (close to the main part of the parking lot). We will meet in the Fellowship Hall.

PROGRAM:

The program will be "What have you found, made, or bought since March 2020". This program will be a membership participation program where members are encouraged to share their rock and gem experiences and acquisitions they have had since the last time the club was able to meet in person.



CLUB PICNIC

Come join us at the club picnic which will be held at Sesquicentennial State Park at Picnic Shelter No. 1 on **Sunday May 1st 11:00 to 3:00**. Because of COVID-19 we will ask that each member who comes to the picnic abide by CDC guidelines for social distancing. We want this event to be safe for everyone. While at the park, there are opportunities for outdoor recreation such as walking trails, hiking, and bird observation, kayaking and fishing if you would like to extend your day and take advantage of the park. More details to come.

Picnic Shelter No 1 at Sesquicentennial Park



Social Media Helps our Club Stay Social!

To join the discussion with other CGMS members on Facebook, look under the Community tab, where you will find the Columbia Gem and Mineral Society Member Group. When you ask to join the Group, please be sure to agree to follow the rules: Be Kind, No Hate Speech or Bullying; and No Promotions or Spam. Please feel free to add photos of your interesting finds, share your Jewelry making, or your field trip experiences. Recent posts shared the information on the recent earthquake, as well as the Graves Mountain Fall Open House...

To access our web site, just type "CGMS.ROCKS" in your internet browser or you can search for Columbia Gem and Mineral Society in Google.

The Club's website is: www.cgms.rocks



[McKissick Museum](#)

Hours

Monday-Friday: 8:30 a.m.-5:00 p.m.; Saturday: 11:00 a.m.-3:00 p.m.; Closed Sundays. Masks are required inside the museum.

McKissick Museum 2022 www.artsandsciences.sc.edu/mikissickmuseum;

Invitation to Explore

Ongoing through Saturday, May 28, 2022

Natural Curiosity: The University of South Carolina and the Evolution of Scientific Inquiry in the Natural World

Ongoing through Saturday, May 28, 2022

Wild Bees: Photography by Paula Sharp & Ross Eatman

Ongoing through Friday, July 15, 2022

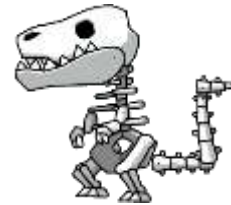
South Carolina State Museum
<http://scmuseum.org/events/upcoming-events/>
301 Gervais Street
Columbia, SC 29201
803-898-4921

As Covid-19 social distancing and face cover related guidance continues to be updated by the State of South Carolina (from the Governor's Executive Orders, the S.C. Department of Health and Environmental Control and AccelerateSC), and the Center for Disease Control (CDC), the Museum will update our policies accordingly. For health and safety the museum will be **managing our capacity** in the galleries, planetarium, 4D theater and observatory. Advance online ticket purchases are encouraged, especially if you wish to see planetarium and/or 4D shows.

Face coverings are encouraged throughout the galleries and REQUIRED in the planetarium, 4d theater and observatory for ages 3 and above.

New Hours of Operation:

Mon: CLOSED.
Tue – Sat: 10 a.m. to 5 p.m.
Sunday: 12 to 5 p.m.



Boeing Observatory Telescope Livestream Every Saturday Night on Facebook.

Join State Museum Boeing Observatory staff for a virtual look at the night sky (including the Moon) from a telescope streamed on Facebook Live! Weather permitting, staff will livestream a telescope feed from the museum and be available to answer questions in the comments.

**First Sunday Sponsored by BlueCross BlueShield of South Carolina
Sun., April 3 from 12 – 5 p.m.**

General admission is only \$1 for guests on the first Sunday of every month! PLUS enjoy 4-D movies and/or planetarium shows, for only \$5 each!

Virtual Planetarium Sky Tour – 2nd & 4th Thursday via Facebook

Planetarium manager, Liz Klimek, takes viewers on a virtual trip through the universe to explore planets, star clusters, constellations and more

<https://www.facebook.com/scstatemuseum>

Fieldtrip News

The third field trip of 2022 will be a Dixie Mineral lead field trip to Bartow County, Georgia on April 30th to a hard rock quarry to collect blue quartz and other minerals. Weather permitting, this looks like a good trip to attend with free access and everybody finds minerals. The area is perfect for a weekend with a visit to the TELUS Science Museum as a possible additional destination. There is also a trilobite location in NW Georgia that could be visited (as stated in a previous Rocky Trails), if you know you are going on the fieldtrip and would like to know the location of the trilobite site please email me about your interest). Below is an example of blue quartz that you might find on the fieldtrip.



Quartz collected by Ron Ahle

Last year, Ron led a small group of folks to a rock shelter and waterfall at Forty-acre Rock Heritage preserve. Back by popular demand, Ron will again lead interested folks to this treasured location and walk to other parts of the preserve with waterfalls, granitic dome and an ancient beaver pond. The fieldtrip date is set for April 9th. We will meet at 9:30 at the lower parking lot on Nature Preserve road. Bring lunch and something to drink and be prepared to walk 3 to 4 miles. We will take our time and enjoy rock formations, wildflowers and waterfalls. Below are photos that I have taken from the location. [Forty Acre Rock Heritage Preserve \(wildlifesouth.com\)](http://wildlifesouth.com)



EXECUTIVE MEETING MINUTES

February 28, 2022 Board Meeting of Columbia Gem and Mineral Society, Inc.

The Columbia Gem and Mineral Society held its executive board meeting on February 28, 2022 by Zoom. President Ron Ahle called the meeting to order at 7:10 PM. In attendance were Ron Ahle, Angela Valvasori, Dan Elswick, Gordon Murphy, Jim Cobb, Tom Daniels, Steve Coker and Cheryl Coker.

Club Picnic: Date Sunday April 24 approved (this was later changed to May 1). Ron suggested Sesquicentennial State Park, everyone agreed with him. He will reserve a picnic area.

Club meeting locations: Sue will check on the McKissick Museum to find out when the club can go back to meeting there. Ron suggested in-person meetings. He hopes for more member participation. He will ask Mandi W. to reserve a room at her church for March. Sue does not have a program lined up. It was suggested that Susan Richard and Cat Sawyer could give a program on dinosaur fossils they dug in Wyoming.

Bottle Show: Saturday April 23 at the Jamil Temple. Sue will ask Mart Vollmer with the Bottle Club about the club setting up at their show. The club will have an 8 foot table. Ron and Angela offered to help at the show.

Historian: Gordon Murphy no report.

Treasurer: Angela gave a treasurer's report. She paid the SFMS Insurance which covers the Gem Show.

Show: Angela and Ed Simpson (at the Jamil Temple) are working on a new show contract. A space is reserved for the club on Nov. 17 to 20, 2022. John Narung and Sharon Sterrett names will also be on the contract.

Facebook: A description and photo of the Show Grand Door Prize is needed to put on FaceBook. Sue will place a show flyer on Facebook. She will also send a copy to Steve for the website.

Several pieces of land with buildings were discussed for purchase of a future club workshop. A couple of suggested properties have been sold. Cheryl explained some of the zoning restrictions. She will check the MLS for more property listings using specific search criteria. It will be helpful for the club to decide on the following considerations: property with or without buildings, zoning, location, distance from town and financing.

Ron Ahle adjourned the meeting at 7:58 PM.

News Worth Digging Up

Enormous Crystal Geode Discovered in Spain

Source: *Geology in*, Date: November 13, 2016

A gigantic cave of crystals was discovered in an abandoned silver mine in Spain. The geode, which is eight meters (26ft) long, 1.8 meters (6ft) wide and 1.7 meters (6ft) high is crammed full of gypsum prisms and is big enough for ten people to sit in. Javier Garcia-Guinea, a geologist from the Spanish Council for Scientific Research (CSIC) in Madrid, described the cave as having .5 m (3.5ft) "crystals that are absolutely transparent and perfect." The giant geode may have formed at the same time as a geological event called the Messinian salinity crisis. At this time, about six million years ago, the Mediterranean Sea evaporated, depositing thick layers of salts. The same, salt-saturated fluids could have filled up the Spanish geode, which lies near the coast. The drying out of the Mediterranean was probably caused by a restriction in the straits of Gibraltar, the sea's only connection with rest of the Earth's oceans. To amazing pictures of the geode go to: [Enormous Crystal Geode Discovered in Spain \(geologyin.com\)](http://geologyin.com)

5 Strange Things Uncovered in the Melting Permafrost

Source: *INSH*; Date: October 18, 2018

Author: Mark Hand

As ancient Arctic glaciers melt and retreat from their centuries old positions, the permafrost is revealing secrets buried for thousands of years. Each new discovery is not only a portal to the past but a clue to the mystery of what life was like on Earth before and during the time when people came along. One such discovery, a 12,400 year old puppy uncovered in Russia, was recently thawed by scientist who conducted an autopsy. The pup's brain was found to be "surprisingly well preserved" and some researchers have suggested cloning the dog. Researcher Pavel Nikolsky told the *Siberian Times* the brain was 70-80% preserved and "the first obtained brain of a Pleistocene canid." Not only did ancient human ancestors have dogs running around, they had to worry about cave lions. Two well preserved baby lions were found in the Sakha Republic in Russia in June 2015 and are thought to be between 10,000 and 300,000 years old. A tomography scan revealed that the cubs had nothing in their stomachs at all, which indicates that they could not have been more than a few days old when they died. In Alaska, Arctic ground squirrels are being found that are believed to be 1.8 to 2.5 million years old. The area in which ancient Arctic squirrels have been found have also produced large seed preserves and plant samples, providing insight into the flora and fauna of ancient times and suggestions on what kinds of vegetation would've been common millions of years ago. Back in 2003, researchers in the Yukon near the Alaskan border found the remains of a horse believed to be between 560,000 and 780,000 years old. Thanks to advancing science, the horse provided the old DNA ever sequenced. Last but not least, "Masses of bacteria and other microbes, some of which the world hasn't seen since the Middle Pleistocene, will make their way back into the environment." What if one of these sleeping microbes is a deadly contagion for which we have no immunity? To get the answer and others you might think have or just to and further explore discoveries in the melting permafrost click on: [5 Strange Things Uncovered in the Melting Permafrost \(insh.world\)](http://insh.world)

Membership News

We currently have 75 paid members. For all the new members, welcome to our club.

As a reminder, the board voted that all members who paid dues for 2020 will have a 50% off membership in 2022. All others will be expected to pay full dues for 2022.

CGMS Name Tag

Would you like to have a CGMS name tag? The Trophy and Gift Shop in Cayce has the template, shown below, for the CGMS name tags. They are magnetic so there are no pins. If you would like one, you can contact them by phone or via their website, tell them you would like a CGMS name tag and give them the name you want on it. Or you can contact Angela Valvasori (see contact information on last page) and she will have them made. The cost is \$10. The Trophy and Gift Shop 911 12th St., Cayce SC 803-796-7710, trophyandgiftshop.com. We also have patches for \$10. Contact Angela if you would like one.



**49th Annual
COLUMBIA, SOUTH CAROLINA
BOTTLE CLUB SHOW & SALE**
Saturday, April 23rd 2022

DONATION AT DOOR REQUESTED ALWAYS A SELL OUT 166 TABLES LAST YEAR WITH ROOM TO GROW!

Jamil Shrine Temple
206 Jamil Road
Columbia, S.C.
29210

**SOUTH CAROLINA
BOTTLE CLUB**

Saturday:
9:00 am to 4:00 pm
Dealer Set-up Saturday:
7:00 am to 9:00 am

Contact: Marty Valveson 803.679.8953 or martyvalveson@aol.com
or Art Giese 803.646.1503 or artgiese@earthlink.net or visit www.columbiabottleclub.com

**\$1.00
Off with this
Ad**

54th Annual Gem, Mineral, & Jewelry Show
Fri Nov. 18, 10:00 - 6:00.
Sat. Nov. 19, 10:00 - 6:00.
Sun. Nov. 20, 12:00 - 5:00.

Jamil Temple, 206 Jamil Rd. Columbia, SC 29210
\$5.00 for adults, Sixteen & under free.
All military & their dependents free.
803-736-9317 www.cgms.rocks

www.facebook.com/cgms.rocks

Congaree National Park.

Astonishing biodiversity exists in Congaree National Park, the largest intact expanse of old growth bottomland hardwood forest remaining in the southeastern United States. Waters from the Congaree and Wateree Rivers sweep through the floodplain, carrying nutrients and sediments that nourish and rejuvenate this ecosystem and support the growth of national and state champion trees.

Currently, Portions of Visitor Center Remain Closed due to COVID-19

The exhibit area and auditorium in the Visitor Center remain closed. All hiking & paddling trails, canoe launches, restrooms, bookstore, picnic shelter & picnic grounds remain open.

The park's campgrounds are open by reservation. Some sites at the Longleaf Campground & portions of the Visitor Center remain closed. The visitor center closing does not include the restrooms or the bookstore (open 9:00 am to 4:00 pm). All hiking & paddling trails, canoe launches, restrooms & the picnic shelter remain open.

The park's backcountry areas remain open, including the following trails: Cedar Creek Canoe Trail, Kingsnake, Oakridge, River, Weston Lake Loop, Bates Ferry, and Fork Swamp. Visitors wanting to come to the park are encouraged to email [e-mail us](#) for guidance about how to access the park's backcountry

-



-

Photo by Ron Ahle

**Graves Mountain
Rock Swap and Dig
May 20th - 22th, 2022
Lincolnton, Georgia**

As of this posting, the dig is on for May, 2022 and back to normal. No reservations needed. Current covid safety precautions must be observed. Masks must be worn when at food and vending booths. Social distancing must be adhered to. If something changes, it will be posted here.

The mountain will be open to collecting from 8 am to 6 pm each day. All attendees must stop at the welcome table to sign a liability release and make a contribution/donation to help with the cost of providing porta johns and golf carts. The dig will end and everyone must be off the mountain by 6:00 p.m. each day.

There will be an area in the parking lot for vendors to sell and trade minerals. If you would like to setup a booth, contact Jr. at the phone number listed below. Hot food and drinks will be available for purchase on the mountain all three days.

There will be an area in the parking lot for vendors to sell and trade minerals. If you would like to setup a booth, contact Jr. at the phone number listed below. Hot food and drinks will be available for purchase on the mountain all three days.

THIS DIG IS OPEN TO ALL CLUBS and ROCKHOUNDS!

GRAVES MOUNTAIN CODE OF CONDUCT!

Park your vehicle in the designated area at the end of the paved access road.

ALL pets must be kept under control and on a leash. The caretaker, Jr. Norman has final and absolute say as to where you may safely work. Ladders or power tools of any kind will not be allowed. (HAND TOOLS ONLY!). STAY AWAY FROM ALL HIGH WALLS! NO RAPPELLING OFF OF ANYTHING! NO ONE IS ALLOWED TO DRIVE THEIR VEHICLE ON ANY PART OF GRAVES MOUNTAIN BEYOND THE PARKING AREA! (The caretaker must accompany anyone driving beyond the parking area!) EVERYONE NEEDS TO BE OFF THE MOUNTAIN BY 6:00 p.m. (Absolutely no one is allowed on Graves Mountain after dark.)

DIRECTIONS: From Washington Georgia, drive east 11 miles on SR-378, look for mine entrance on right. From the Hardee's in Lincolnton, Georgia, drive approximately 5-1/2 miles west on SR-378. Look for the sign at the entrance to Graves Mountain on the left side of the road.

Motels and Camping:

Cullars Inn, Lincolnton, Georgia, 706-359-6161
Soap Creek Lodge, Clarks Hill Lake, Lincolnton, 706-359-4100
Elijah Clark State Park, 706-359-3458 / 800-864-7275

**19th Annual Western North Carolina
Rockhound Roundup
July 24th – 31st, 2022
Hosted by: M.A.G.M.A. and Jacquot & Son Mining**

This event will be based at Camp Stephens. This property is located just outside the city of Asheville off of Interstate 26. The camp is just 3.5 miles from the Interstate but located in a secluded wooded area on the French Broad River. There is room for many RV's and tent campers. There is a large indoor pavilion/building with two bathrooms, two showers, a kitchen, electricity and water for the outside campers and inside the pavilion. Campers will be able to swim, fish, canoe, snorkel, etc. in the river. The camp area is completely wooded so there is plenty of shade. Three miles from the camp are numerous gas stations, a mall, restaurants, movie theater, motels/hotels and more.

Campers are welcome to begin arriving Sunday morning to set up camp and get ready for the week's events. Do not arrive before Sunday morning on the 24th as other people will be using the camp before we arrive.

This is the yearly gathering of our club and we welcome all to come join us for a week of fun. Rockhounding, swapping, selling, trading rocks and minerals. Good food and great people!

Agenda:

We have coordinated this event to coincide with the numerous gem and mineral shows that are taking place in Franklin, North Carolina and groups will be visiting the shows daily. Throughout the week, we will conduct field trips to a selection of local mines and gem shows in the area. Instructions and directions will be provided for everyone, so no one gets lost during the trips. There will be fee discounts for attendees collecting at the Crabtree Emerald Mine and other mines in the area.

There will be tables setup (first come, first serve) at the pavilion for people to sell and trade their rocks, minerals, gems and jewelry. I suggest bringing your own tables to be sure you have what you need to sell.

Saturday the 30th; THE FEAST! Everyone should bring a dish or desert and something to drink. If you need to cook something for the meal, you should start cooking around 1:00 to be ready to eat around 3:00.

Fee for Roundup: \$100.00 per person, this covers all 8 days of the Roundup. Full use of the camp area and facilities. Kids 12 and under are free. Vendors who wish to set up and sell at the pavilion, add \$50, so, \$150 for 8 days. If you plan to only attend a few of the days, the cost will be \$20.00 per day.

Send check or money order to:

Richard Jacquot
PO Box 542
Leicester, NC 28748

Accommodations: Camping on the Camp Stephens property is included in the above cost.

Directions: Take exit 33 off of Interstate 26 just outside of Asheville NC. Go west on Brevard Road/Hwy. 191. Drive 3.5 miles to Clayton Road on the left, turn left and drive 2/10ths of a mile to the entrance to Camp Stephens on the left. I will have a large MAGMA Roundup sign at the entrance.

This roundup is open to all clubs and anyone visiting the area from out of town who would like to attend. You do not need to be a member of any club to attend. We welcome everyone. Remember to bring plenty of rocks and minerals to trade, sell, and show.

For more information, contact Rick Jacquot at: 828-779-4501 or email rick@wncrocks.com

AREA SHOWS

Due to the coronavirus, shows may be cancelled, postponed, or rescheduled. Show dates listed on this site may have been changed without notifying us. To verify the accuracy of a show date go to the show's website or contact them directly.

March 25- 27, 2022, Hickory, NC

Annual Gem, Mineral, Fossil, and Jewelry Show
Catawba Valley Gem & Mineral Club, Inc.
Hickory Metro Convention Center
1960 13th Ave. Drive SE, Hickory, NC 28602 off of I-40, Exit 125
cvgmcsecretary@aol.com or 828-303-1448 for info.

March 18-20, 2019, Marietta, GA

Annual show; Bellpoint Gem Show
Cobb County Civic Center, 548 S. Marietta Pkwy.
*Fri 10AM-6PM *Sat 10AM-6PM Sun 10AM-5PM
Email: mbellpoint@gmail.com; Website: www.bellpointpromotions.com

April 1-3, 2022, Raleigh, NC

Annual show; Tar Heel Gem & Mineral Club
State Fairgrounds, 1025 Blue Ridge Rd, Kerr Scott building
Admission is free for all who wish to attend! www.tarheelclub.org

April 9, 2022, Hendersonville, TN

7th Annual Dig It! Gem, Mineral & Fossil Festival
Annual show of the Middle Tennessee Rockhounds,
Senior Citizens Center Of Hendersonville, 197 Imperial Blvd. Free admission;
Email: wramsey205@comcast.net; <http://www.rockhound.org/swap>

2022 ASHEVILLE, NC GEM SHOWS



Dates:
March, 18th – 20th, 2022
June, 17th – 19th, 2022
September, 16th – 18th, 2022
December, 9th – 11th, 2022



Hours:
Friday and Saturday 9am – 5pm
Sunday 10am – 4pm



Location:
Camp Stephens
263 Clayton Road
Arden, North Carolina 28704



**Free Admission
Rain or Shine**



**Indoor and Outdoor Vendors offering:
Gems, Minerals, Fossils, Artifacts, Rocks,
Meteorites, Trinitite, Silver and Gold Jewelry,
Crystals and other hobby related items.**



**Sponsored by M.A.G.M.A. and Jacquot & Son Mining
For more information on the show and vendor spaces,
Call Rick: 828-779-4501 or Email: RickJacquot@gmail.com
www.AmericanRockhound.com**

MOUNTAIN AREA GEM & MINERAL ASSOCIATION

The Columbia Gem and Mineral Society is an organization of persons associated together to promote popular interest in and to provide means for the exchange of knowledge of the Earth Sciences – Geology, Mineralogy, and Paleontology – and of the related Arts – Lapidary and other. The Society is a member of the Southeast Federation Mineralogical Societies Inc. and affiliates of the American Federation of Mineralogical Society Inc.

2020 OFFICERS and COMMITTEE CHAIRPERSONS

EXECUTIVE COMMITTEE

President..... Ron Ahle
Vice President.....Tom Daniels
Treasurer.....Angela Valvasori
Secretary.....open

COMMITTEE

MembershipSheila Frame
Auctioneer.....Benira Sutphin
Club Liaison.....Jim Cobb
Faceting Guild.....Open
Facebook.....Dan Elswick
Field Trip.....Catherine Sawyer
Historian..... Gordon Murphy
Librarian.....Sheila Frame
Newsletter Editor.....Ron Ahle
Program.....Sue Shrader
Rookie RockhoundOpen
Show.....Michael Montebello
SunshineAbbie Gates
Website.....Michael Montebello
Workshop.....Gary Hert

Columbia Gem and Mineral Society



MEMBERSHIP FORM

Year _____

(Membership Year runs January 1 – December 31)

<https://www.cgms.rocks>

Check one: DUES CURRENT MEMBERS

Individual \$25/2 _____
Family \$30/2 _____

DUES for NEW MEMBERS ONLY (Prorated Quarterly)

Individual	\$26 _____	\$21 _____	\$14 _____	\$7 _____
Family	\$31 _____	\$24 _____	\$16 _____	\$8 _____
	Jan 1	Apr 1	July 1	Oct 1

Name: _____ Birth Date: _____
Address: _____
City _____ State _____ Zip: _____
Home Phone: _____
Cell Phone(s): _____
Email Address: _____

For those with privacy concerns: If you don't want your home phone or physical address published in the Club Roster please circle or highlight: No phone No address

FAMILY MEMBERSHIP: Spouse and children under 18 yrs. living at the same address.

Spouse: _____	Birth Date: _____
Child: _____	Birth Date: _____
Child: _____	Birth Date: _____
Child: _____	Birth Date: _____
Child: _____	Birth Date: _____

CLUB PARTICIPATION: Please indicate which committee you can help with:

Field Trips__ Membership__ Newsletter__ Programs__ Social__ Faceting Guild__
Workshop__ Show Chairman__ Publicity__ Sunshine__ Rookie Rockhound' s__

May we call on you to work with a Board Member on a committee or project? _____

Make checks payable to: Columbia Gem & Mineral Society (and) mail to: PO Box 6333
Columbia, SC 29260

Previous Membership in another Mineral Society? Club _____
Have you held an office in another club? Club/Office _____
Do you have a rock collection? If so; what? _____
What lapidary skills and interests do you have? _____

For Club Use

Amount Pd _____	Chk# _____	Cash _____	Officer _____	Date _____
Amount Pd _____	Chk# _____	Cash _____	Officer _____	Date _____
Amount Pd _____	Chk# _____	Cash _____	Officer _____	Date _____
Amount Pd _____	Chk# _____	Cash _____	Officer _____	Date _____
Amount Pd _____	Chk# _____	Cash _____	Officer _____	Date _____



CGMS Website

Please visit our Website:

<http://www.cgms.rocks>

Webmaster: Steve Coker

Monthly Meeting

Starting in 2022, Except for January, the meetings are held the third Monday of each month. Socializing and refreshments at 7:00 pm; Meeting at 7:30 pm.

Executive Board Meetings:

Except for January, the meetings are held on the fourth Monday of each month. Meeting is at 7:00 pm.

Rocky Trails
PO Box 6333
Columbia, SC 29260